



:: workware™
workware connect | user guide

HAWORTH®

workware configuration icons



cable sharing – configuration



cable sharing with touch control – configuration







wireless sharing – configuration



wireless sharing with cable backup – configuration



workware configurations

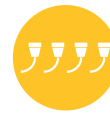
- configurations overview. 6
-  cable sharing 7
-  cable sharing with touch control 8
-  wireless sharing. 10
-  wireless sharing with cable backup 12

cable sharing details

- touch control – button operation | 2 video cables + single monitor 16
- touch control – button operation | 2 video cables + dual monitors. 17
- touch control – button operation | 4 video cables + single monitor 18
- touch control – button operation | 4 video cables + dual monitors. 19
- connecting devices to workware cables. 20
- connecting devices to workware cables using adapters. 21

wireless sharing details

- installation using the internal web page 24
- installation using the USB drive flash drive 25
- running software for temporary users 26
- how to login to a workware wireless session 27
- joining a wireless meeting that has already started 28
- wireless control screen – presentation mode 29
- wireless control screen – quad view 30
- wireless control screen – streaming mode 31
- how to logout of a wireless session. 32



:: workware

workware connect user guide | workware configurations

HAWORTH®



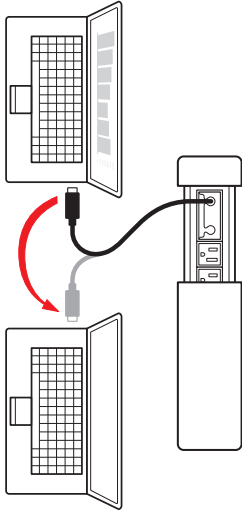
workware | configurations overview



cable sharing

Video Connection Method:
• Single video cable connected directly to monitor.

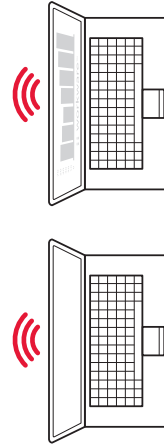
Video Sharing Method:
• Switch between users by disconnecting the video cable from first user and connecting to a second user.



wireless sharing

Video Connection Method:
• Wireless wi-fi

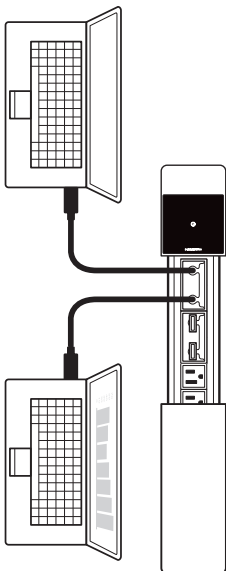
Video Sharing Method:
• Switch between wireless presenters using workware's wireless presentation software.



cable sharing with touch control

Video Connection Method:
• Video cables (up to 4)

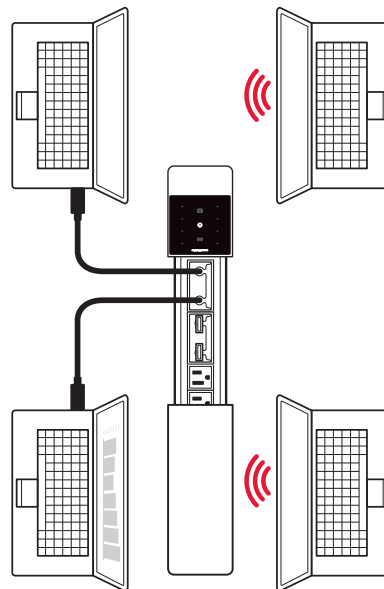
Video Sharing Method:
• Switch between cabled presenters using the buttons on touch control panel.



wireless sharing with cable backup

Video Connection Method:
• Wireless wi-fi or using video cables (up to 4).

Video Sharing Method:
• Switch between wireless presenters using workware's wireless presentation software.
• Switch between cabled presenters using the buttons on the touch control panel.





cable sharing

1 power on

To turn on the external monitor:

- 1a. Activate on the monitor's power button on the remote control or directly on the monitor.

2 connect

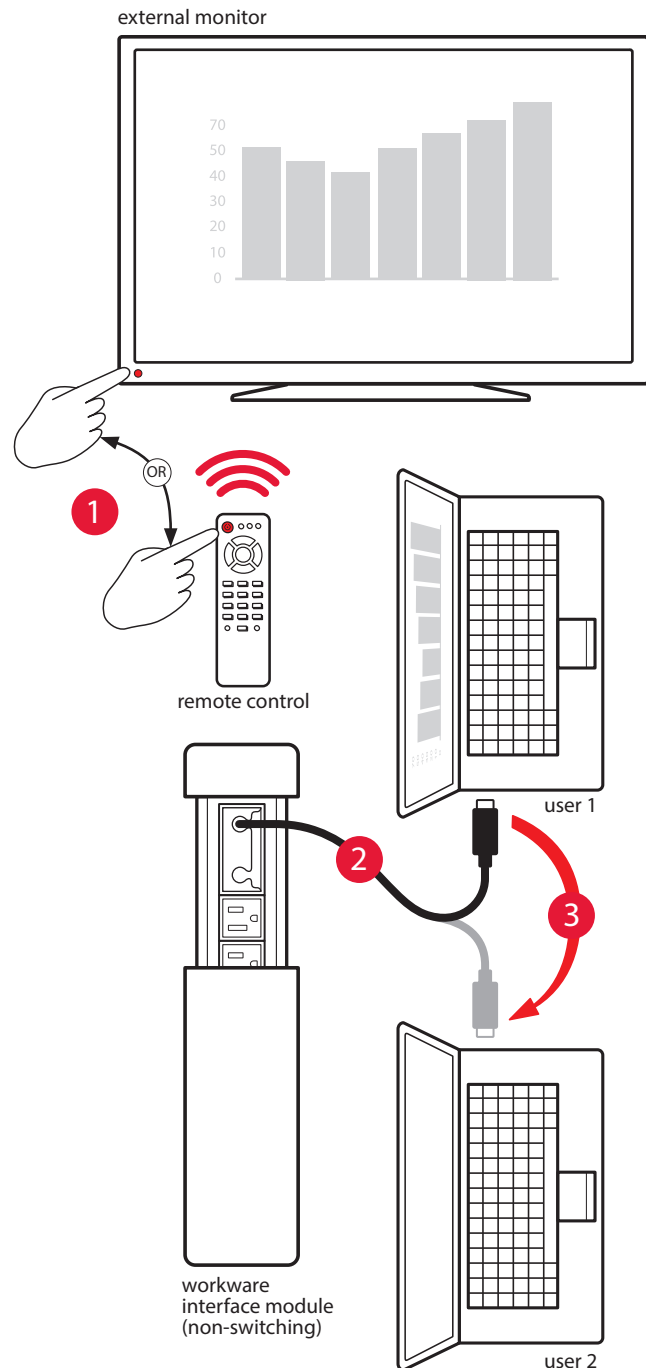
To connect your device to workware:

- 2a. Slide open the door on the interface module.
- 2b. Pull out the video cable.
- 2c. Connect video cable to computer.
- 2d. The computer screen will display on the external monitor.

3 share

To share a different users computer screen:

- 3a. Disconnect the video cable from the first user's device .
- 3b. Connect the video cable to a second user's device.








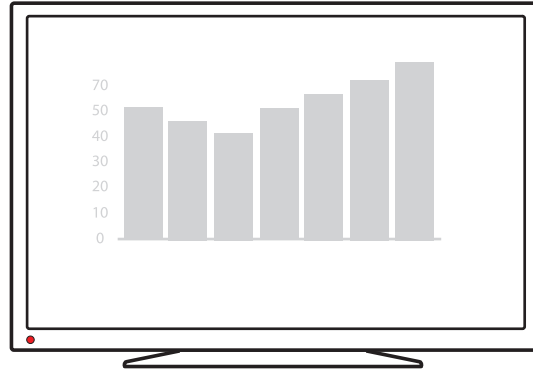
cable sharing with touch control

1 power on

To turn on workware and the external monitor:

- 1a. Press the power button  on the touch control (see page 7).
- 1b. The power button  will blink while the system warms up, after a few seconds workware and the external monitor will power on. Once power button  is activated it will become fully illuminated (see page 7).

external monitor



2 connect

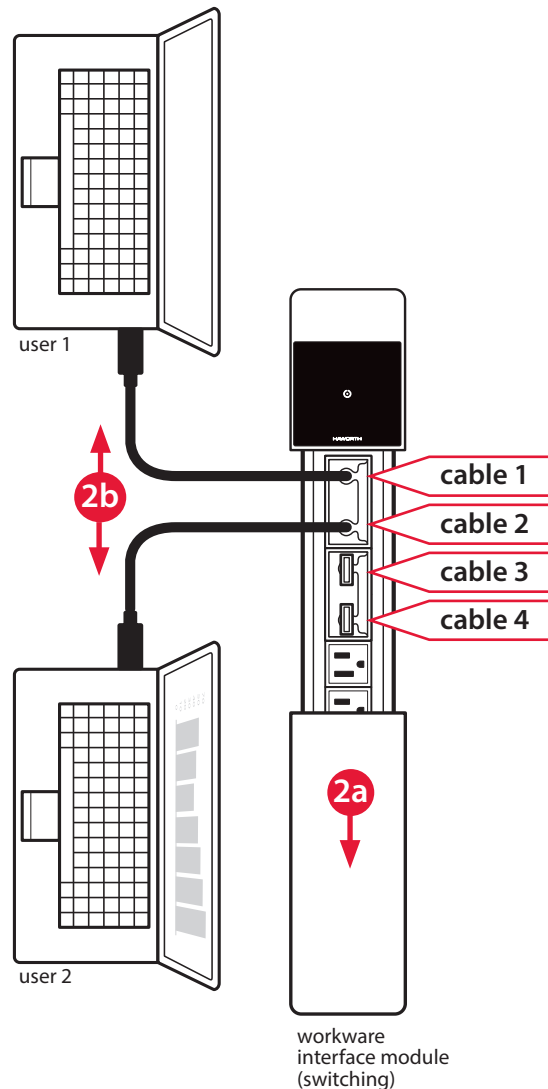
To connect your device to workware:

- 2a. Slide open the door on the interface module.
- 2b. Pull out a video cable and connect it to your device.
- 2c. workware will detect the device and display a dimly lit dot on the left side of the touch control. The dimly lit button signals the device is connected and is standing by to present (see page 7).
- 2d. As you attach the video cables to your device, identify which dot lights up on the touch control. This dot will be used to control the presentation of your device on the monitor (see page 7).

3 share

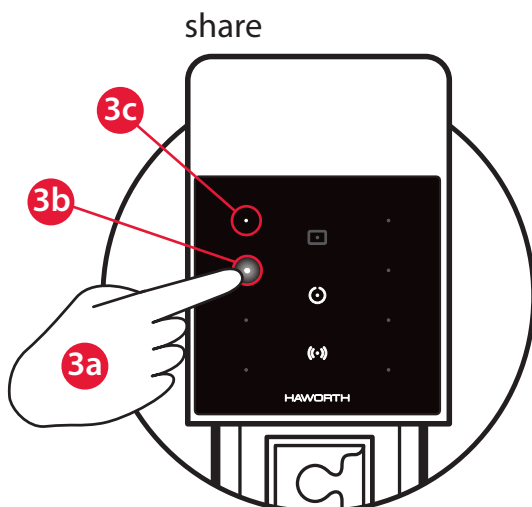
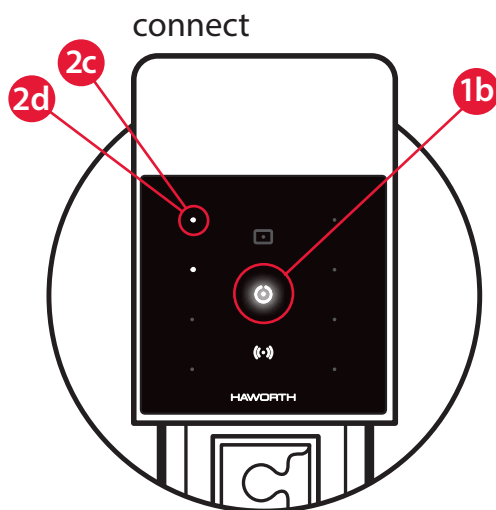
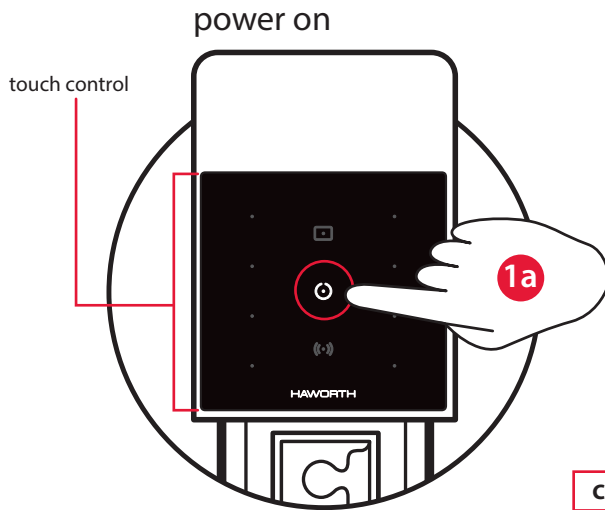
To share your screen on the external monitor:

- 3a. To present your screen on the external monitor press the dot associated with your device. This will make you the active presenter (see page 7).
- 3b. After activating the dot, it will glow brightly to indicate this user is the active presenter (see page 7).
- 3c. Press the other users' dots to share content from another user (see page 7).



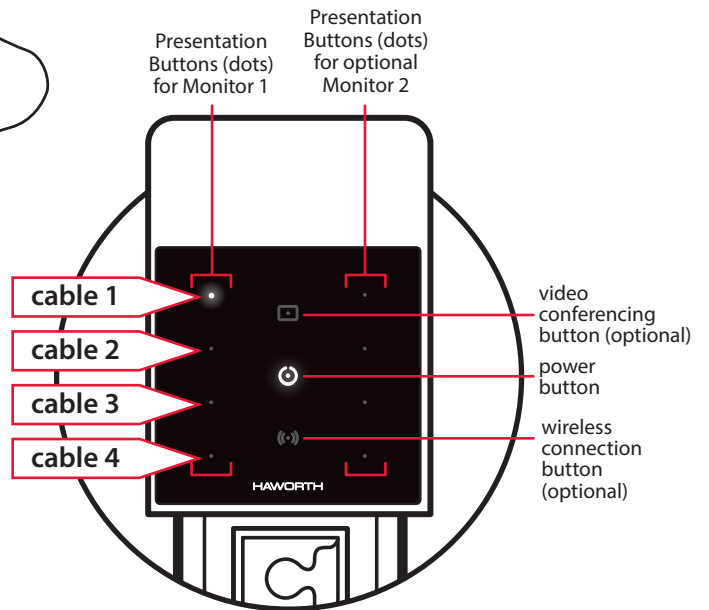


cable sharing with touch control (continued)

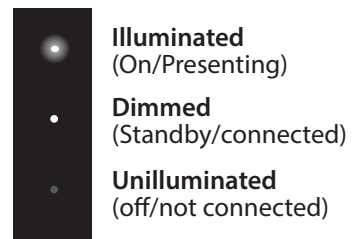


Touch Control Overview

See "Touch Control – Button Operation" Pages for detailed explanation of how buttons function.



Touch Control – Illumination Levels





wireless sharing

1 power on

To turn on the external monitor:

- 1a. Activate on the monitor's power button on the remote control or directly on the monitor.

2 connect

To wirelessly connect your device to workware (see page 9):

- 2a. Start workware software on your device.
- 2b. Click "OK" to change screen resolution.
- 2c. Click the "Connect" button in the Connect to an Access Point dialog box.
- 2d. Click on "+" at Device Name dialog box
- 2e. Enter the Server IP Number (at the bottom of screen) and Login Code (at the top of screen) displayed on the external monitor and click "OK".
- 2f. Click "OK" at the Device Name dialog box.
- 2g. workware wireless control screen will open.

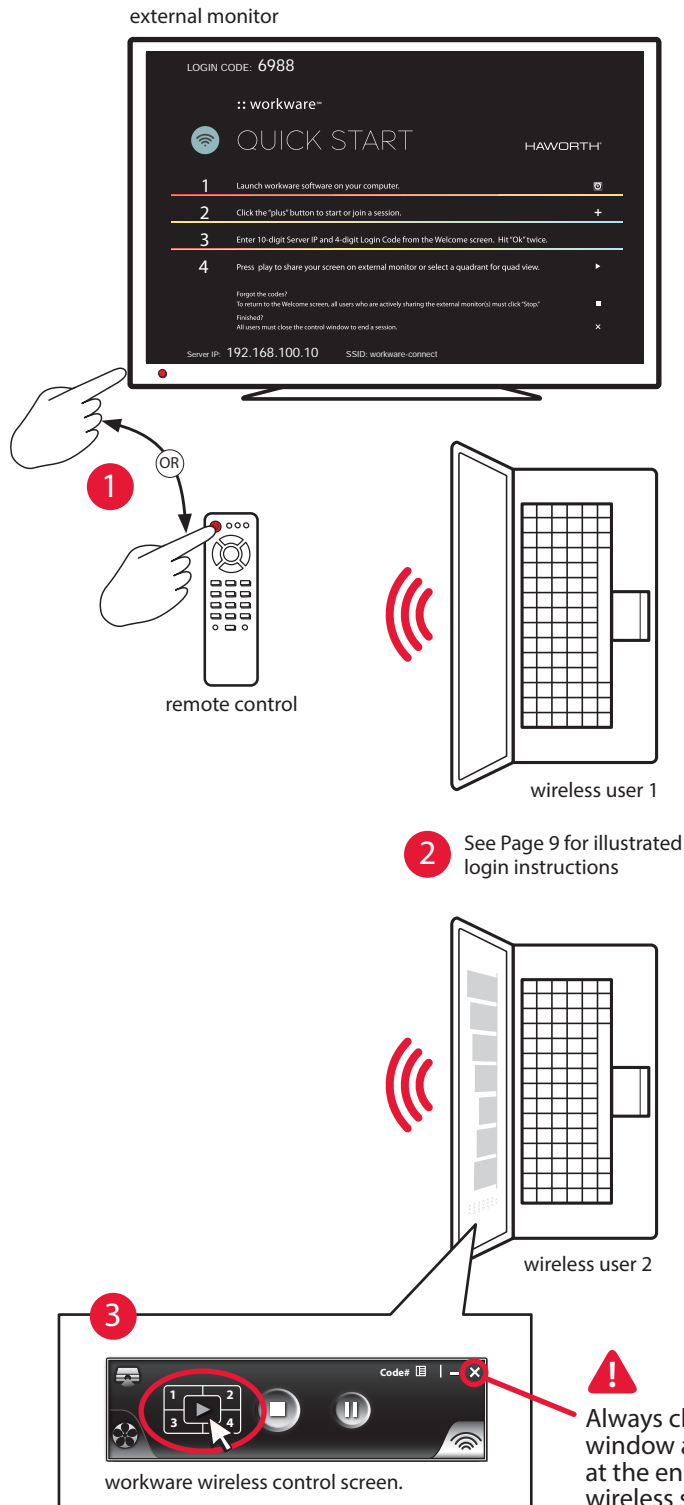
3 share

To share your device screen on the external monitor:

- 3a. Press the "play" button (▶) on the workware wireless control screen and your computer screen will display on the external monitor.

IMPORTANT

Once the wireless session is over, all users must log out by clicking the "X" in the upper right corner of the workware wireless control screen. New session can not start until everyone is logged out of the previous session.

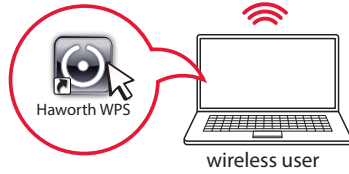




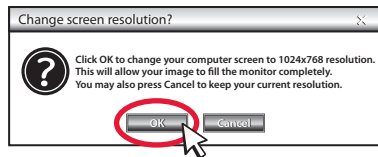
wireless sharing (continued)

connect – wireless presentation software – login process

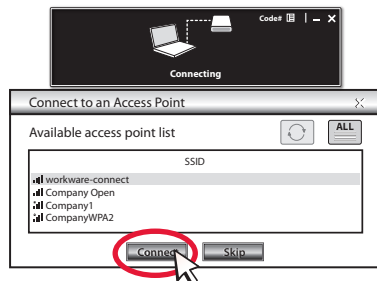
2a Start "Haworth WPS"



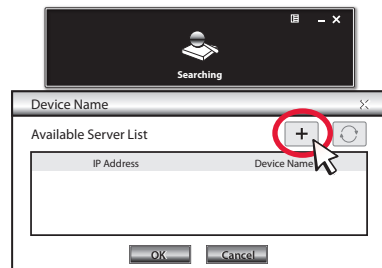
2b Change Resolution – Click "OK"



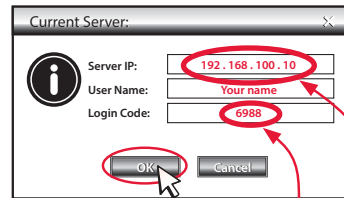
2c Connect To Access Point – Click "Connect"



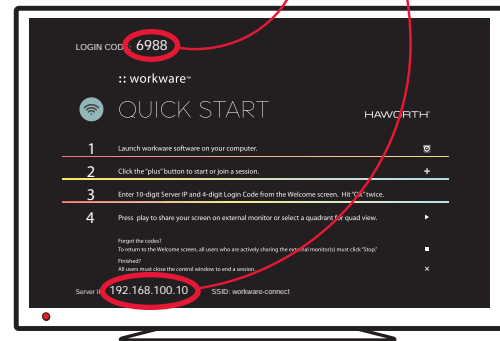
2d Add Device Name – Click "+"



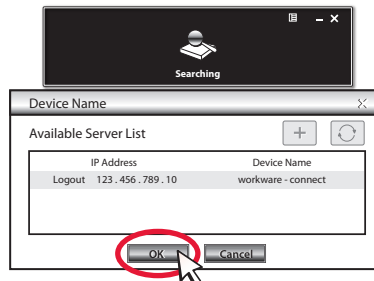
2e Enter server IP and Login code – Click "OK"



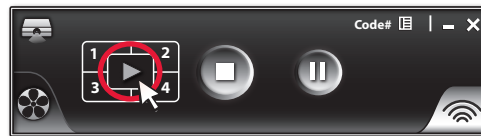
external monitor



2f Complete Login – Click "OK"



2g Start Presentation – Click "Play" (>)



workware wireless control screen.



wireless sharing with cable back up

1 power on

To turn on workware and the external monitor:

- 1a. Press the power button on the touch control (see page 11).
- 1b. The power button will blink while the system warms up, after a few seconds workware and the external monitor will power on. Once power button is activated it will become fully illuminated (see page 11).

2 connect

To connect your device using cables:

- 2a. Slide open the interface module door.
- 2b. Pull out a video cable and connect it to your computer.
- 2d. workware will detect a device and display two glowing dots on the touch control (see page 11).
- 2e. Identify which two dots (left and right) are associated with your computer (see page 11).

To connect your device using wireless (see page 11):

- 2f. Press the wireless button on the touch control screen to switch to wireless mode.
- 2g. Start workware software.
- 2h. Change screen resolution.
- 2i. Click on "Connect" in the Connect to an Access Point dialog box.
- 2j. Click on "+" at Device Name dialog box
- 2k. Enter Server IP Numbers and Login Code listed on the external monitor and click "OK".
- 2l. Click "OK" at the Device Name dialog box.
- 2m. workware wireless control screen opens.

3 share

To share your computer screen on the external monitor:

cable sharing users:

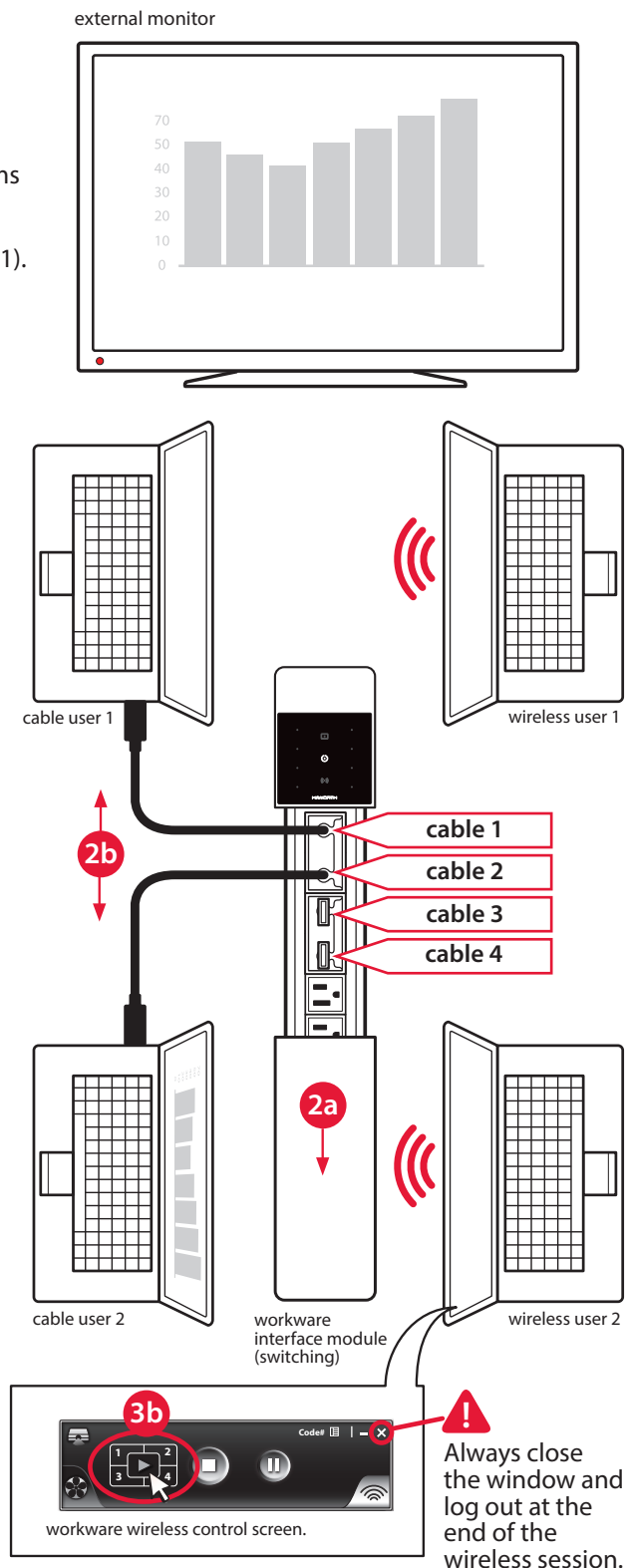
- 3a. Press one of the dimmed dots associated with your device to share your screen on the external monitor (see page 11).
- 3b. Once one of the user's dots have been activated it will begin to glow brightly and the external monitor will display the users content (see page 11).
- 3c. Press the other users' dots to share content from another user (see page 11).

wireless sharing users:

- 3d. Press the "play" button on the workware wireless control screen and your computer screen will display on the external monitor.

IMPORTANT

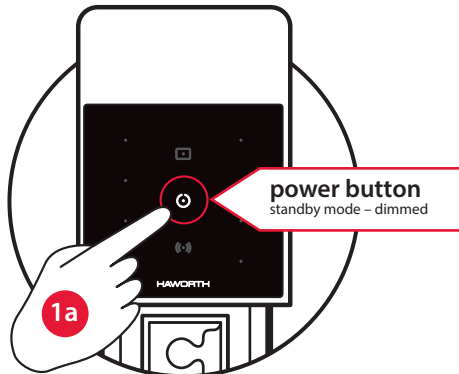
Once the wireless session is over, all users must log out by clicking the "X" in the upper right corner of the workware wireless control screen. New session can not start until everyone is logged out of the previous session.



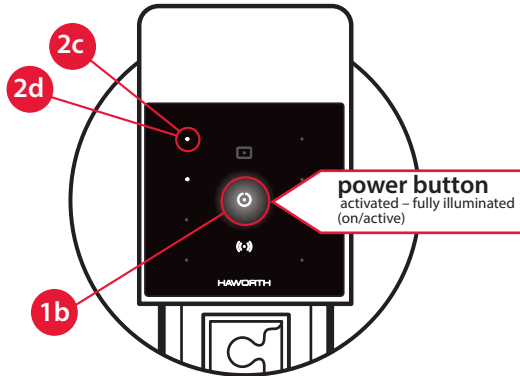


wireless sharing with cable back up (continued)

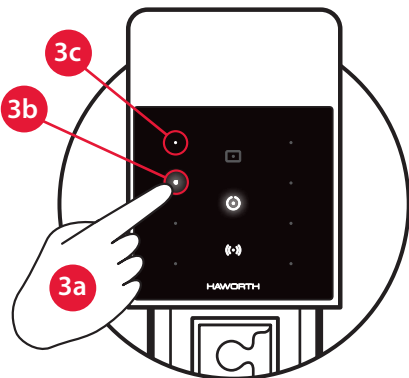
power on



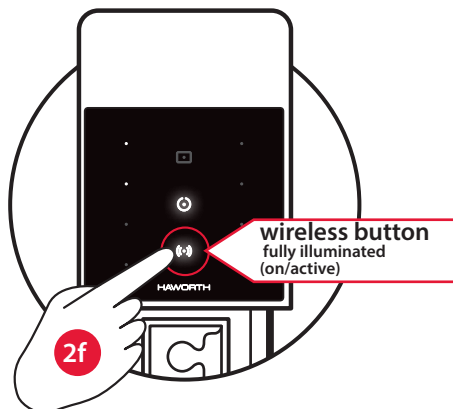
connect



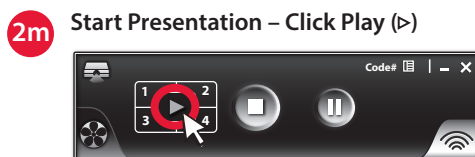
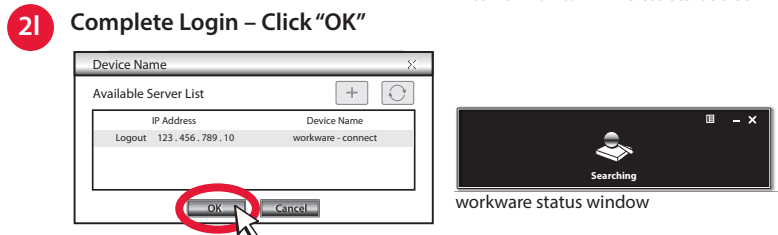
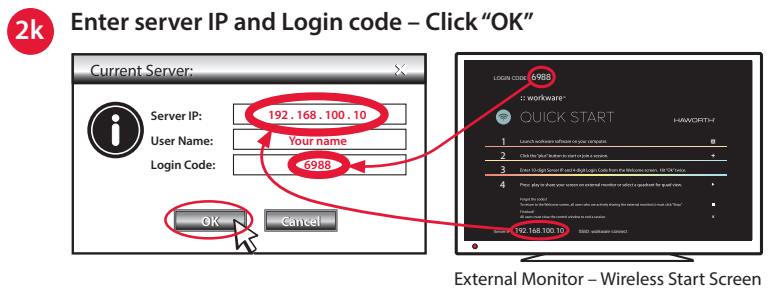
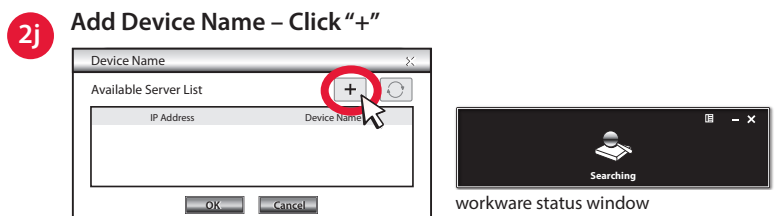
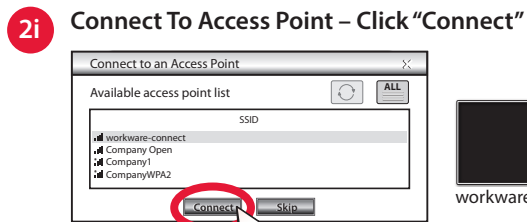
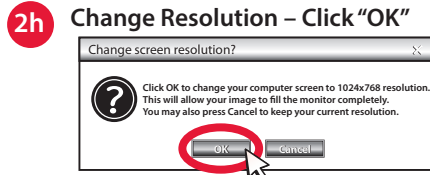
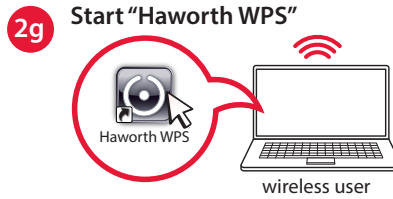
share - cables



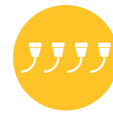
share - wireless



connect - wireless presentation software - login process







:: workware

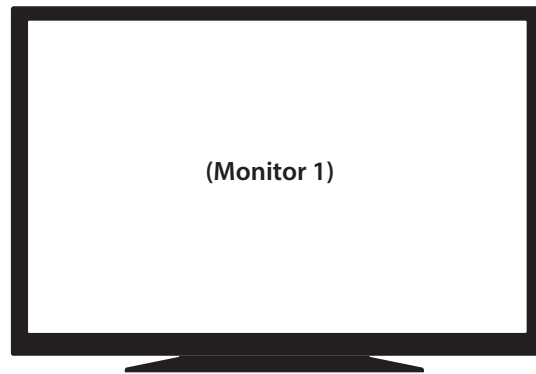
workware connect user guide | cable sharing details

HAWORTH®

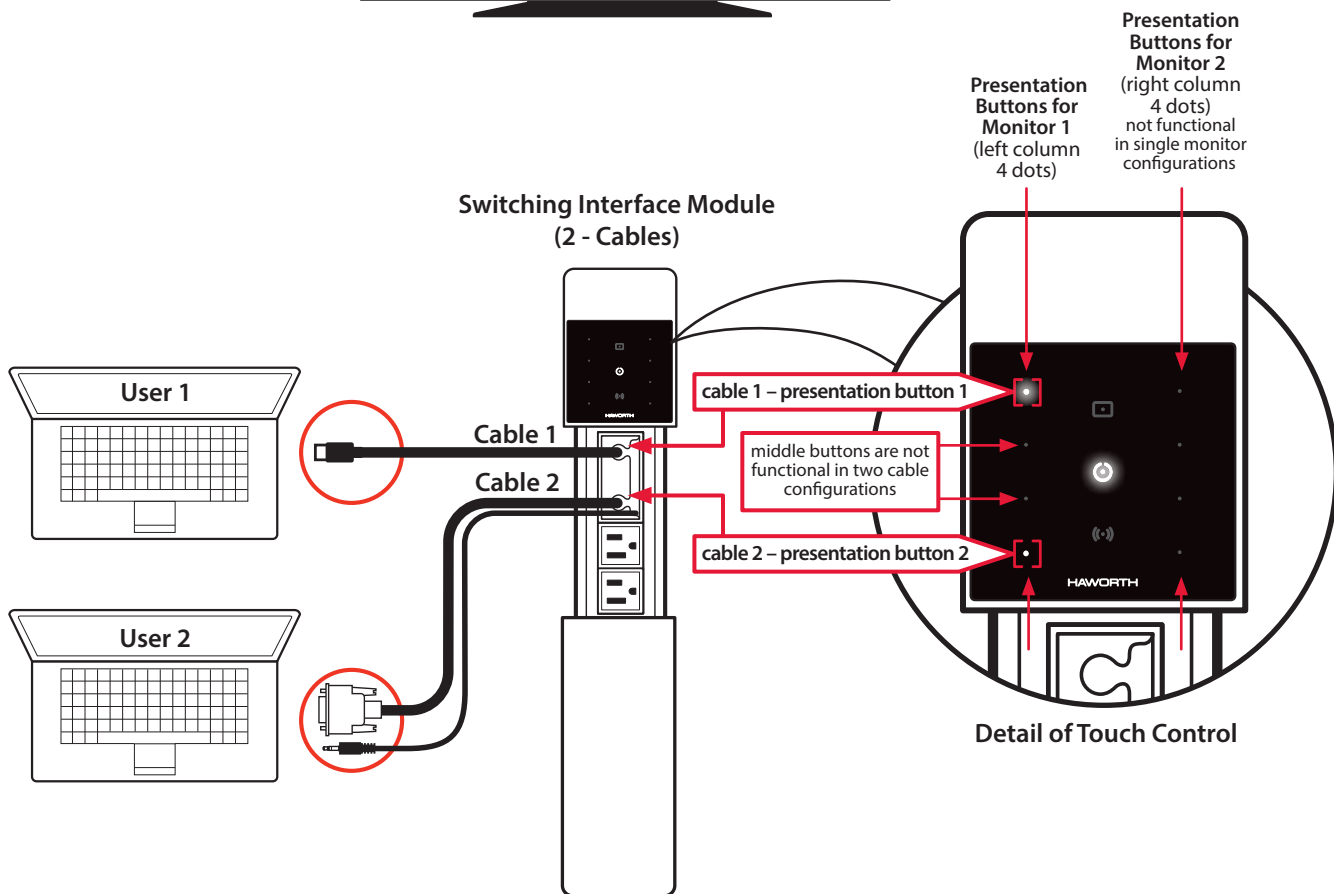


touch control – button operation | 2 video cables + single monitor

Single Monitor



(Monitor 1)



Presentation Buttons for Monitor 2 (right column 4 dots) not functional in single monitor configurations

Presentation Buttons for Monitor 1 (left column 4 dots)

Switching Interface Module (2 - Cables)

User 1

User 2

Cable 1
Cable 2

cable 1 – presentation button 1

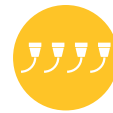
middle buttons are not functional in two cable configurations

cable 2 – presentation button 2

Detail of Touch Control

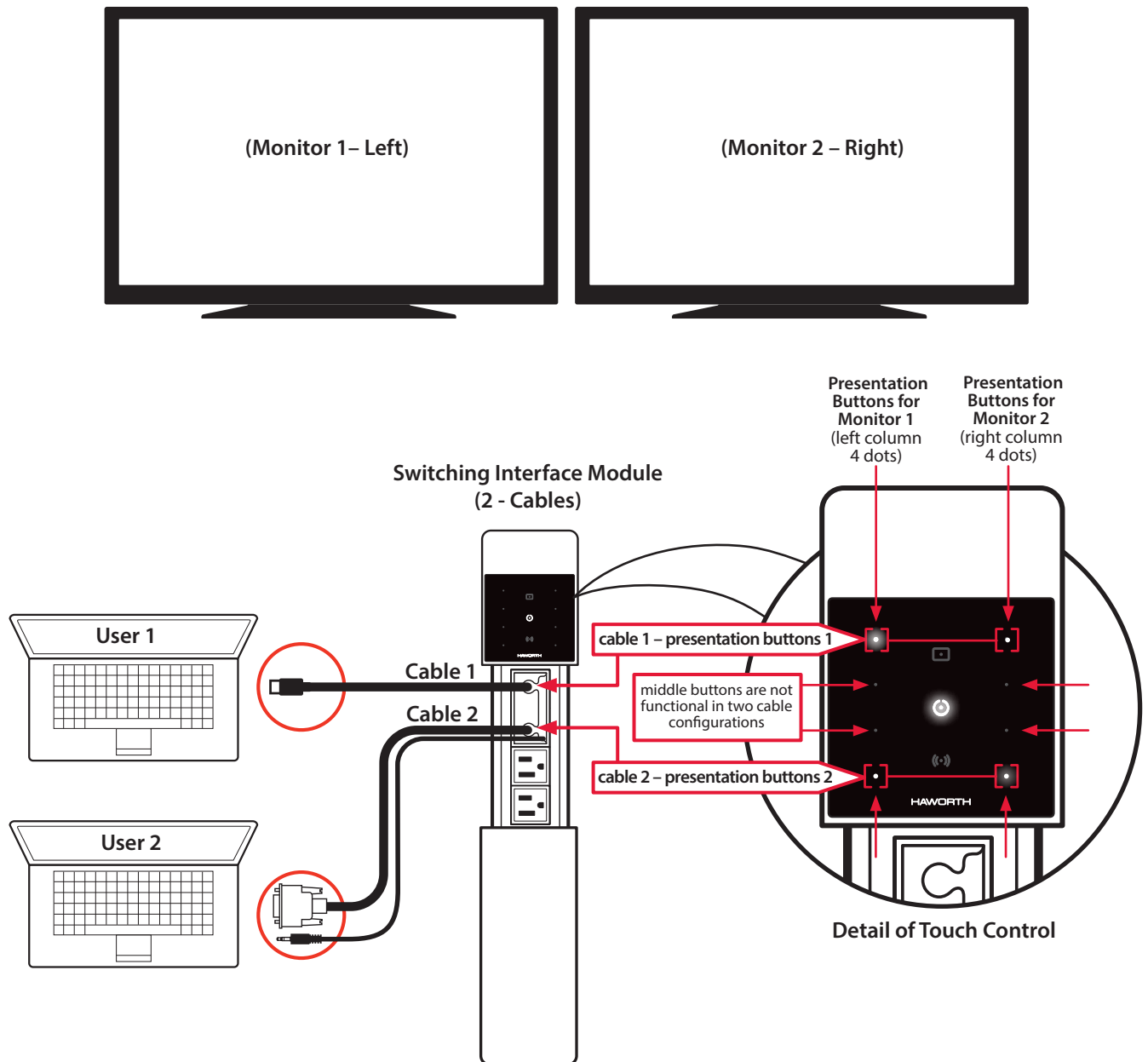
button operation:

- The left column of presentation buttons (four small dots on the Touch Control) controls presentations for monitor 1.
- The top presentation button in the left column controls cable 1 and the bottom presentation button controls cable 2 (the middle two buttons are not functional in two cable configurations).
- Presentation buttons are off when video cables are not attached to a device, the buttons will be dimmed when video cables are connected to a device and the buttons will be illuminated when buttons are they activated.
- Users can display the screen of their device on monitor 1 by pressing the presentation button in the left column that is associated with the cable they are using. The button will become fully illuminated after being pressed and the user will become the active presenter.



touch control – button operation | 2 video cables + dual monitors

Dual Monitors



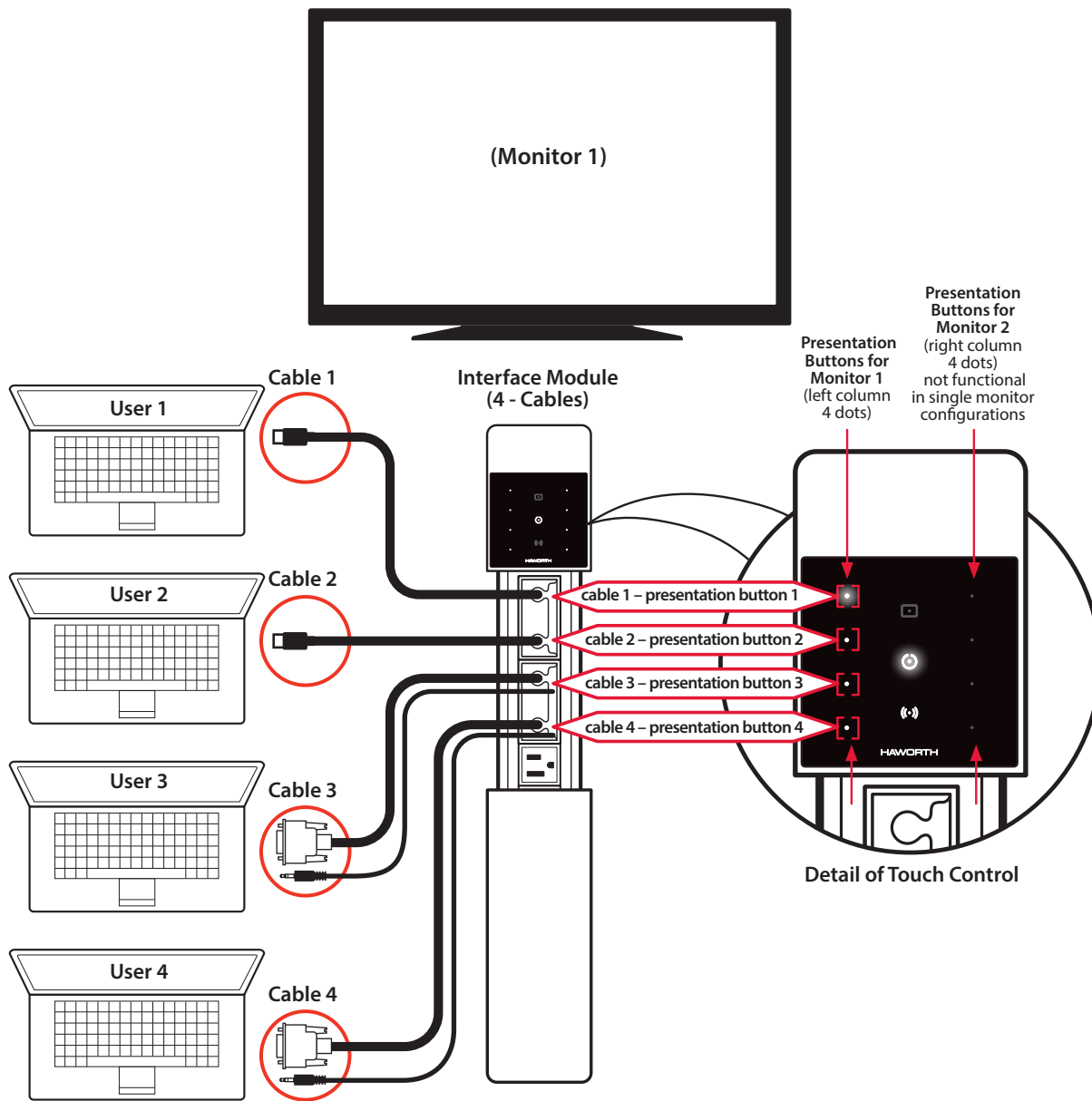
button operation:

- The left column of presentation buttons (four small dots on the Touch Control) controls presentations for monitor 1 and the right column of presentation buttons controls presentations for monitor 2.
- The top presentation button in the right and left column controls cable 1 and the bottom presentation button controls cable 2 (the middle two buttons are not functional in two cable configurations).
- Presentation buttons will be off when video cables are not attached to a device, the buttons will be dimmed when video cables are connected to a device and the buttons will be illuminated when buttons are activated.
- Users can display the screen of their device by pressing the presentation button that is associated with the cable they are using. Press the presentation button in the left column to present on monitor 1 or the right column for monitor 2. The buttons will become fully illuminated after being pressed and the user will become the active presenter.



touch control – button operation | 4 video cables + single monitor

Single Monitor



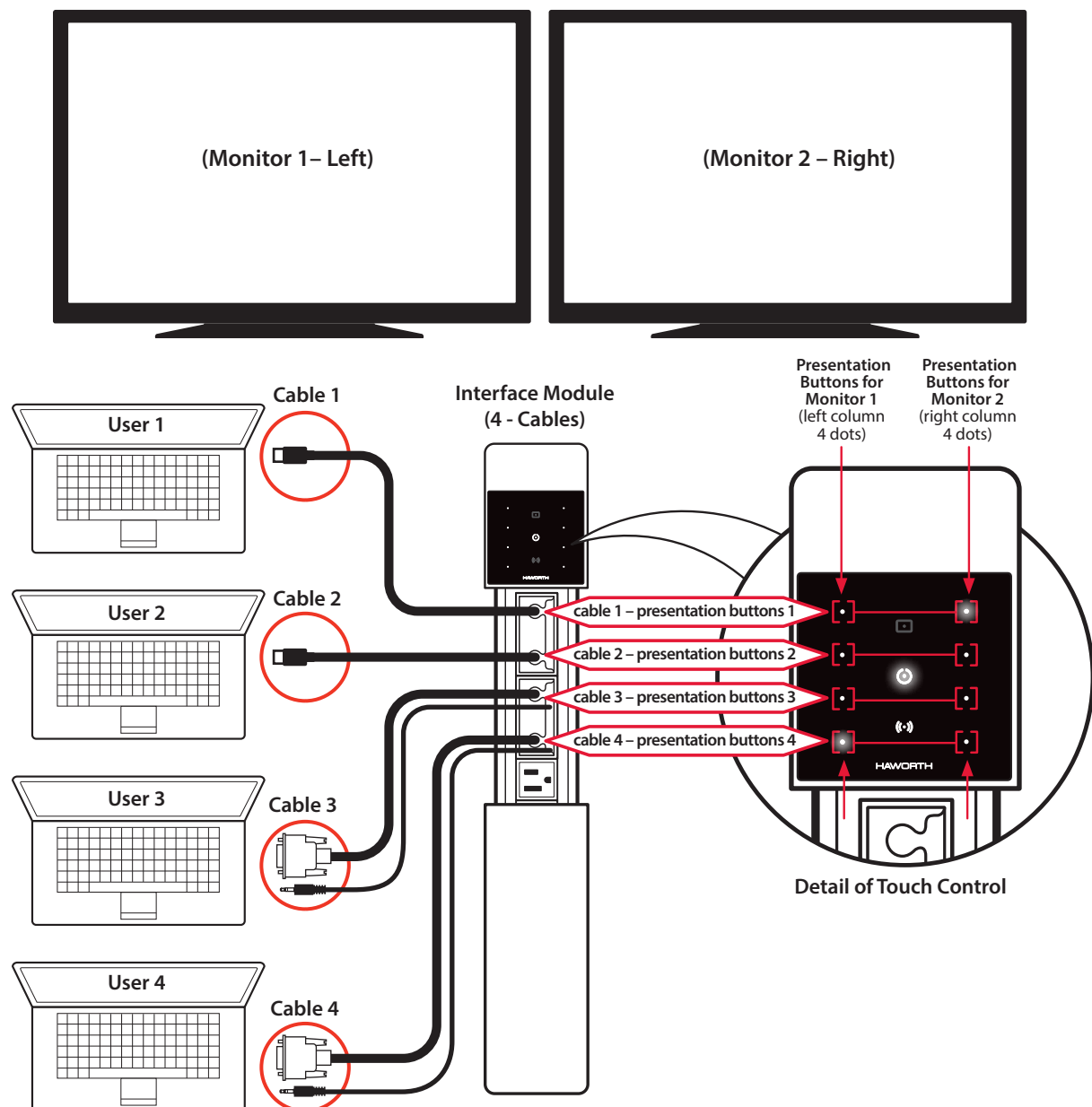
button operation:

- The left column of presentation buttons (four small dots on the Touch Control) controls presentations for monitor 1.
- Each of the four presentation buttons represents one of the 4 video cables (top to bottom order - Cable 1 at the top through Cable 4 at the bottom).
- Presentation buttons will be off when video cables are not attached to a device, the buttons will be dimmed when video cables are connected to a device and the buttons will be illuminated when buttons are activated.
- Users can display the screen of their device on monitor 1 by pressing the presentation button associated with their device, this will fully illuminate the button and the user will become the active presenter.



touch control – button operation | 4 video cables + dual monitors

Dual Monitors



button operation:

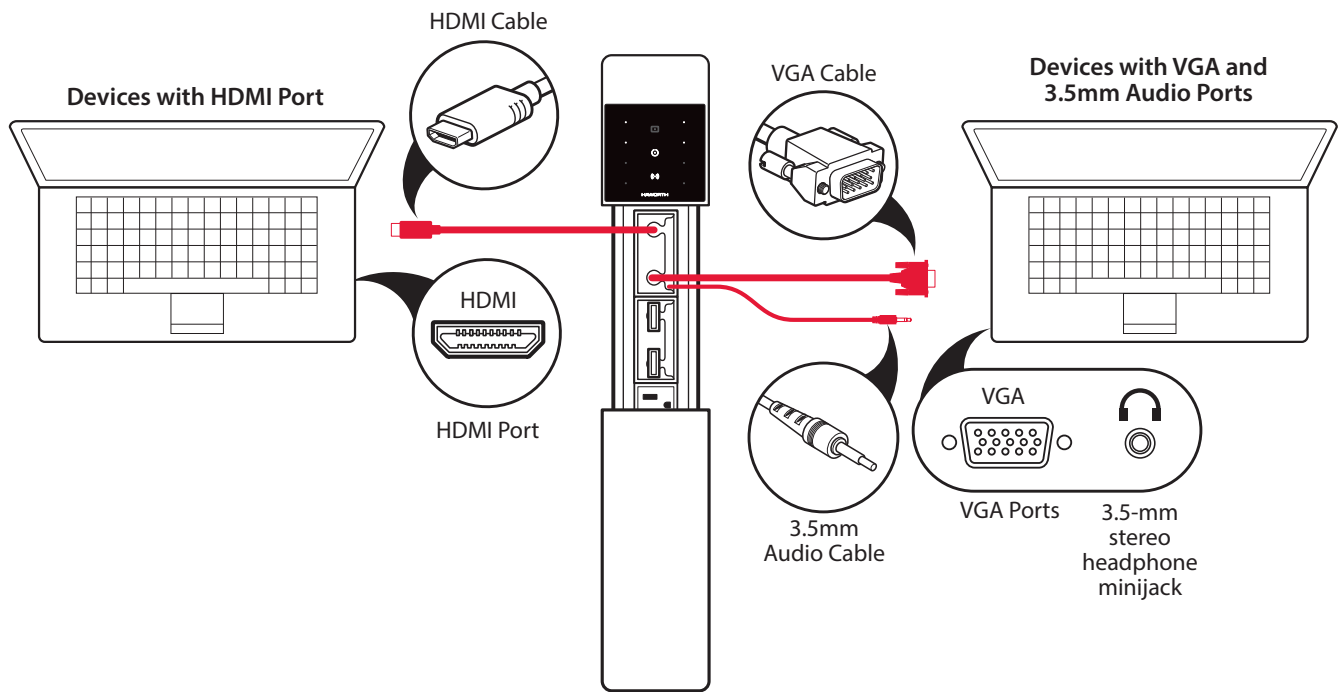
- The left column of presentation buttons (four small dots on the Touch Control) controls presentations for monitor 1 and the right column of presentation buttons controls presentations for monitor 2.
- Each of the four presentation buttons represents one of the 4 video cables (top to bottom order - Cable 1 at the top through Cable 4 at the bottom).
- Presentation buttons will be off when video cables are not attached to a device, the buttons will be dimmed when video cables are connected to a device and the buttons will be illuminated when buttons are activated.
- Users can display the screen of their device on monitor 1 by pressing the presentation button associated with their device in the left column of dots or they can display on monitor 2 by pressing their presentation button associated in the right column of dots, this will fully illuminate the presentation buttons and the user will become the active presenter.



cable sharing | connecting your device to workware using video cables

workware cables can connect to devices with these types of audio/video ports:

1. HDMI Port (carries digital audio and video signals).
2. VGA Port (carries analog video signals).
3. 3.5mm Audio Connections (carries analog audio signals sometimes marked as the headphone port).

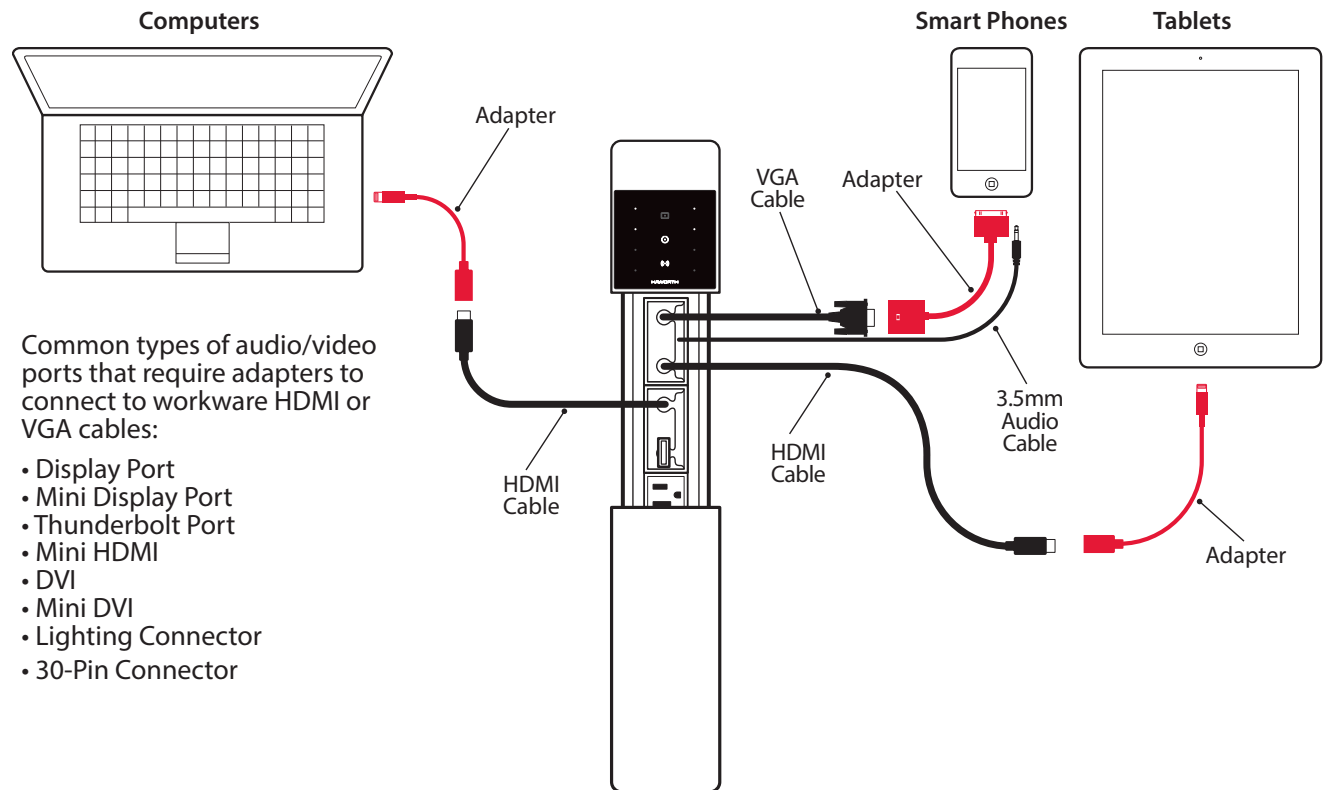




cable sharing | connecting your device to workware using video cables with adapters

Users must provide adapters for devices that don't have HDMI or VGA audio/video connections.

- workware can only directly connect to devices with HDMI ports or VGA ports / 3.5mm audio ports.
- Devices using alternate types of ports may be able to connect to workware with the use of an adapter.





:: workware

workware connect user guide | wireless sharing details

HAWORTH®

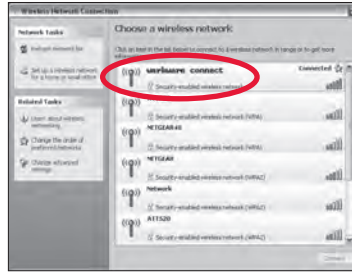


wireless presentation software | installation using workware's internal web page

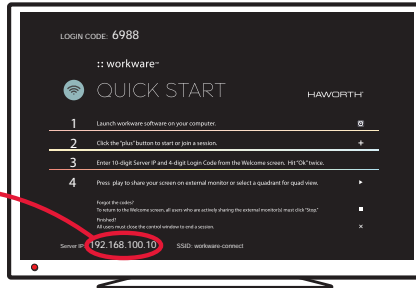
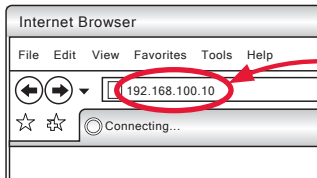
If your device is capable of displaying content wirelessly, you will need to install workware's wireless presentation software. The Wireless Presentation Software can be pushed out from your company's Information Technology Department, downloaded directly from workware's internal web page or installed using workware's USB flash drive included with the Wireless Module. Users must have administration rights to install the software on most devices.

Installing Wireless Presentation Software – From workware's Internal Web Page

- 1 To access the workware internal web page, connect to the wireless network that the workware unit has been assigned . (Either your company's own infrastructure or workware's built in wireless networking).



- 2 Open a web browser and type in the IP address of the workware unit as displayed on the external monitor.

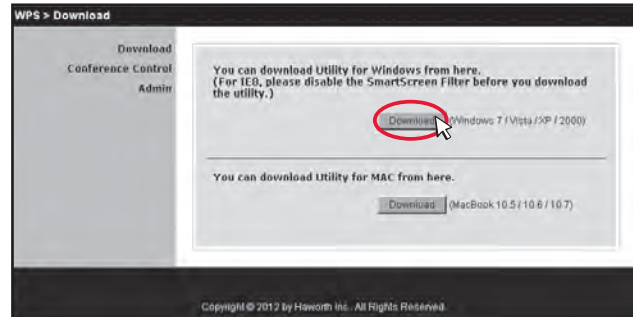


External Monitor – Workware Wireless Start Screen

- 3 Click "Download" from the menu, select "download" for the appropriate operating system and install the software.



workware internal website



workware internal website – download page

- 4 After the WPS software installs on your device, a Haworth WPS shortcut will appear on your desktop. Activate this shortcut to start the wireless presentation software (WPS).



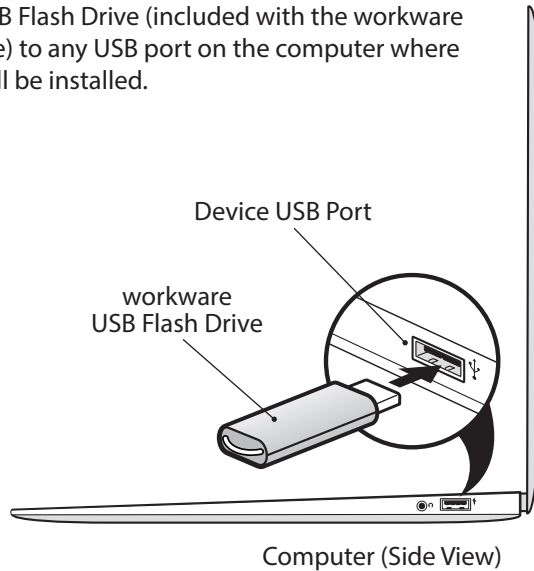


wireless presentation software | installing software using the USB drive flash drive

If your system has the option to display content wirelessly, you will need to install workware's Wireless Presentation Software. The Wireless Presentation Software can be pushed from IT, downloaded directly from workware's internal web page or installed via the USB flash drive included with the Wireless Module.

Installing workware's Wireless Presentation Software – From the USB flash drive

- 1 Connect the USB Flash Drive (included with the workware wireless module) to any USB port on the computer where the software will be installed.



The USB flash drive Contains the following software:

Client Folder:

- workware software for Windows® and Mac® OS

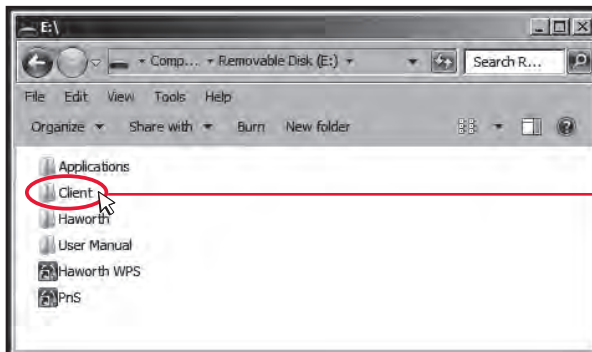
Applications Folder:

- VAC (for audio projection)
- VDD (for virtual extended screens)
- IB Maker (for changing startup screen)
- SNMP Manager (for workware connect wireless module management)

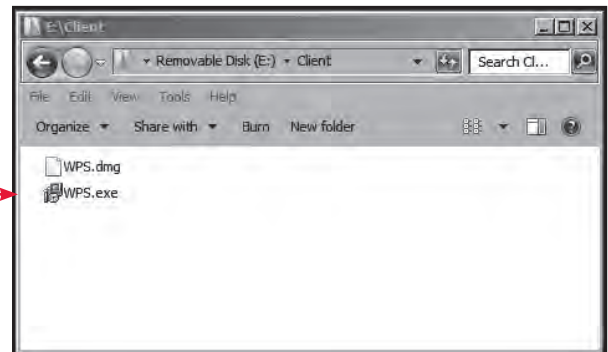
Currently Supported Operating Systems:

- Windows 2000 (video only)
- Windows XP (audio and video)
- Windows Vista (video only)
- Windows 7 (audio and video)
- Mac OS X 10.5 and later (video only)
- Windows 8 – in development

- 2 Navigate to the Client folder located on the USB flash drive and install the software appropriate for your computer's operating system (WPS.exe for Windows or WPS.dmg is for Macs).



workware USB Flash Drive window



Client folder contains wireless presentation software. WPS.exe (for Windows) or WPS.dmg (for Mac)

- 3 After the WPS software installs on your device, a Haworth WPS shortcut will appear on your desktop. Activate this shortcut to start the wireless presentation software (WPS).





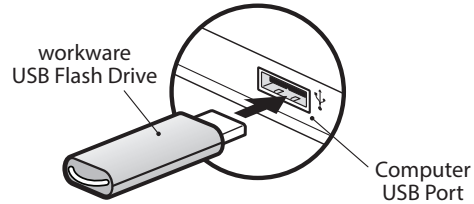
wireless presentation software | running software for temporary users

Temporary users/guests can run workware’s wireless presentation software directly from the USB flash drive without installing the software permanently on their device. USB flash drive must be connected to the device while wireless presentation software is running.

Running workware wireless presentation software directly from the USB flash drive.

1 Connect USB flash drive

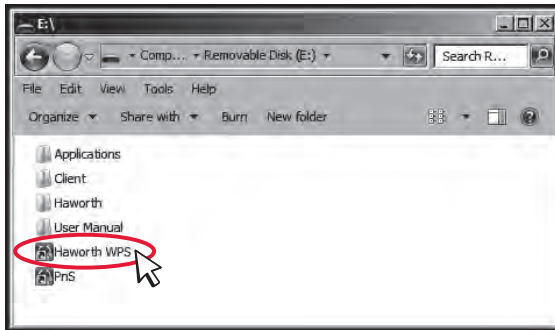
Connect the USB flash drive (included with the workware wireless module) to any USB port on the computer.



2 Access Software

Windows Users:

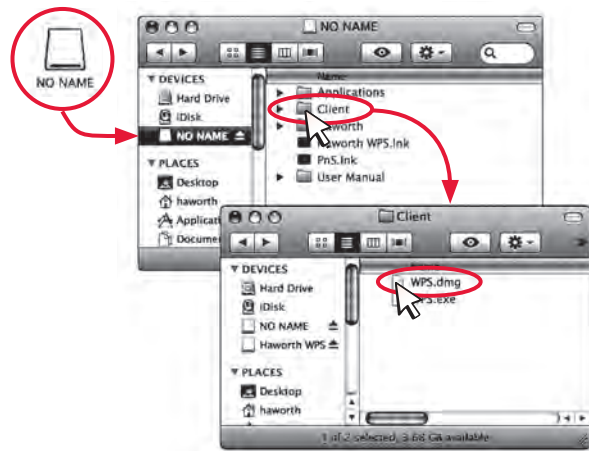
- Access the USB Flash Drive and double click on the “Haworth WPS” short cut to start the wireless presentation software.



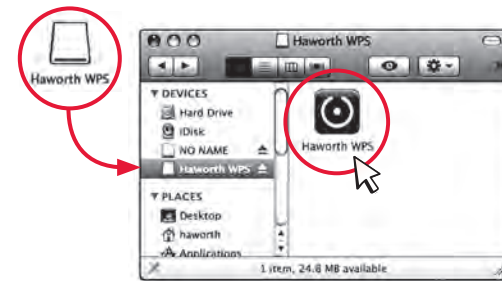
workware USB Flash Drive window

Mac Users:

- Access the USB flash drive and open the “Client” folder.
- Double click the “WPS.dmg” file to mount a disk image named “Haworth WPS” on your device.

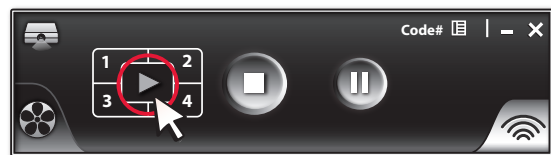


- Double Click “Haworth WPS” disk image to open it.
- Double Click the “Haworth WPS” icon inside the window, to start the wireless presentation software.



3 Login to Wireless Session

- Once the wireless presentation software starts users can login to a wireless session (See Pg 27 login instructions).
- Once the login process has been completed, users can click the play button (▶) on the wireless control screen to start a presentation.



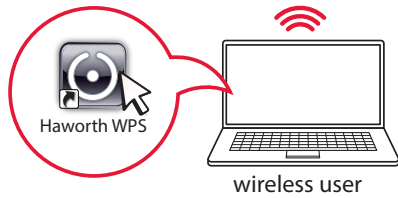
Wireless Control Screen – Presentation Mode



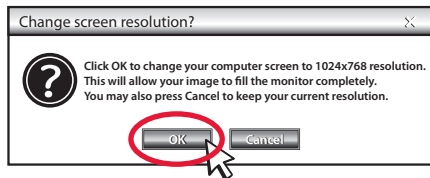
wireless presentation software | how to login to a workware wireless session

wireless presentation software – login process

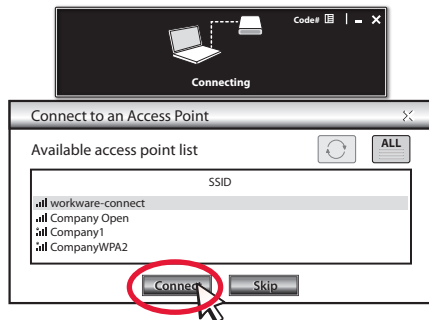
- 1 Start "Haworth WPS" (Wireless presentation software)



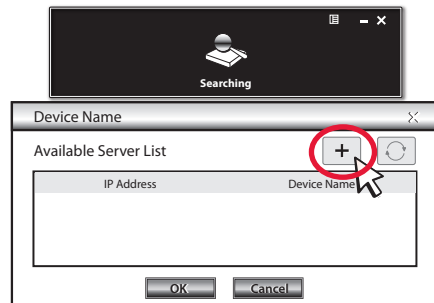
- 2 Change Resolution – Click "OK"



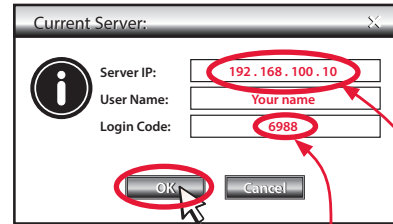
- 3 Connect To Access Point – Click "Connect"



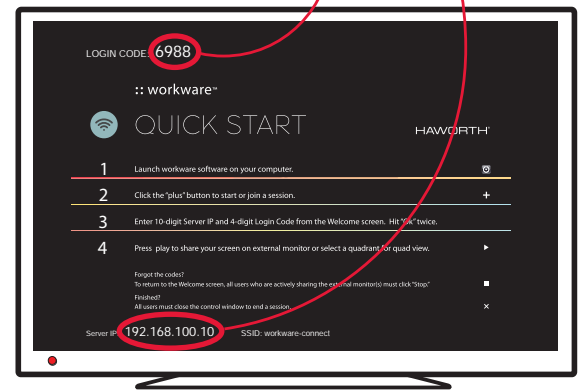
- 4 Add Device Name – Click "+"



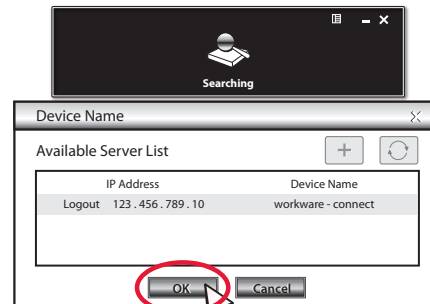
- 5 Enter server IP and Login code – Click "OK"



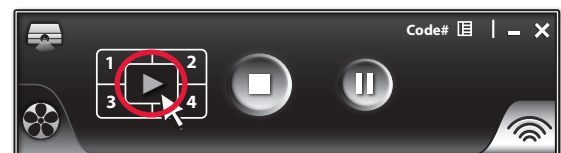
external monitor



- 6 Complete Login – Click "OK"



- 7 Start Presentation – Click Play (>)



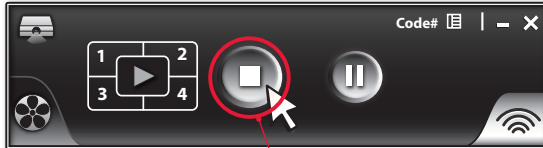


wireless presentation software | joining a wireless meeting that has already started

Once a wireless presentation has started additional users no longer have access the 4-Digit Login Code or the Server IP address listed on the welcome screen. To allow additional users to login, the active presenter(s) must stop their presentation(s) and return to the welcome screen so other users can access the login information. Once all additional users have logged in everyone can resume wireless presentations.

- 1 All wireless users must stop presenting wirelessly by pressing the STOP (□) button on the Wireless Control Screen.

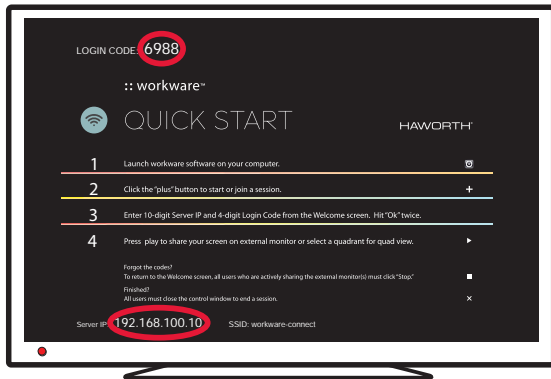
Wireless Control Screen – Presentation Mode



Stop Presentation
Stops the display of user's computer screen. External Monitor Returns to the Welcome Screen.

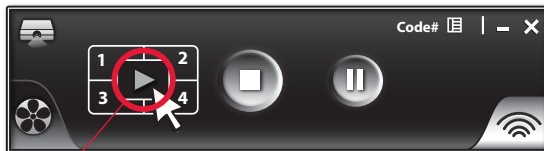
- 2 Once all the wireless presentations have been stopped the monitor will default back to welcome screen with the current login information . Additional users can now login to this meeting session with the 4-Digit Login Code and the Server IP Address.

External Monitor – Welcome Screen



- 3 Once the new users have the 4-Digit login code and the Server IP address from the Start Screen, users can resume wireless presentations again by pressing the PLAY Icon (▷).

Wireless Control Screen – Presentation Mode



Start Presentation Full Screen
Projects user's device full screen on the external monitor.



wireless presentation software | wireless control screen – presentation mode

- Once a user has logged their device into the workware wireless presentation system, they will use the wireless control screen to present content from their device on the external monitor.
- The workware wireless control screen has two modes, the Presentation Mode and Streaming Mode. Users can toggle between the two modes by pressing the projector button or the film reel button on the left side of the window.
- The Presentation Mode is the standard mode for displaying a user's screen wirelessly on an external monitor, this mode cannot smoothly stream full frame video, as it does not offer buffering. The Presentation Mode is only recommended for showing smaller videos (320x280).

Wireless Control Screen – Presentation Mode

Presentation Mode

Mode for controlling the projection of a user's device on an external monitor.

Full Screen Presentation

The inner button is used to project the user's device full screen on the external monitor.

Login Code

Displays the login code for current wireless session.

Menu

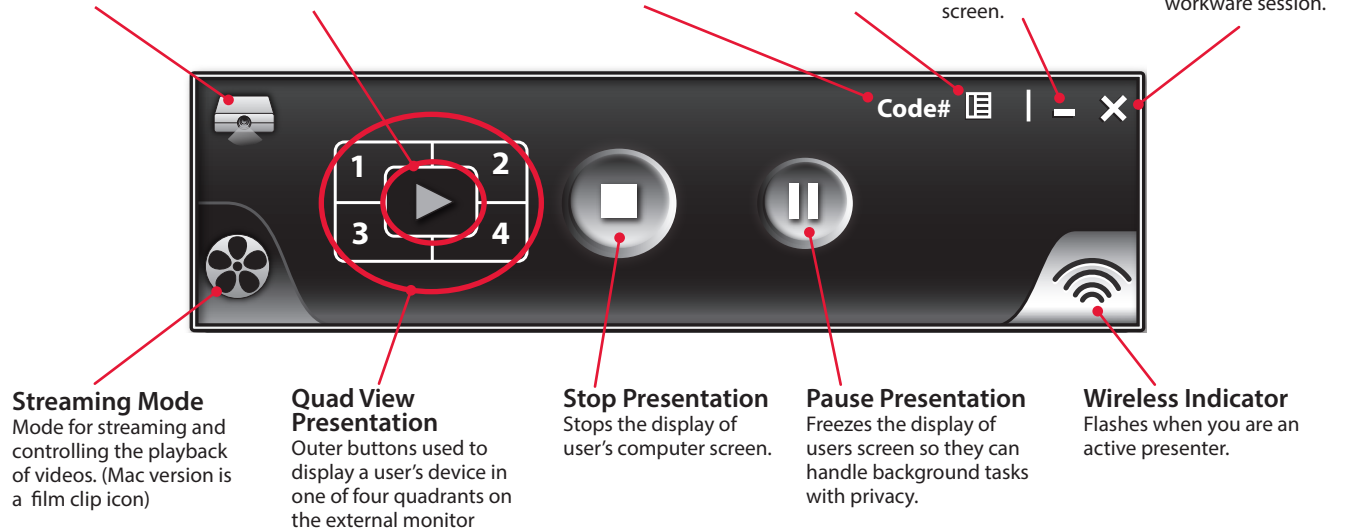
Opens menu of advanced controls.

Minimize/Maximize

Opens and closes the workware information screen.

Close/Log Out

Closes the Wireless Control Screen and logs them out of the workware session.



Streaming Mode

Mode for streaming and controlling the playback of videos. (Mac version is a film clip icon)

Quad View Presentation

Outer buttons used to display a user's device in one of four quadrants on the external monitor

Stop Presentation

Stops the display of user's computer screen.

Pause Presentation

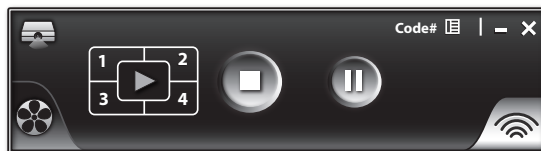
Freezes the display of users screen so they can handle background tasks with privacy.

Wireless Indicator

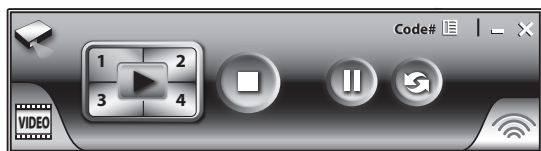
Flashes when you are an active presenter.

The wireless control screen – PC/mac versions

The wireless control screen is available in both Windows and Mac versions. The two versions look slightly different but perform the same functions.



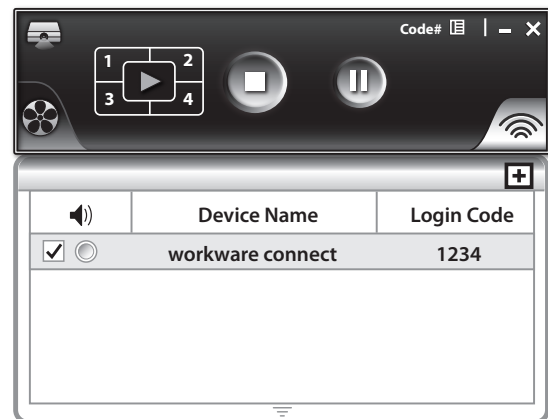
Wireless Control Screen – Presentation Mode
Windows Version



Wireless Control Screen – Presentation Mode
Mac Version

The wireless control screen – minimize/maximize button

The Minimize/Maximize button will open and close the workware information screen.



Wireless Control Screen – Presentation Mode
with information screen open



wireless presentation software | wireless control screen – quad view

Quad View Mode (wireless users only)

- Quad View is a feature of workware available in presentation mode on the wireless control screen. It allows up to 4 devices to display content on a single monitor at the same time with.
- Quad View is started when a user activates one of the numbered quadrants on the Wireless Control Screen.
- Quad View sessions are ended whenever a users re-enters full screen mode by pressing the play button (▶).
- Audio is not supported when Quad View is being used.

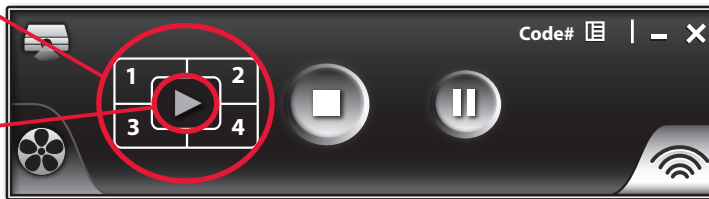
Quad View Monitor (Outer Buttons)

Displays user's device in one of four quadrants of the external Monitor

Full Screen Monitor (Inner Button)

Projects user's device full screen on the external monitor.

workware – Wireless Control Screen



External Monitor



Press 1 to use upper left hand quadrant



Device 1



Press 2 to use upper right hand quadrant



Device 2



Press 3 to use lower left hand quadrant



Device 3



Press 4 to use lower right hand quadrant



Device 4



wireless presentation software | wireless control screen – streaming mode

- The workware wireless control screen has two modes, the Presentation Mode and Streaming Mode. Users can switch between the modes with the projector button and the film reel button on the left side of the window.
- The streaming mode allows users to stream full frame video and audio wirelessly onto an external monitor.
- workware’s streaming mode streams video at 30 frames per second with audio. This mode uses more wireless network bandwidth but provides smoother video playback than presentation mode.
- Videos must be stored on the computer locally to wireless play on the external monitor in streaming mode.

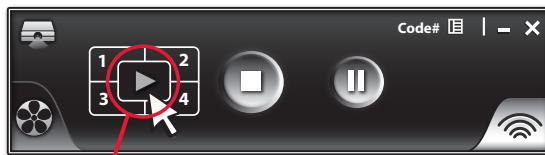
Wireless Control Screen – Streaming Mode

Presentation Mode Mode for controlling the projection of a user’s device on an external monitor.	Play Starts video playback	Login Code Displays the login code for current wireless session.	Menu Opens menu of advanced control screen functions.	Minimize/Maximize Opens and closes the workware information screen.	Close/Log Out Closes the Wireless Control Screen and logs them out of the workware session.
Streaming Mode Mode for streaming and controlling the playback of videos.	Stop Stops the display of user’s computer screen.	Browse for Video Allows user to browse their device to locate a stored video.	Volume Controls Video volume	Wireless Indicator Flashes when you are an active presenter.	

How to start a full frame video using the wireless control screen in streaming mode:

- 1 With the wireless control screen in “presentation mode” press the Play Button (▶) to present your device in full screen on the external monitor.

Wireless Control Screen – Presentation Mode



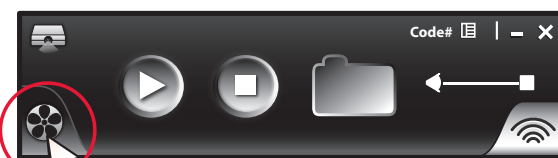
Displays user’s device full screen on external monitor

- 3 Browse for any Movie/Video located on your device by pressing the browse button (📁).



Play Button Browse Button

- 2 Switch to the “streaming mode” by pressing the button (movie reel-PC or film Clip-Mac) in the lower left corner of the window. This increases the frame per second rate for smooth playback of full frame video.



streaming mode button – switches the wireless control screen into the streaming mode.

- 4 Press the Play button (▶) to start video playback.

External Monitor



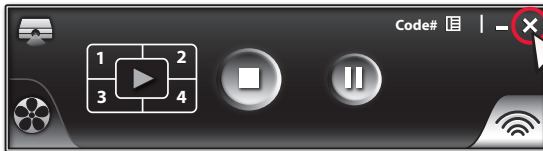


wireless presentation software | how to logout of a wireless session

Once a wireless session has ended all users must logout by pressing the (X) button in the upper right hand corner of the Wireless Control Screen. Once all the users have logged out a new 4 digit login code will be generated to start a new wireless session.

- 1 To end a wireless session each user must logout of by pressing the (X) button in the upper right hand corner of the Wireless Control Screen.

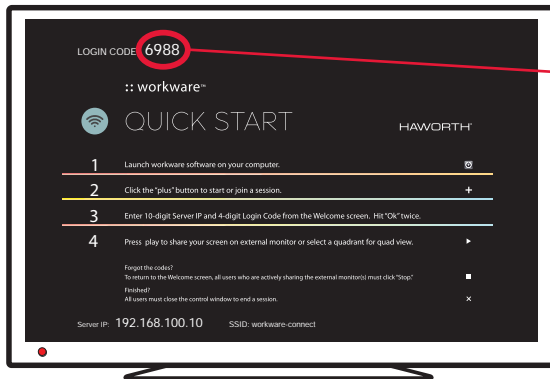
Wireless Control Screen – Presentation Mode



Close/Log Out
Closes the Wireless Control Screen and logs them out of the wireless session.

- 2 Once all the users have logged out a new 4 digit login code will be generated on the welcome screen, this will prepare the system for the next wireless session.

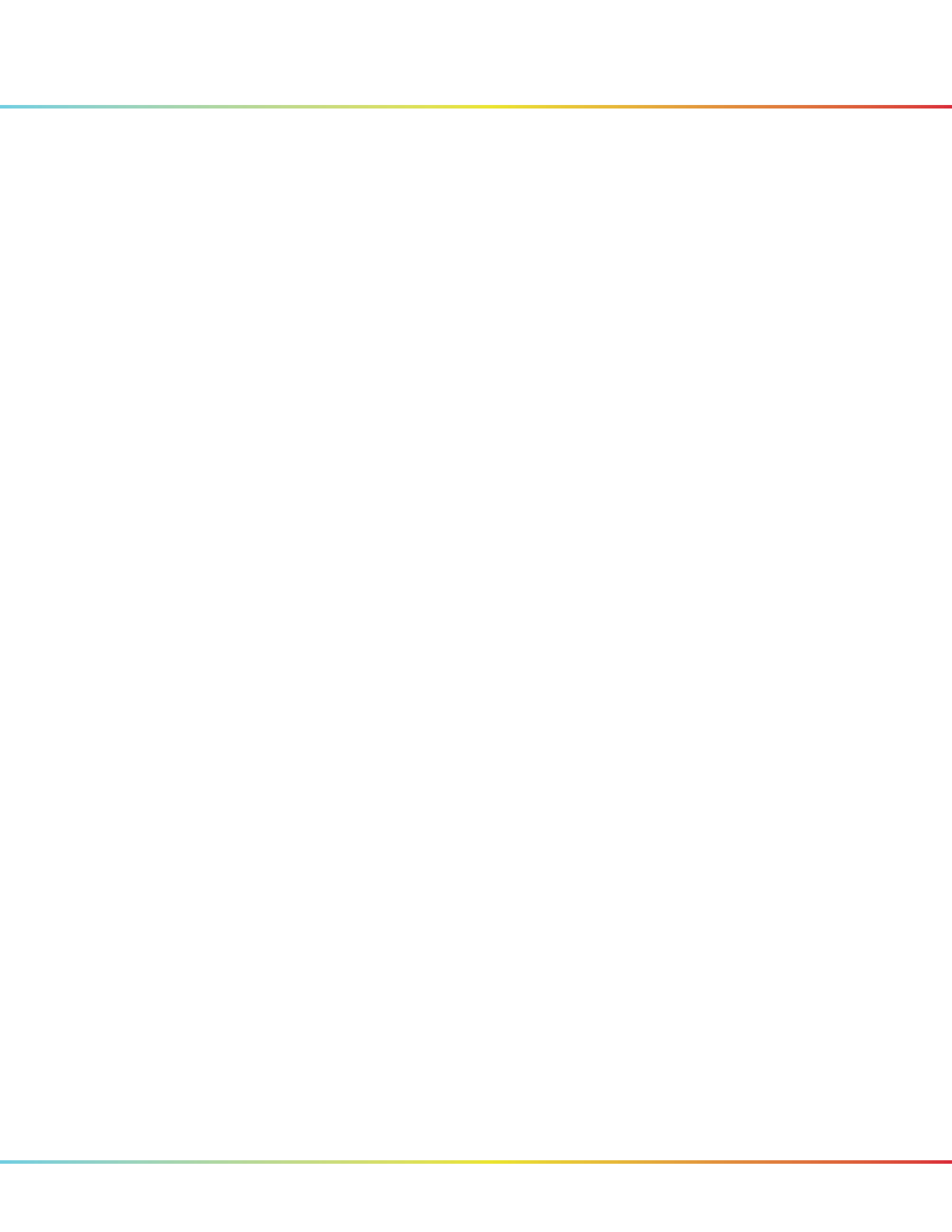
External Monitor – Welcome Screen



4-Digit Login Code
Each new wireless session generates a new 4-digit login number. Each user must input this number to login to a new wireless session.

IMPORTANT

All wireless users must log out immediately after finishing their wireless session otherwise the workware will not be able to create new wireless sessions.



HAWORTH®

workware™ connect | user guide

Haworth is a registered trademark of Haworth, Inc.
©Haworth, Inc. 2013

haworth.com | haworth-europe.com | haworth-asia.com