

A FRESH PERSPECTIVE

KENNEDY MUSEUM OF ART & OHIO MUSEUM COMPLEX

APRIL FAMILY ART & SCIENCE ENCOUNTER

Spring is finally here in Athens! Southeast Ohio is home to many beautiful trees. In honor of Earth Day and Arbor Day, the Kennedy Museum of Art and OHIO Museum Complex invite our visitors to look at our leafy neighbors from a fresh perspective.

This month's activity is inspired by a print in KMA collections by New York artist Sylvia Plimack Mangold, *Pin Oak II* (1991). Mangold's work doesn't just depict a tree itself; it has been described by *The Brooklyn Rail* as, "drawing and painting *looking at trees*."

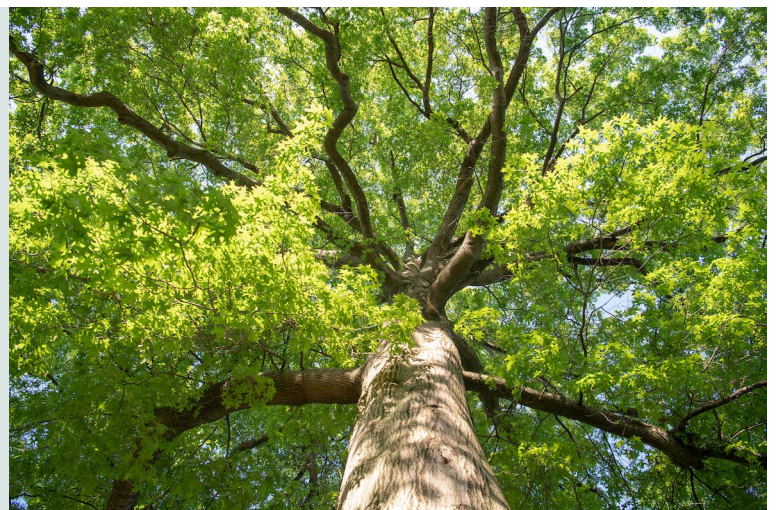


Sylvia Plimack Mangold (American, b. 1938)
Pin Oak II
Etching, drypoint, and aquatint
1991

Mangold is known for her representational depictions of interiors and landscapes, which she introduced to her work in the 1980s. Eventually, the landscape image filled the entire canvas and focused on individual trees that were familiar subjects from her own homestead. She often takes unusual vantage points and crops the composition to highlight the spaces between limbs and branches. Here, a pin oak tree is viewed from below.

We welcome you to closely consider some of the trees around the museum, on campus, or in your own life, and record what you see in drawing! The OHIO Museum Complex (OMC) offers the mAppAthens Campus Tree Tour and The Ridges Tree Tour that can guide you to unique species of trees in Athens.

Take a look at some of the OMC tours on [mAppAthens](#), including the [Campus Tree Tour](#), [The Ridges Tree Tour](#), or even [The Ridges Sculpture Walk](#), to explore what Athens has to offer this Earth Day and Arbor Day!



Pin Oak (stop #23) image courtesy of the Campus Tree Tour.

ACTIVITY #1

Perspective: The specific viewpoint from which you are looking at something, or your particular attitude toward something.

The Pin Oak is stop number 23 on OMC's mAppAthens Campus Tree Tour. Try finding it next to McGuffey Hall!

Will you lay on your back to draw it from the same view as this print?

What do you notice from this perspective that you didn't before?



KMA Education Team member Carrie chose a London Plane Tree, number 6 on The Ridges Tree Tour as her subject. Try seeing how many different perspectives you can get from one tree!

ACTIVITY #2



Take a closer look! Sometimes a tree's most unique feature is its bark. The American Sycamore, number 9 on The Ridges Tree Tour, has multicolored bark that sheds in the winter.

What unique patterns can you find when drawing it from just a few inches away?

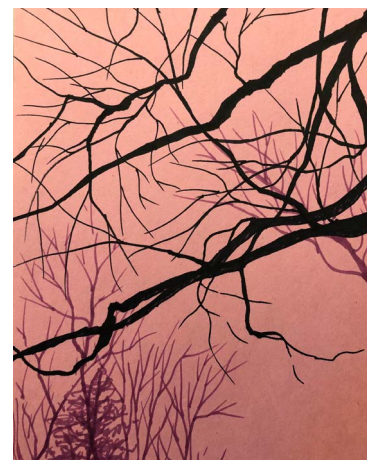
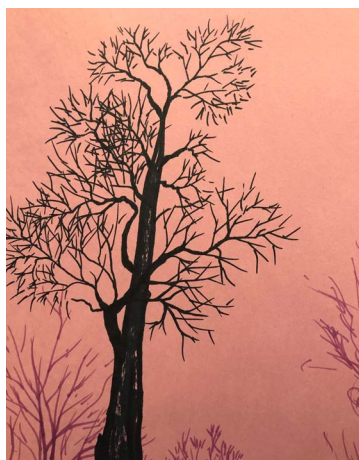
ACTIVITY #3

Silhouette: The side of an object that is fully in shadow, usually against a lighter background.

Time can change how we perceive things!

The Sassafras Tree, number 16 on The Ridges Tree Tour, can be viewed as you face the sunset.

Try using a black marker on colorful paper to capture the silhouette of the trees!



KMA Education Team member Kelly chose the Sassafras, number 16 on The Ridges Tree Tour, for a sunset view and a European Beech, number 46 on the Campus Tree Tour, at sunrise!

Share your drawings with us by tagging us on Instagram at: [@KennedyMuseumArtEDU](https://www.instagram.com/KennedyMuseumArtEDU/), [@ohiomuseumcomplex](https://www.instagram.com/ohiomuseumcomplex/) or post to our Facebook group: [Kennedy Museum of Art Experiences Group](https://www.facebook.com/KennedyMuseumofArtExperiencesGroup/)



KENNEDY
Museum of Art

Design by KMA Education Team member Kiana.