

# Lab & Rad Safety Newsletter



**Alan Watts**  
Radiation Safety Officer

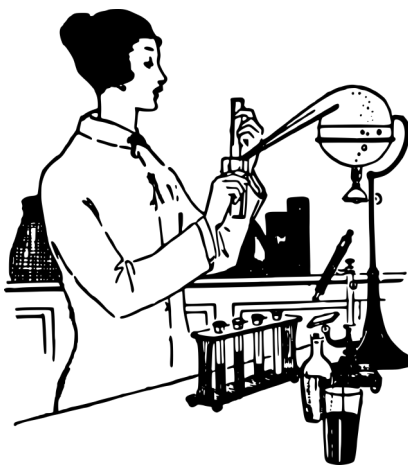
- In This Issue:**
- Ohio University Laboratory Safety Rules....pg.2**
  - Top 10 Reasons to Wear a Lab Coat.....pg.3-4**

**➤** = Required

**➤** = Optional



## Ohio University LABORATORY SAFETY RULES

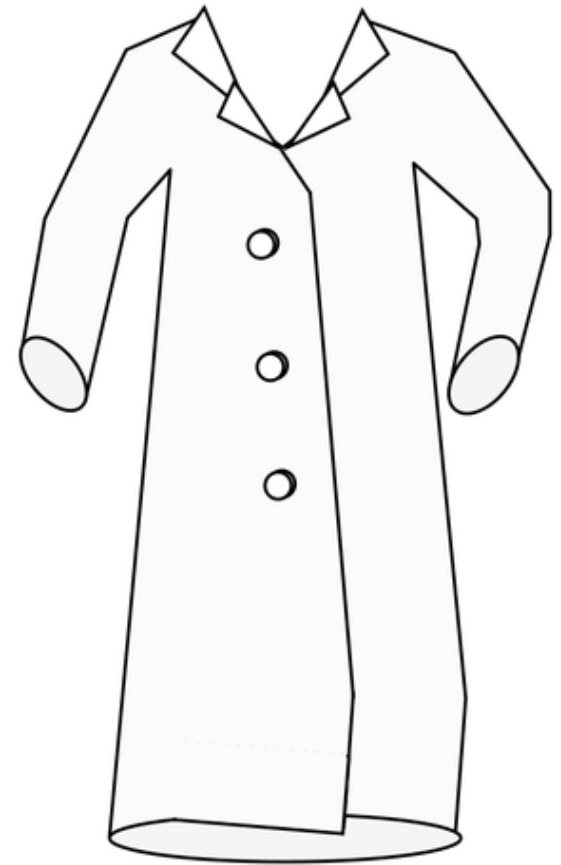


- Your personal safety is as important as the research results. Think safety – Work safely.
- No horseplay; act in a professional manner.
- Always wear approved safety glasses, in compliance with Ohio state law.
- No sandals or open-toed shoes in the laboratory.
- Long hair and loose clothing must be restrained.
- No eating, drinking, chewing gum and smoking in the laboratory.
- Never pipette by mouth. Never taste any chemicals.
- Do not store food, drinks or any personal items in a lab chemical refrigerator.
- Visitors must follow safety regulations; if necessary, visitors must be escorted.
- Do not perform any unauthorized experiments.
- Clean up after yourself.
- When you are finished for the day, return the area to a clean condition.
- Do not wear personal protective equipment (gloves, etc.) outside of the lab.



## Top 10 Reasons to Wear a Lab Coat

10. Lab coats with sleeves rolled down and all buttons buttoned make you look like a serious scientist (if you're also wearing safety goggles you look like a smart scientist).
9. Lab coats protect your regular clothing from dirt and non-obvious contamination in the lab.
8. Keeping your lab coat in the lab prevents spreading contamination from the laboratory to your home.
7. Tie-dyed shirts go in and out of style, but a tie-dyed lab coat is always fashionable.
6. Lab coats protect your skin from spills and splashes that occur in the laboratory.
5. Many lab coats are fire-resistant.
4. You can get lab coats with special features, like static-control, wrist cuff and back ties, to fit your specific application.



## Top 10 Reasons to Wear a Lab Coat (cont.)

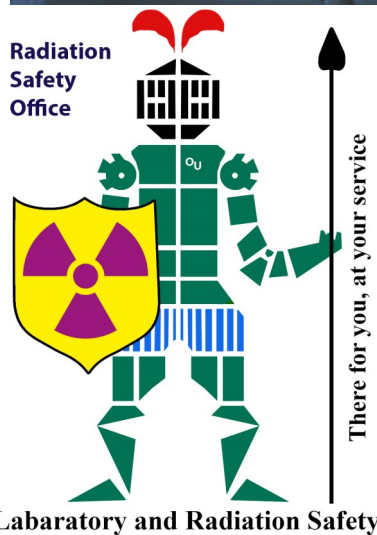
3. If you are wearing your lab coat, the safety staff won't stop you and ask, "Where's your lab coat?"
2. Many clothing items made with synthetic fabrics will melt in heat or fire causing severe burns. Lab coats are generally made of cotton or specialized fabrics that will not melt.
1. If something splashes onto your lab coat or your lab coat catches on fire – you can easily take the coat off. It is more difficult to remove contaminated clothing.



Who you gonna call?

### Radiation Safety Contacts

**Stay tuned for a continuation of the risk information in the next newsletter!**



Name	Office	Cell
OUPD	593-1911	
Alan Watts	593-4176	740-517-5075
Ricardo Gaytan	597-2950	956-740-5900
David Schleter	593-1662	740-591-0557
David Ingram	593-1705	740-707-5362