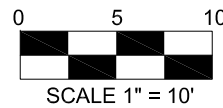


OHIO
UNIVERSITY

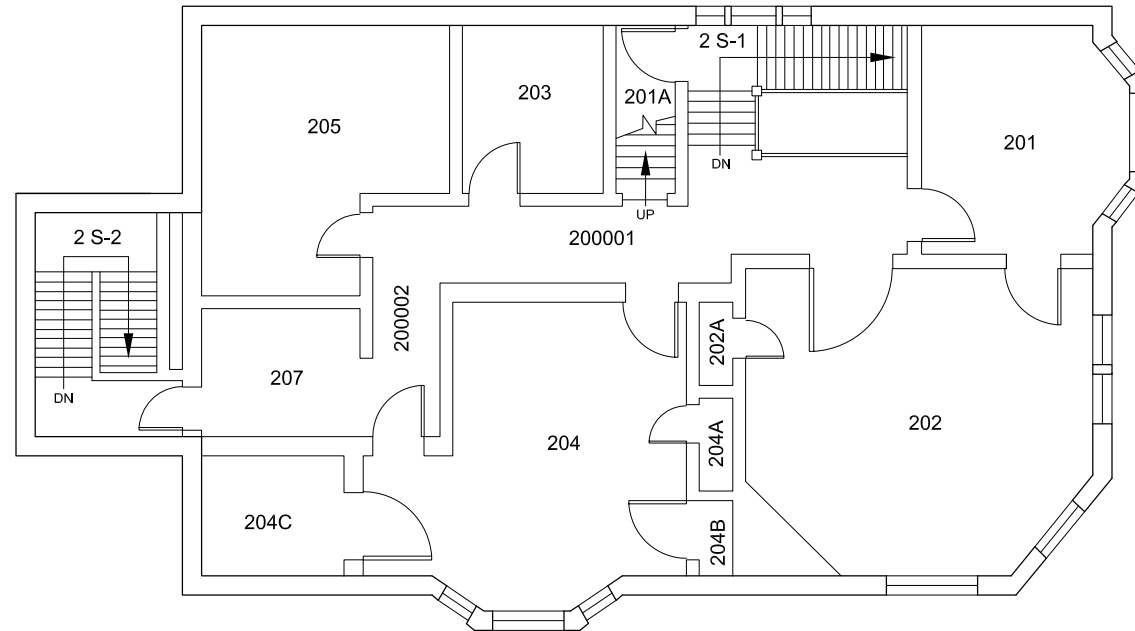
UNIVERSITY PLANNING &
SPACE MANAGEMENT

DRAWN BY:
N. POULOS

REV DATE:
9/19/2017



CREWSON HOUSE, FIRST FLOOR
BLDG #0761, COLLEGE GREEN
FLOOR AREA: 1,598 GSF, BUILDING AREA: 3,214 GSF

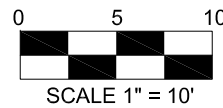


OHIO
UNIVERSITY

UNIVERSITY PLANNING &
SPACE MANAGEMENT

DRAWN BY:
N. POULOS

REV DATE:
9/19/2017



CREWSON HOUSE, SECOND FLOOR
BLDG #0761, COLLEGE GREEN
FLOOR AREA: 1,616 GSF, BUILDING AREA: 3,214 GSF

