

BRICKS Workshop Series

BRICKS Arches: Connected World

BRICKS: General Education Program (38 hours)

FOUNDATIONS



11
HRS

1. *Written Communication (3)
2. Advanced Writing (3)
3. *Quantitative Reasoning (3)
4. Intercultural Explorations (2)

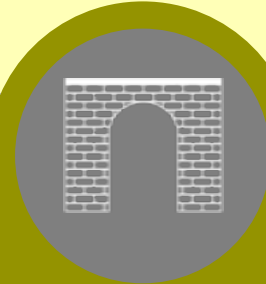
PILLARS



12
HRS

1. *Humanities: Texts and Contexts (3)
2. *Humanities: Arts (3)
3. *Natural Sciences (3)
4. *Social or Behavioral Sciences (3)

ARCHES



9
HRS

1. *Constructed World (3)
2. *Natural World (3)
3. *Connected World (3)

BRIDGES



4
HRS

- Connected World:
- ✓ 3 credit hours
 - ✓ OTM Social and Behavioral Science
 - ✓ Arch topic relevant
 - ✓ Critical Thinking or Teamwork

CAPSTONES



2
HRS

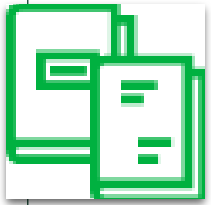
4. Learning & Doing (1)

Experience (2)

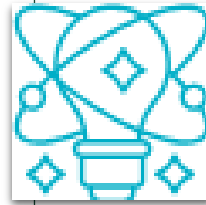
* All options must be OTM-approved.

Breadth of Knowledge Learning Outcomes

Connected World courses are expected to provide teaching and learning opportunities to achieve all four of OHIO's social or behavioral sciences learning outcomes.



Students will be able to explain primary terminology, concepts, and findings of the specific social or behavioral science discipline.



Students will be able to apply the logic and methods of social or behavioral scientific inquiry.



Students will be able to explain how social or behavioral sciences contribute to becoming an informed citizen.



Students will be able to describe ways that the fields of the social and behavioral sciences and their findings are influenced by the social identities of the investigators.

OTM Learning Outcomes

Connected World courses are expected to be approved by the Ohio Department of Higher Education (ODHE) as meeting at least one learning outcome and all course guidelines for [Ohio Transfer Module \(OTM\) social and behavioral science courses](#).

Learning Outcomes (Select 1 or more)

- a. Communicate effectively: All general education programs include a component for writing; many also include a component for oral communication or presentation
- b. Evaluate arguments in a logical fashion: Competence in analysis and logical argument are explicit learning goals for most general education programs, although these skills go by a variety of names (e.g., critical thinking, analysis, logical thinking, etc.)
- c. Employ the methods of inquiry characteristic of natural sciences, social sciences, and the arts and humanities: The tools for solving problems vary across disciplines; general education introduces students to methods of inquiry in several fields of study and thereby prepares students to integrate information from different disciplines
- d. Acquire an understanding of our global and diverse culture and society
- e. Engage in our democratic society: One of the overarching goals of general education is to prepare students to be active and informed citizens, the development of a disposition to participate in and contribute to our democracy in full is of equal importance to the goal of having the skills to do so intelligently.

OTM Guidelines

Connected World courses are expected to be approved by the Ohio Department of Higher Education (ODHE) as meeting at least one learning outcome and all course guidelines for [Ohio Transfer Module \(OTM\) Social and Behavioral science courses](#).

Guidelines (all 10)

- #1: Has entry level college proficiencies appropriate to the course.
- #2–6: Is not remedial / developmental, variable from term to term, special topics, upper-division, or narrowly focused technical or pre-technical.
- #7: Allows students to acquire an understanding of our global and diverse culture and society.
- #8: Is an introductory-level course that explains through empirical investigation and theoretical interpretation the behavior of individuals and/or various groups in societies, economics, governments or subcultures.
- #9: Is from either a social or behavioral science discipline.
- #10: employs the methods of inquiry characteristic of social and behavioral courses.

OTM approval ≠ TAG approval

Ohio Transfer Module (OTM) approved courses are not the same as Transfer Assurance Guide (TAG) approved courses.

OTM

- Meets guidelines for an OTM category
- Reviewed under guidelines
- Guaranteed to transfer for the OTM category across institutions
- General education-specific

VS

TAG

- Matched to equivalent courses
- Reviewed for at least 70% equivalency (i.e., course content and learning outcomes)
- Guaranteed to transfer as the same course across institutions
- General education, pre-major, or major

Pillars or Arches?

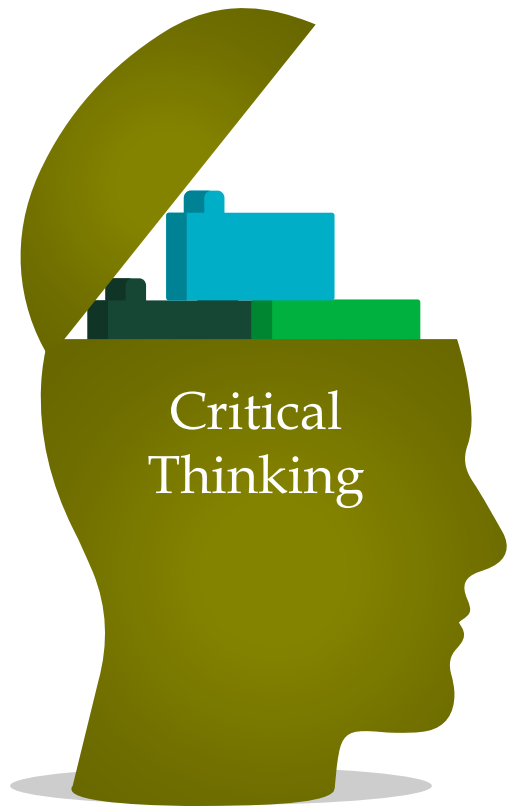
OTM-approved Social or Behavioral Science courses may fit into either Pillars: Social or Behavioral Science or Arches: Connected World – but not both.

Characteristic	Pillars Social or Behavioral Science	Arch Connected World
Breadth of Knowledge Outcome	Social or Behavioral Sciences	Social or Behavioral Sciences
Common Goal Outcome	<i>none</i>	Critical Thinking and/or Teamwork
OTM Category	OTM Social and Behavioral Sciences	OTM Social and Behavioral Sciences
Topic Requirement	<i>none</i>	Fits with an Arch topic
Typical Bloom's Taxonomy levels	remember, understand	apply, analyze, evaluate
Typical enrollment	Large lecture	Smaller lecture

Critical Thinking Learning Outcomes

Connected World courses are expected to provide teaching and learning opportunities to achieve OHIO's **critical thinking** OR teamwork learning outcomes.

Critical Thinking: a habit of mind characterized by the comprehensive exploration of issues, ideas, artifacts, and events before accepting or formulating an opinion or conclusion.



Exploration of Issues. Students will be able to critically state, describe, and consider an issue or problem.

Use of Evidence. Students will be able to use information from source(s) with enough interpretation/evaluation to develop a comprehensive analysis or synthesis.

Context and Assumptions. Students will be able to systematically and methodically analyze assumptions and carefully evaluate the relevance of contexts when presenting a position.

Student's position. Students will be able to state a specific position (i.e., perspective, thesis, or hypothesis) that is thoughtful, recognizes complexities, and acknowledges limitations.

Conclusions and Outcomes. Students will be able to state conclusions and related outcomes (consequences and implications) logically and in a priority order.

Teamwork Learning Outcomes

Connected World courses are expected to provide teaching and learning opportunities to achieve OHIO's critical thinking OR **teamwork** learning outcomes.

Teamwork: the behaviors under the control of individual team members (i.e., effort they put into team tasks, their manner of interacting with others on the team, and the quantity and quality of contributions they make to team discussions.)



Contributions to Meetings. Students will be able to contribute ideas, solutions, and courses of action during team meetings.

Engagement of Members. Students will be able to engage other team members, constructively and respectfully.

Individual Contributions. Students will be able to provide meaningful contributions to the team that advances the work of the group.

Constructive Team Climate. Students will be able to foster a constructive team climate.

Conflict Management. Students will be able to manage team conflict.

Arch Topics

Connected World courses are expected to fit into one Arch topic. As of Fall 2020, five arch topics have been proposed.



Health &
Wellness



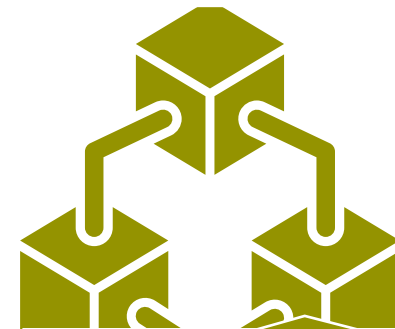
Society & Justice



Global
Perspectives



Sustainability



Science, Technology,
and Society



Connected World (Critical Thinking): ICC Review

UCC's Individual Course Committee (ICC) will review Connected World course components (i.e., description, learning outcomes, topics lists, texts/readings, and key grade factors) to ensure the course includes:

- ✓ At least three credit hours of formalized instruction is focused on teaching and learning social or behavioral sciences learning outcomes.
- ✓ OTM approval competed or in-progress.



- ✓ Instruction about critical thinking and its components
- ✓ Opportunities for students to actively conceptualize, apply, analyze, synthesize, and evaluate information from external sources, observation, experience, reflection, reasoning, or communication

Sample Learning Outcomes

- *For a general psychology course with a critical thinking focus*
 1. Students will be able to identify and define psychological terms and concepts.
 2. Students will be able to explain issues or problems using psychology terms and concepts.
 3. Students will be able to apply the logic and methods of psychological scientific inquiry.
 4. Students will be able to explain how psychological scientific inquiry is influenced by investigator's social identity.
 5. Students will be able to interpret, evaluate, and synthesize relevant context, assumptions, and research evidence.
 6. Students will be able to state and justify their own positions about an issue using psychological concepts and research.
 7. Students will be able to describe the connection between psychology and becoming an informed citizen.

Connected World (Teamwork): ICC Review

UCC's Individual Course Committee (ICC) will review Connected World course components (i.e., description, learning outcomes, topics lists, texts/readings, and key grade factors) to ensure the course includes:

- ✓ At least three credit hours of formalized instruction is focused on teaching and learning social or behavioral sciences breadth of knowledge learning outcomes.
- ✓ OTM approval completed or in-progress.



- ✓ Instruction about expectations for managing and contributing to a team project/assignment
- ✓ Instruction about interpersonal communication, cultural awareness, collaboration, and inclusion
- ✓ Significant team project/assignment spanning weeks
- ✓ Graded peer evaluations

Sample Learning Outcomes

- *Connected World course (teamwork focus) for a generic psychology course*
 1. Students will be able to identify and define psychological terms and concepts.
 2. Students will be able to apply the logic and methods of psychological scientific inquiry.
 3. Students will be able to explain how psychological scientific inquiry is influenced by investigator's social identity.
 4. Students will be able to describe the connection between psychology and becoming an informed citizen.
 5. Students will be able to evaluate their own and peers' abilities to contribute to meetings and teamwork products.
 6. Students will be able to evaluate their own and peers' abilities to engage with others respectfully, to foster a constructive team climate, and to manage team conflict effectively.

Connected World: Summary

Must be OTM-approved as Social and Behavioral Sciences
(completed or in-progress)

Must deliver teaching and learning opportunities to achieve all
four social or behavioral science learning outcomes

Must deliver teaching and learning opportunities to achieve all
five critical thinking learning outcomes or all five teamwork
learning outcomes

Cannot be approved as any other Pillar or Arch component

Will be reviewed to ensure that at least three credit hours are
focused on teaching and learning social or behavioral science
learning outcomes with the integration of either critical thinking
or teamwork learning outcomes.



THANK YOU