



OHIO
UNIVERSITY

College of Health Sciences and Professions

Office of the Dean

Grover Center W379
Athens, OH 45701-2979
T: 740.593.9336
F: 740.593.0285
www.ouchsp.org

Department of Social and Public Health

Grover Center W324
T: 740.593.4675

School of Applied Health Sciences and Wellness

Grover Center E317
T: 740.566.0470.

School of Nursing

Grover Center E365
T: 740.593.4494

School of Rehabilitation and Communication Sciences

Grover Center W290
T: 740.593.1224

Annual Report: *Faculty Research & Scholarship* (January 1, 2010—December 31, 2010)

Table of Contents

College Organizational Chart

Schools and Departments

Department of Social & Public Health (DSPH)
Undergraduate and Graduate Programs
Accreditation

School of Applied Health Sciences & Wellness (SAHSW)
Undergraduate and Graduate Programs
Accreditation

School of Nursing (SON)
Undergraduate and Graduate Programs
Accreditation

School of Rehabilitation & Communication Sciences (SRCS)
Undergraduate and Graduate Programs
Accreditation

Faculty

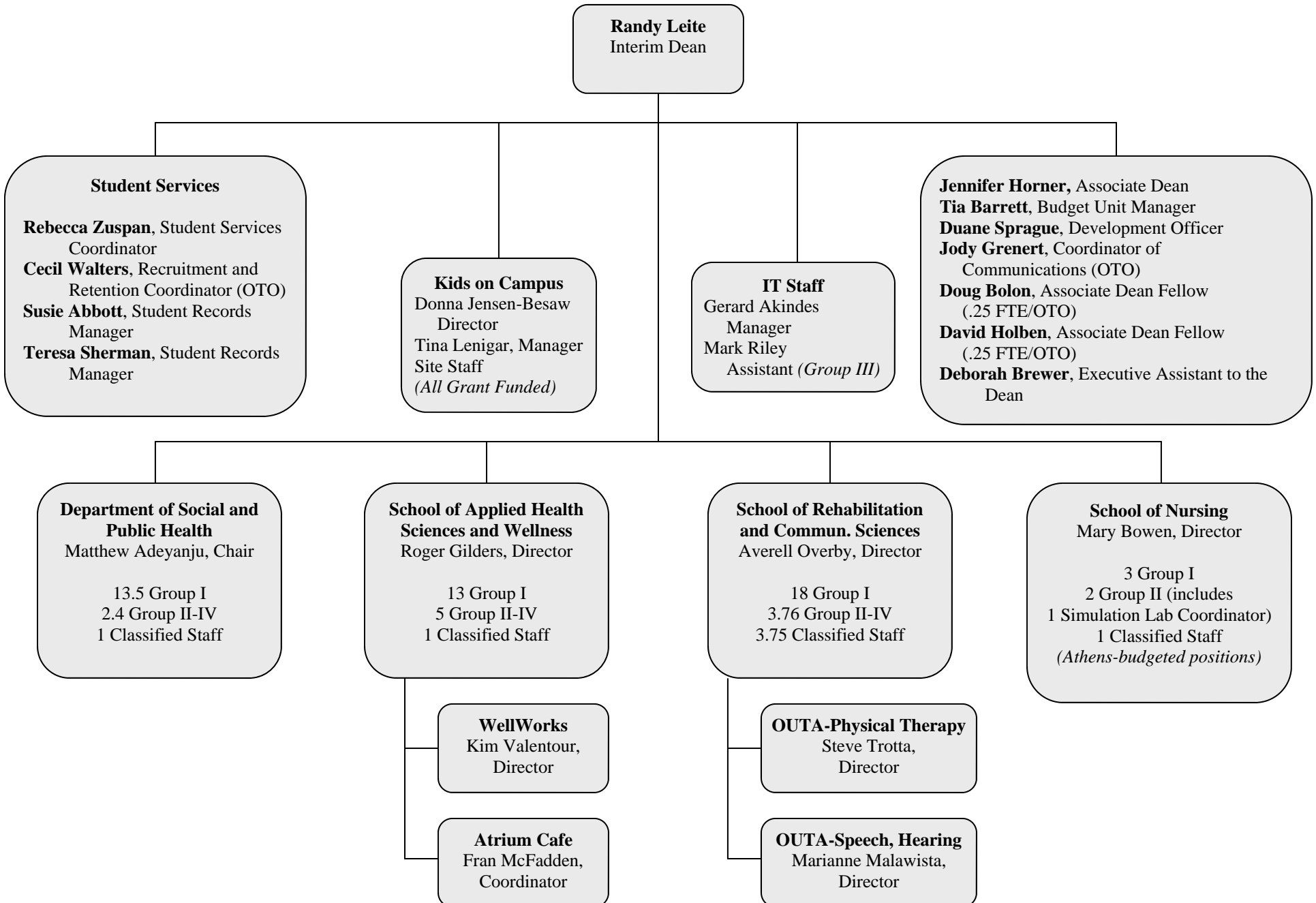
Research Laboratories

Scholarship and Creative Activity in 2010
Publications
Presentations

Grants & Contracts Awarded
Fiscal Year 2010 (July 1, 2009 to June 30, 2010)
Fiscal Year 2011 (July 1, 2010 to June 30, 2011)

College of Health Sciences and Professions

August 2, 2010



Schools and Departments

Department of Social and Public Health

This department is distinguished by its breadth of programs addressing community health, environmental and population-level diseases, and health administration. At the beginning of calendar year 2010, this department had 13.5 Group I faculty; 2.4 Group II-IV, and 1 classified staff member. Social work programs officially relocated to the College July 1, 2011.

Undergraduate programs

Bachelor of Science in Health (BS-H)—Community Health; Long-Term Care; Health Administration

Bachelor of Science in Environmental Health (BS-EH)

Bachelor of Science in Industrial Hygiene (BS-IH)

Bachelor of Science in Child and Family Studies (BS-CFS) [phasing out Human and Consumer Sciences (BS-HCS)—Family Studies]

Bachelor of Arts in Social Work (BA-SW) ^{CHSP 7/1/2011}

Interdisciplinary Certificate in Gerontology

Graduate programs

Master of Health Administration—Online (MHA)

Master of Public Health (MPH)

Master of Science in Child and Family Studies (MS-CFS) [phasing out Human and Consumer Sciences (MS-HCS)—Family Studies]

Master of Arts in Social Work (MA-SW) ^{CHSP 7/1/2011}

Certificate in African Community Health Services

Certificate in Health Care Services Administration

Certificate in Health Policy

Interdisciplinary Certificate in Gerontology

Fall quarterly student major FTE (2010)

<i>Program Name</i>	<i>Undergraduate</i>	<i>Graduate</i>
Child & Family Studies	94	7
Environmental Health & Industrial Hygiene	58	0
Health Administration & Long Term Care Administration	306	154
Public Health	44	13

Accreditation

Industrial Hygiene (BS): Applied Science Accreditation Commission (ASAC), 2004-2010; Accreditation Board for Engineering and Technology (ABET), 2004-2010

Environmental Health (BS): National Environmental Health Science and Protection Accreditation Council (NEHSPAC), 2004-2010

Long Term Care Administration (BS): National Association of Boards of Examiners for Long Term Care Administrators (NAB), 2005-2010

Public Health (MPH): Council on Education for Public Health (CEPH), 2009-2016

Social Work (BA, MA): Council on Social Work Education (CSWE), 2006-2014¹

School of Applied Health Sciences and Wellness

This school includes a set of inter-related academic degrees in exercise physiology, nutrition, and athletic training supported by two ancillary units in the college: The Atrium Café, and WellWorks. At the beginning of calendar year 2010, this school had 13 Group I faculty, 5 Group II-IV faculty (including WellWorks and the Atrium Café), and 1 classified staff member.

Undergraduate programs

Bachelor of Science in Athletic Training (BS-AT)

Bachelor of Science in Exercise Physiology (BS-EP)

Bachelor of Science in Food and Nutrition Sciences (BS-FNS) [phasing out Human and Consumer Sciences (BS-HCS)—Nutrition]:

- *Nutrition*
- *Applied Nutrition*

Graduate programs

Master of Science in Athletic Training (MS-AT)

Master of Science in Physiology of Exercise

Master of Science in Food and Nutrition Sciences (MS-FNS) [phasing out Human and Consumer Sciences (MS-HCS)—Food and Nutrition]

Fall quarterly student major FTE (2010)

<i>Program Name</i>	<i>Undergraduate</i>	<i>Graduate</i>
Athletic Training	141	30
Exercise Physiology	435	15
Food and Nutrition Sciences	131	15

Accreditation

Applied Nutrition (formerly Dietetics) (B.S.): Commission on Accreditation for Dietetics Education (CADE), 2005-2015

Athletic Training (BS): Commission on Accreditation of Athletic Training Education (CAATE), 2007-2012

Athletic Training (MS): National Athletic Trainers' Association (NATA), 2008 -2013

School of Nursing

The school is comprised of a comprehensive ladder of nursing programs, from associate degree to Master of Science in Nursing. The RN-to-BSN is an online program with national distribution. At the beginning of calendar year 2010, on the Athens campus, this School had 3 Group I faculty, 2 Group II-IV faculty (including one simulation lab coordinator), and 3.75 classified staff members. Additional faculty, academic advisors, and classified staff members serve the online and regional campus nursing programs.²

Undergraduate programs

Associate Degree in Nursing (ADN) (regional campus program)
Bachelor of Science in Nursing (BSN)
Registered Nurse-to-Bachelor of Science in Nursing (RN-to-BSN)
School Nurse License

Graduate programs

Master of Nursing (MSN) with three major areas of concentration:

- *Education,*
- *Administration, and*
- *Family Nurse Practitioner*

Fall quarterly student major FTE (2010)

<i>Program Name</i>	<i>Undergraduate</i>	<i>Graduate</i>
Nursing (Athens Campus)	315	32

Accreditation

Nursing (AD): National League for Nursing Accrediting Commission (NLNAC), 2007-2015; and Ohio Board of Nursing (OBN), 2005-2010

Nursing (RN-to-BSN): Commission for Collegiate Nursing Education (CCNE), 2011-2021

Nursing (BSN): Commission for Collegiate Nursing Education (CCNE), 2011-2021

Nursing (MSN): Commission for Collegiate Nursing Education (CCNE), 2007-2012

² The Online RN-to-BSN program enrolled 4,103 students (Fall 2010).

School of Rehabilitation and Communication Sciences

The School is comprised of the programs of Physical Therapy and Communication Sciences and Disorders. Physical Therapy offers a doctorate, and the Communication Sciences and Disorders program offers bachelor's and master's preparation, as well as both an Audiology Doctorate and Doctor of Philosophy degrees. At the beginning of calendar year 2010, this school had 18 Group I faculty members, 3.76 Group II-IV faculty members, and 3.75 classified staff members, some of whom staff OU Therapy Associates (offering physical therapy, and speech, language and hearing services).

Undergraduate Programs

*Bachelor of Science in Communication Sciences and Disorders (BS-CSD) [formerly Hearing, Speech and Language Sciences, BS-HSLS]
Hearing, Speech and Language Sciences (Minor)
Honors Tutorial Program, Hearing Speech and Language Sciences*

Graduate programs

*Doctor of Physical Therapy (DPT) and transitional DPT
Master of Arts in Communication Sciences and Disorders (MA-CSD) [formerly Speech-Language Pathology, MA-SLP]
Doctor of Clinical Audiology (AuD)
Doctor of Philosophy in Hearing Science (PhD-HS)
Doctor of Philosophy in Speech-Language Science (PhD-SLS)
Teacher Certification for Speech-Language Pathology*

Fall quarterly student major FTE (2010)

<i>Program Name</i>	<i>Undergraduate</i>	<i>Graduate</i>
Communication Sciences and Disorders	315	92
Physical Therapy	0	116

Accreditation

Physical Therapy (DPT): Commission on Accreditation in Physical Therapy Education (CAPTE), 2009-2019
Speech-Language Pathology (MA): Council on Academic Accreditation (CAA) of the American Speech-Language-Hearing Association (ASHA), 2004-2012
Audiology (AuD): Council on Academic Accreditation (CAA) of the American Speech-Language-Hearing Association (ASHA), 2004-2012

Faculty^{3,4}

(Listed alphabetically)

Group I

- Matthew O. Adeyanju, PhD, MPH, CHES, FASHA, Professor (DSPH)
- Cathy Baker, PhD, RN, Assistant Professor (SON)
- Tania Basta, PhD, MPH, CHES, Associate Professor (DSPH)
- Joann Benigno, PhD, Assistant Professor (SRCS)
- Darlene Berryman, PhD, RD, LD Associate Professor (SAHSW)
- Doug Bolon, PhD, Associate Professor (DSPH)
- Robert G. Brannan, PhD, Assistant Professor (SAHSW)
- Mary E. Bowen, RN, DNS, JD, NEA, Professor (SON)
- Susan Bullard, PhD, Assistant Professor (SAHSW) ^{RES-RET}
- Jenny Chabot, PhD, CCLS, Associate Professor (DSPH)
- Gary S. Chleboun, PhD, PT, Professor (SRCS)
- Sharon A. Denham, DSN,RN, Professor (SON) ^{ER}
- Jeffrey J. DiGiovanni, PhD, Associate Professor (SRCS)
- Warren Galbreath, PhD, SW, Associate Professor (DSPH)
- Roger Gilders, PhD, CSCS, Professor & School Director (SAHSW)
- Brooke Hallowell, PhD, Professor (SRCS) ^{P & T}
- Emily Harman, RN, MSN, Assistant Professor (SON) ^{ER}
- Deborah E. Henderson, PhD, RN, Professor (SON)
- David H. Holben, PhD, RD, LD, Professor (SAHSW)
- Cheryl Howe, PhD, CES, CSCS, CEP, Assistant Professor (SAHSW)
- Gregory Janson, PhD, Associate Professor (DSPH)
- Fuh-Cherng [Fuh] Jeng, MD, PhD, Assistant Professor (SRCS)
- Teresa Julian, PhD, CNP, Associate Professor (SON)
- Joan Jurich, PhD, Associate Professor (DSPH)

³This list includes faculty members who held appointments during calendar year **2010** within those schools that remained in the new College of Health Sciences and Professions July 1, 2010 forward, as well as faculty members from the Department of Social Work who joined the college in July 1, 2011.

⁴ The acronym after each entry (in parentheses) indicates the current department or school affiliation: Department of Social and Public Health (**DSPH**); School of Applied Health Sciences and Wellness (**SAHSW**); School of Nursing (**SON**); School of Rehabilitation and Communication Sciences (**SRCS**).

- Youngsun Kim, PhD, Associate Professor (SRCS) ^{P & T}
- B. Andrew Krause, PhD, AT, Assistant Professor (SAHSW)
- Michael Kushnick, PhD, HFS, Associate Professor (SAHSW)
- Chao-Yang Lee, PhD, Associate Professor (SRCS)
- Mingun Lee, PhD, SW, Assistant Professor (DSPH)
- Gari Lesnoff-Caravaglia, PhD, Professor (DSPH) ^{RES-RET}
- Margaret Manoogian, PhD, Associate Professor (DSPH) ^{RES-RET}
- Sally A. Marinellie, PhD, Associate Professor (SRCS)
- John McCarthy, PhD, Associate Professor (SRCS) ^{P & T}
- Kristen Metzler-Wilson, PhD, PT, Assistant Professor (SRCS)
- Eleanor Miller, PhD, RN, Assistant Professor (SON)
- James W. Montgomery, PhD, Professor (SRCS)
- Michele Morrone, PhD, RS, Associate Professor (DSPH)
- Sharon Mullen, RN, PhD, Assistant Professor (SON) ^{ER}
- Christina Nyirati, PhD, CNP, Assistant Professor (SON)
- Averell S. Overby, DrPH, PT, Associate Professor & School Director (SRCS)
- Helmut W. Paschold, PhD, CIH, CSP, PE (TX), Assistant Professor (DSPH)
- Carla Phillips, RN, PhD, Assistant Professor (SON) ^{ER}
- Natalie Pope, PhD, SW, Assistant Professor (DSPH)
- Edward Potkanowicz, PhD, HFS, Assistant Professor (SAHSW) ^{RES-RET}
- Brian Ragan, PhD, AT, Assistant Professor (SAHSW)
- Sharon R. Rana, PhD, HFS, CSCS, Associate Professor (SAHSW)
- Dennis T. Ries, PhD, Associate Professor (SRCS) ^{P & T}
- Kathleen Rose-Grippa, PhD, RN, Professor (SON)
- David Russ, PhD, PT, Assistant Professor (SRCS)
- Tim Ryan, PhD, RS, CIH, Associate Professor (DSPH)
- Anthony M. Sallar, PhD, MPH, MBA, Assistant Professor (DSPH) ^{RES-RET}
- Susan Sarnoff, PhD, SW, Associate Professor (DSPH)
- Samuel Scott, PhD, PT, Assistant Professor (SRCS) ^{RES-RET}
- Alexander V. Sergeev, PhD, MD, MPH, Assistant Professor (DSPH)
- Betty Sindelar, PhD, PT, Associate Professor (SRCS)
- Therese Snively, PhD, Assistant Professor (SON) ^{RES-RET}
- Anne Sparks, PhD, SW, Assistant Professor (DSPH)

- Solveig Spjeldnes, PhD, SW, Assistant Professor (DSPH)
- Charles [Chad] Starkey, PhD, AT, FNATA, Professor (SAHSW) ^{P & T}
- David V. Stretton, PHD, MBA, CPA, Assistant Professor (DSPH)
- Kathleen Fox Tennant, PhD, APRN, BC, Assistant Professor (SON) ^{ER}
- James Thomas, PhD, PT, Associate Professor (SRCS)
- Jason White, PhD, MS, Assistant Professor (SAHSW) ^{PhD}
- Li Xu, MD, PhD, Associate Professor (SRCS)
- Selena Yearwood, PhD, CNP, Assistant Professor (SON) ^{RES-RET}

Group II

- Carole Alder, SW, LISW, Assistant Field Director, Instructor (DSPH)
- RuthAnn Althaus, PhD, MPH, MBA, MSLIS, Professor (DSPH)
- Trina Bookman, MS, CPR/AED/IT, FA/AED/IT, WSI/IT, LG/IT, Instructor (SAHSW)
- Nichole Brandes, AuD, CCC-SLP, Instructor of Audiology (SRCS)
- Sherlena Buchman, MSN, RN, Assistant Professor (SON)
- Michael Clevidence, MS, CSCS, Instructor (SAHSW)
- Michele Courtney, PT, MBA, Instructor (SRCS)
- David Dominguese, PhD, MS, AT, CSCS, CPR/AED, Instructor (SAHSW) ^{RES-RET}
- Erin Driscoll, MS, AT, CPR/AED, Instructor (SAHSW) ^{RES-RET}
- Susan Erlewine, MSN, RN, Assistant Professor (SON) ^{RES-RET}
- Denise Ferrell, MSN, RN, Assistant Professor (SON) ^{RES-RET}
- Judi Haberkorn, PhD, SW, Visiting Professor (DSPH)
- Terri Hood-Brown, MSN, RN, Assistant Professor (SON)
- Janice Howman, DPT, MEd, Assistant Professor (SRCS)
- Francis McFadden, MS, Assistant Professor (SAHSW), Manager of the Atrium Café
- Juli L. Miller, MSHA, Instructor (DSPH)
- Deborah Murray, MS, RD, LD, Assistant Professor (SAHSW)
- James Odenthal, PT, MBA, Instructor (SRCS)
- Freve Pace, SW, LISW, Field Director, Instructor (DSPH)
- Tracy Pritchard, SW, LISW, University Partnership Program Coordinator, Instructor (DSPH)
- Jennifer Saffel, RN, MSN, Assistant Professor (SON)
- Kayla Shinew, PhD, MS, AT, Instructor (SAHSW) ^{PhD}
- Petra Williams, PT MS NCS, Assistant Professor (SRCS)

- Lisa J. S. Yehl, MSHA, LNHA, Instructor (DSPH)

Group IV

- Jeff Bevan, MSN, CNP, Assistant Professor (SON) ^{RES-RET}

NOTES

CHSP 7/1/11—Social Work academically relocated to the College of Health Sciences and Professions July 1, 2011.

ER—Early retiree status.

P & T—Successful promotion and/or tenure review, effective academic year 2011-2012.

RES-RET—Resignation or retirement effective June 30, 2011.

PhD—Doctorate achieved on or before Spring 2011.

Research Laboratories at Grover Center⁵

- Auditory Electrophysiology (Fuh-Cherng Jeng, Director) (SRCS)
- Auditory Prosthesis Lab (Li Xu, Director) (SRCS)
- Auditory Psychophysics and Signal Processing Lab (Jeffrey DiGiovanni, Director) (SRCS)
- Augmentative and Alternative Communication Lab (John McCarthy, Director) (SRCS)
- Biomaterials Lab (Betty Sindelar, Director) (SRCS)
- Developmental Psycholinguistics Lab (James Montgomery, Director) (SRCS)
- Dysphagia Lab (Youngsun Kim, Director) (SRCS)
- Environmental Health / Industrial Hygiene Lab (Tim Ryan, Director) (DSPH)
- Environmental Research Lab (Tim Ryan, Director) (DSPH)
- Exercise Biochemistry Lab (Michael Kushnick, Director) (SAHSW)
- Exercise Physiology Lab (Sharon Rana and Michael Kushnick, Co-Directors) (SAHSW)
- Exercise Science Lab (Sharon Rana, Director) (SAHSW)
- Food Science Lab (Robert Brannan, Director) (AHSW)
- Motor Control Lab (James Thomas, Director) (SRCS)
- Muscle Physiology Lab (David Russ, Director) (SRCS)
- Neurolinguistics Lab (Brooke Hallowell, Director) (SRCS)
- Postural Control Lab (Averell Overby, Director) (SRCS)
- School-Age Language Lab (Sally Marinellie, Director) (SRCS)
- Sensory Analysis Lab (Robert Brannan, Director) (SAHSW)
- Speech Processing Lab (Chao-Yang Lee, Director) (SRCS)
- T.A.L.K. Lab (Joann Benigno, Director) (SRCS)
- Test Kitchen (Robert Brannan, Director) (SAHSW)
- Ultrasound/Muscle Imaging Lab (Gary Chleboun, Director) (SRCS)
- Vicon Motion Analysis Lab (James Thomas, Director) (SRCS)

⁵ Research laboratories listed are the responsibility of faculty in the College of Health Sciences and Professions (effective 7/1/10), and do not include research laboratories that have been relocated to other colleges as part of university restructuring.

Publications

in Calendar Year 2010

(Includes peer-reviewed manuscripts, chapters, full papers in monographs and proceedings, Epub ahead of print, and articles “in press” as of December 31, 2010.)

1. Aussanasuwannakul, A., Kenney, P. B., **Brannan, R. G.**, Slider, S. D., Salem, M., & Yao, J. (In press). Relating instrumental texture, determined by variable-blade and allo-Kramer shear attachments, to sensory analysis of rainbow trout, *Oncorhynchus mykiss*, fillets. *Journal of Agricultural and Food Chemistry*.
2. Barker, L., Crespo, R., Gerzoff, R., **Denham, S.**, Shrewsberry, M., & Cornelius-Averhart, D. (2010). Residence in a distressed county in Appalachia as a risk factor for diabetes. *Preventing Chronic Disease*, 7(5), 1-90.
3. Batchelder, B. C., **Krause, B. A.**, **Seegmiller, J. G.**, & **Starkey, C. A.** (2010). and Gastrointestinal temperature increases and hypohydration exists after collegiate men's ice hockey participation. *Journal of Strength and Conditioning Research*, 24, 68-73.
4. Bates, S., Kay, J., Code, C., & **Hallowell, B.** (2010). Eighteen years on: What next for the PALPA? *International Journal of Speech-Language Pathology*, 12, 190-202.
5. **Berryman, D. E.** (In press). Body composition, adipose tissue and energy balance. In Z. Laron & J. J. Kopchick (Eds.), *Laron syndrome: From man to mouse* (pp. 441-459). Heidelberg: Springer-Verlag GmbH Berlin.
6. **Berryman, D. E.**, List, E. O., Palmer, A. J., Chung, M.Y., Wright-Piekarski, J., Lubbers, E., O'Connor, P., Okada, S., & Kopchick, J. J. (2010). Two-year body composition analyses of long-lived GHR null mice. *Journals of Gerontology Series A: Biological Sciences and Medical Sciences*, 65(1), 31-40.
7. Bissett, R. L., Cheng, M. S. H., & **Brannan, R. G.** (2010). A quantitative assessment of the Research Chefs Association core competencies for the practicing culinologist. *Journal of Food Science Education*, 9(1), 11-18.
8. **Brannan, R. G.** (2010). Reactive sulfur species act as prooxidants in liposomal and skeletal muscle model systems. *Journal of Agricultural and Food Chemistry*, 58(6), 3767-3771.
9. Clark, B. C., Manini, T. M., Hoffman, R. L., Williams, P. S., Guiler, M. K., Knutson, M. J., McGlynn, M. L., & **Kushnick, M. R.** (2010, March 11). Relative safety of 4-weeks of low-intensity blood flow restricted resistance exercises in young, healthy adults. *Scandinavian Journal of Medicine & Science in Sports*. [E-Pub ahead of print.] doi: 10.1111/j.1600-0838.2010.01100.x
10. Clark, B. C., Taylor, J. L., Hoffman, R. L., Dearth, D. J., & **Thomas, J. S.** (2010). Cast immobilization increases long-interval intracortical inhibition. *Muscle & Nerve*, 42(3), 363-372.

11. Cosio, D., Heckman, T. G., Anderson, T., Heckman, B. D., Garske, J., & **McCarthy, J.** (2010). A telephone-delivered, motivational interviewing intervention to reduce risky sexual behavior in HIV-infected rural persons: A pilot randomized clinical trial. *Sexually Transmitted Diseases*, 37(3), 140-146.
12. Dearth, D. J., Umbel, J., Hoffman, R. L., **Russ, D. W.**, Wilson, T. E., & Clark, B. C. (2010) Men and women exhibit a similar time to task failure for a sustained, submaximal elbow extensor contraction. *European Journal of Applied Physiology*, 108(6), 1089-1098.
13. de Groot, M., **Kushnick, M.**, Doyle, T., Merrill, J., McGlynn, M., Shubrook, J., & Schwartz, F. (2010). A model of community-based behavioral intervention for depression in diabetes: Program ACTIVE. *Diabetes Spectrum*, 23(1), 15-17.
14. de Groot, M., **Kushnick, M.**, Doyle, T., Merrill, J., McGlynn, M., Shubrook, J., & Schwartz, F. (2010). Depression among adults with diabetes: Prevalence, impact and treatment options. *Diabetes Spectrum*, 23(1), 18-24.
15. **Delaney, E., Pennington, N.**, & Blankenship, M. (2010, April). The role of podcast lectures in associate degree nursing programs. *Teaching and Learning in Nursing*, 5(2), 54-57.
16. **Delaney, E.** (March, 2010). Going beyond office hours to improve student learning. *Faculty Focus Newsletter*. Available from <http://www.facultyfocus.com>
17. Denegar, C. R., **Starkey, C.**, & Konin, J. G. (2010). Clinical roundtable: Ultrasound. *Athletic Training & Sports Healthcare*, 2(3), 1-2.
18. **Denham, S. A.**, Remsberg, K., & Wood, L. (2010). Diabetes education in the Appalachian region: Providers' views. *Journal of Rural and Remote Health*, 20, 1321 (Online). Available from: <http://www.rrh.org.au>
19. **Denham, S. A.**, Wood, L., & Remsburg, K. (2010). Diabetes care: Provider disparities in the Appalachian Region. *Journal of Rural and Remote Health*, 10, 1320 (Online). Available from: <http://www.rrh.org.au>
20. Diddle, G., & **Denham, S. A.** (2010). Spirituality: Considering relationships with health and illness on those in Appalachia. *Journal of Transcultural Nursing*, 21(2), 175-182.
21. **DiGiovanni, J. J.** (2010). *Hearing-aid handbook 2011*. New York: Cengage Learning.
22. **DiGiovanni, J. J.**, & Pratt, R. (2010). Verification of in situ thresholds and integrated Real-Ear. *Journal of the American Academy of Audiology* 21(10), 663-670. doi:10.3766/jaaa.21.10.6
23. **DiGiovanni, J. J.**, Rutledge, J. C., Umble, C. S., & Mester, A. P. (2010, July). Performance of phonemically-targeted processing in conjunction with compression processing with spectral enhancement. *Proceedings of Meetings on Acoustics*, 9(1), 1-6. doi:10.1121/1.3478336
24. Doeringer, J. R., **Krause, B. A.**, & Hoch, M. A. (2010). Ice application effects on peroneus longus and tibialis anterior motoneuron excitability in subjects with functional ankle instability. *International Journal of Neuroscience*, 120, 17-22.

25. Domb, B., Drakos, M. C., Starkey, C., Callahan, L., & Allen, A. A. (2010). Injury in the National Basketball Association: A 17-year overview. *Sports Health: A Multidisciplinary Approach*, 2, 284-296. doi: 10.1177/1941738109357303
26. Duffrin, M. W., Hovland, J. A., Carraway-Stage, V., McLeod, M. S., Duffrin, C., Phillips, S., Rivera, D., Saum, D., Johanson, G., Graham, A., Lee, T., Bosse, M., & **Berryman, D. E.** (2010). Using food as a tool to teach science to 3rd grade students in Appalachian Ohio. *Journal of Food Science Education*, 9, 41-46.
27. Enderle, J., & **Hallowell, B.** (Eds.) (2010). *2007 annual review of engineering design projects to aid persons with disabilities*. Mansfield Center, CT: Creative Learning Press, Inc./ National Science Foundation.
28. Fontaine, C. P., **Ryan, T. J.**, Coschigano, P., & Colvin, R. (2010). Novel testing of a biological safety cabinet using PCR. *Applied Biosafety: Journal of the American Biological Safety Association*, 15(4), 186-196.
29. Goss, D. A., **Thomas, J. S.**, & Clark, B. C. (2010, October 20). Novel methods for quantifying neurophysiologic properties of the human lumbar paraspinal muscles. *Journal of Neuroscience Methods*. Epub ahead of print.] PMID: 20969893
30. **Holben, D. H.** (2010). Farmers' markets: Fertile ground for optimizing health. *Journal of the American Dietetics Association*, 110, 364-365.
31. **Holben, D. H.** (2010). Food security and adequate food access for the public. In S. Edelstein (Ed.), *Nutrition in public health* (3rd ed., pp. 268-281). Sudbury, MA: Jones and Bartlett Publishers.
32. **Holben, D. H.** (2010). Position of the American Dietetic Association on food insecurity in the United States. *Journal of the American Dietetics Association*, 110, 1368-1377.
33. **Horner, J.**, & Minifie, F. D. (2010, November 16). Research ethics I: Responsible conduct of research (RCR)—Historical and contemporary issues pertaining to human and animal experimentation. *Journal of Speech, Language and Hearing Research*. [Epub ahead of print.] doi: 10.1044/1092-4388(2010/09-0265)
34. **Horner, J.**, & Minifie, F. D. (2010, November 16). Research ethics II: Mentoring, collaboration, peer review, and data management and ownership. *Journal of Speech, Language and Hearing Research*. [Epub ahead of print.] doi: 10.1044/1092-4388(2010/09-0264)
35. **Horner, J.**, & Minifie, F. D. (2010, November 16). Research ethics III: Publication practices and authorship, conflicts of interest, and research misconduct. *Journal of Speech, Language and Hearing Research* [Epub ahead of print.] doi: 10.1044/1092-4388(2010/09-0263)
36. Hovland, J. A., McLeod, M. S., Duffrin, M. W., Johanson, G., & **Berryman, D. E.** (2010). School-based screening of the dietary intakes of third-graders in rural Appalachian Ohio. *Journal of School Health*, 80, 536-543.
37. **Howe, C. A.**, Freedson, P. S., Feldman, H. A., Osganian, S. K. (2010). Energy expenditure and enjoyment of common children's games in a simulated free-play environment. *Journal of Pediatrics*, 157, 936-942.

38. Howe, C. A., Harris, R. A., & Futin, B. (2010, October 12). A 10-month physical activity intervention improves body composition in young black boys. *Journal of Obesity*. [Epub ahead of print.] doi: 10.1155/2011/358581
39. Ingham, J. C., Minifie, F. D., **Horner, J.**, Robey, R. R., Lansing, C., McCartney, J. H., Slater, S. C., & Moss, S. E. (2010, November 16). Ethical principles associated with the publication of research in ASHA's scholarly journals: Importance and adequacy of coverage. *Journal of Speech, Language and Hearing Research*. [Epub ahead of print.] doi: 10.1044/1092-4388(2010/09-0260)
40. **Janson, G. R.** (2010). Helping students with severe behavioral problems. In B. R. Erford (Ed.), *Professional school counseling: A handbook of theories, programs & practices* (pp. 691-706). Austin, TX: CAPS Press.
41. **Janson, G. R.** (2010). Understanding elimination disorders: What school counselors need to know about enuresis and encopresis. In B. R. Erford (Ed.), *Professional school counseling: A handbook of theories, programs & practices* (pp. 707-720). Austin, TX: CAPS Press.
42. **Janson, G. R.** (2010). Trauma counseling. *ACA Encyclopedia of Counseling*. Alexandria, VA: American Counseling Association.
43. **Janson, G. R.** (In press). Under the clock tower, my father's wisdom: Teaching forgiveness. In R. E. Keim & L. A. Jacobson, (Eds.), *Wisdoms for parents: From parent educators*. Minneapolis, MN: NCFR.
44. **Janson, G. R.**, & King, M. A. (2010). Emotional safety in the classroom: The school counselor's role. In B. R. Erford (Ed.), *Professional school counseling: A handbook of theories, programs & practices* (pp. 866-872). Austin, TX: CAPS Press.
45. **Janson, G. R.**, & King, M. (2010, September). Myths about emotional maltreatment. *Journal of the Association for Early Childhood Education International*, 23(1), 1-7.
46. **Jeng, F.-C.**, Chung, H.-K., Lin, C.-D., Dickman, B. M., Hu, J., & Li, X. (In press). Exponential modeling of human frequency-following response to voice pitch: Effects of number of sweeps and stimulus intensity. *International Journal of Audiology*.
47. **Jeng, F.-C.**, Costilow, C. E., Stangherlin, D. P., Lin, C.D. (In press). Relative power of harmonics in human frequency-following responses associated with voice pitch in American and Chinese adults. *Perceptual and Motor Skills*.
48. **Jeng, F.-C.**, Hu, J., Dickman, B. M., Lin, C.-Y., Lin, C.-D., & Wang, C.-Y., Chung, H. K., & Li, X. (2010, November 4). Evaluation of two algorithms for detecting human frequency-following responses to voice pitch. *International Journal of Audiology*. [Epub ahead of print.] doi:10.3109/14992027.2010.515620
49. **Jeng, F.-C.**, Hu, J., Dickman M. B., Montgomery-Reagan, K., Tong, M., Wu, G., & Lin, C.-D. (In press). Cross-linguistic comparison of frequency-following responses to voice pitch in American and Chinese neonates and adults. *Ear and Hearing*.

50. **Jeng, F.-C.**, Schnabel, E. A., Dickman, B. M., Hu, J., **Li, X.**, Lin, C.-D., & Chung, H.-K. (2010). Early maturation of frequency-following responses to voice pitch in infants with normal hearing. *Percept Mot Skills*, 111(3), 765-784. doi:10.2466/10.22.24.PMS.111.6.765-784
51. Johnson, E. N., & **Thomas, J. S.** (2010) Effect of hamstring flexibility on hip and lumbar spine excursions during forward-reaching tasks in participants with and without low back pain. *Archives of Physical Medicine and Rehabilitation*, 91(7), 1140-1142.
52. Jung, H., **Spjeldnes, S.**, & Yamatani, H. (2010). Recidivism and survival time: Racial disparity among jail inmates, *Social Work Research*, 34(3), 181-188.
53. **Kim, Y.**, & McCullough, G. H. (2010). Maximal hyoid excursion in poststroke patients. *Dysphagia*, 25, 20-25.
54. King, M. & **Janson, G.** (In press). Beware emotional maltreatment. *Principal Magazine*, 18-21.
55. King, M.A. & **Janson, G. R.** (2010). The special needs of boys. In B. R. Erford (Ed.), *Professional school counseling: A handbook of theories, programs & practices* (pp. 858-865). Austin, TX: CAPS Press.
56. Kopchick, J. J., Tanda, H., **Berryman, D. E.**, & Laron, Z. (In press). Conclusions and future studies. In J. J. Kopchick & Z. Laron (Eds.), *Laron syndrome: From man to mouse* (pp. 513-520). Heidelberg: Springer-Verlag GmbH Berlin.
57. Kozey, S. L., Lyden, K., **Howe, C. A.**, Staudenmayer, J. W. & Freedson, P. S. (2010). Accelerometer output and MET values of common physical activities. *Medicine and Science in Sports and Exercise*, 42(9),1776-1784.
58. **Lee, C.-Y.**, Dutton, L., & Ram, G. (2010). The role of speaker gender identification in F0 height estimation from multispeaker, brief speech segments. *Journal of the Acoustical Society of America*, 128, 384-388.
59. **Lee, C.-Y.**, & Lee, Y.-F. (2010). Perception of musical pitch and lexical tones by Mandarin-speaking musicians. *Journal of the Acoustical Society of America*, 127, 481-490.
60. **Lee, C.-Y.**, Tao, L., & Bond, Z. S. (2010). Identification of acoustically modified Mandarin tones by non-native listeners. *Language and Speech*, 53, 217-243.
61. **Lee, C.-Y.**, Tao, L., & Bond, Z. S. (2010). Identification of multi-speaker Mandarin tones in noise by native and non-native listeners. *Speech Communication*, 52, 900-910.
62. Leon, C., Oh, H.-J., **Rana, S.** (In press). A purposeful dynamic stretching routine for distance running athletes and coaches. *Strategies*.
63. Li, X. & **Jeng, F.-C.** (2010). Noise tolerance in human frequency-following responses to voice pitch [Express Letters]. *Journal of the Acoustical Society of America*, 129(1), EL21-EL26.
64. List, E. O., Sackmann-Sala, L., **Berryman, D. E.**, Funk, K., Kelder, B., Gosney, E. S., Okada, S., Ding, J., Cruz-Topete, D., & Kopchick, J. J. (2010, December 1) Endocrine parameters and phenotypes of the growth hormone receptor gene disrupted (GHR^{-/-}) mouse. *Endo Reviews*. [Epub ahead of print.] doi: 10.1210/er.2010-0009

65. LoBiondo-Wood, G., **Rose-Grippa, M.**, Haber, J., & Berry, C., & Yost, J. (2010). *Study guide to accompany nursing research: Critical appraisal and utilization* (7th ed.). New York: Mosby, Volve Learning System.
66. Malek, M. H., Coburn, J. W., York, R., Ng, J., & **Rana, S.R.** (2010). Comparison of MMG sensors during incremental cycle ergometry for the quadriceps femoris. *Muscle & Nerve*, *42*, 394-400.
67. **Manoogian, M. M.**, Harter, L. M., & **Denham, S. A.** (2010). The storied nature of health legacies in the familial experience of type 2 diabetes. *Journal of Family Communication*, *10*, 1-17.
68. Manoogian, M. M., **Jurich, J. A.**, & Richards, L. N. (In press). Feminist participatory research: Ethical dilemmas in our research journeys with women in rural, low income families. In L. M. Harter, J. Hamel-Lambert, & J. L. Millesen (Eds.), *Participatory partnerships for social action and research*. Dubuque, IA: Kendall Hunt Publishing.
69. **Marinellie, S. A.** (2010). Improving children's formal definitions: A feasibility study. *Child Language Teaching and Therapy*, *26*(1), 23-37.
70. **Marinellie, S. A.** (2010). The understanding of definitions in school age children: The relation of inference and syntactic awareness. *Journal of Psycholinguistic Research*, *39*, 179-197.
71. **McCarthy, J.W.**, Cooley, J., & **Benigno, J. P.** (2010). Integrating music into small-group book reading activities increases the engagement of students with autism. *Evidence-Based Communication Assessment and Intervention*, *4*(2), 83-87.
72. **McCarthy, J. W.**, Donofrio-Horwitz, L. M., & Smucker, L. M. D. (2010). The effects of reading personal narratives written by an individual who uses AAC on the attitudes of pre-professionals in business. *Augmentative and Alternative Communication*, *26*(2), 61-74.
73. **McCarthy, J. W.**, Smith, J. L., & DeLuca, D. (2010). Using online discussion boards with large and small groups to enhance learning of assistive technology. *Journal of Computing in Higher Education*, *22*(9), 96-113.
74. McGinley, M., Hoffman, R. L., **Russ, D. W.**, **Thomas, J. S.**, & Clark, B. C. (2010) Older adults exhibit more intracortical inhibition and less intracortical facilitation than young adults. *Experimental Gerontology*, *45*(9), 671-678.
75. **Metzler-Wilson, K.** (2010). *S100A1 competes with calmodulin for calmodulin binding proteins, CaV1.2 & SK2 channels* [Dissertation]. Philadelphia, PA: Thomas Jefferson University.
76. **Miller, C. & Leadingham, C.** (2010). Enhancing LPN to RN transitions through comprehensive mentoring and remediation. *Teaching and Learning in Nursing*, *5*(4), 149-153.
77. **Miller, C., Leadingham, C.**, Mckean, J., & McManus, C. (2010). Forensic nursing: An emerging competency for contemporary practice. *Teaching and Learning in Nursing*, *5*(3), 98-103.

78. **Miller, C., Leadingham, C., & Vance, R.** (2010). Utilizing human patient simulators (HPS) to meet learning objectives across concurrent core nursing courses. *College Teaching and Learning Journal*, 7(1), 37-44.
79. Minifie, F. D., Robey, R. R., **Horner, J.**, Ingham, J., Lansing, C., McCartney, J. H., Alldredge, E.-E., Slater, S. C., & Moss, S. E. (2010, November 16). Responsible conduct of research in communication sciences and disorders: Faculty and student perceptions. *Journal of Speech, Language and Hearing Research*. [Epub ahead of print.] doi: 10.1044/1092-4388(2010/09-0262)
80. **Montgomery, J.**, Magimairaj, B., & Finney, M. (2010). Working memory and specific language impairment: An update on the relation and perspectives on assessment and treatment. *American Journal of Speech-Language Pathology*, 19, 78-94.
81. Montgomery, K., **Ryan, T.J., Krause, A., & Starkey, C.** (2010). Assessment of athletic health care facility surfaces for MRSA in the secondary school setting. *Journal of Environmental Health*, 72(6), 8-11.
82. Nagaraj, N. K., **DiGiovanni, J. J., & Ries, D. T.** (2010, August 10). The relative contribution of adaptation and temporal integration in forward masking. *Proceedings of Meetings on Acoustics*, 9, 1-8. doi:10.1121/1.3481455
83. Nelson, A. J., Juraska, J. M., **Ragan, B. G., & Iwamoto, G. A.** (2010). Effects of exercise training on dendritic morphology in the cardiorespiratory and locomotor centers of the mature rat brain. *Journal of Applied Physiology*, 108(6), 1582-1590.
84. Oommen, E., **Kim, Y., & McCullough, G. H.** (In press). Stage transition and laryngeal closure in poststroke patients with dysphagia. *Dysphagia*.
85. Park, T., **Kim, Y., Ko, D., & McCullough, G. H.** (2010), Initiation and duration of laryngeal closure during the pharyngeal swallow in patients poststroke. *Dysphagia*, 25, 177-182.
86. **Pennington, N.** (2010). Head injuries in children. *The Journal of School Nursing*, 26(1), 26-32. doi: 10.1177/1059840509341881
87. **Pennington, N., Johnson, M., Delaney, E., & Blankenship, M.** (2010). Energy drinks: a new health hazard for adolescents. *The Journal of School Nursing*, 26(5), 352-359.
88. **Pope, N. D., & Kang, B.** (2010). Residential relocation in late life: A comparison of proactive and reactive moves. *Journal of Housing for the Elderly*, 24(2), 193-207.
89. **Pope, N. D., & Kang, B.** (In press). Social Work students' attitude about working with involuntary clients. *Journal of Teaching in Social Work*.
90. **Pope, N. D., Kolomer, S., & Glass, A. P.** (In press). How women in late midlife become caregivers for their aging parents. *Journal of Women and Aging*.
91. **Ries, D., Hamilton, T. R., & Grossmann, A. J.** (2010). The effects of intervening interference on working memory for sound location as a function of inter-comparison interval. *Hearing Research*, 268, 227-233.

92. **Russ, D. W.**, Scott, W. B., Oursler, K. K., & Salter-King, J. (2010). Paradoxical contractile properties in the knee extensors of HIV-infected men treated with antiretroviral therapy. *Applied Physiology Nutrition & Metabolism*, 35(5), 713-717.
93. **Ryan, T. J.** (2010). Assessment and Efficacy of an M-Learning Course in Industrial Hygiene and Occupational Safety. In M. Iskander, V. Kapila, M. A. Karim (Eds.), *Technological developments in education and automation*. The Netherlands: Springer.
94. Schwartz, F. L., **Denham, S.**, Heh, V., Wapner, A., & Shubrook, J. (2010). Lifestyle and behavior experiences of children and adolescents with type 1 diabetes in school: Survey of children, parents, and schools. *Diabetes Spectrum*, 23, 47-55.
95. Scott, M., Clark, A., **Andreano, M.** & Ivey, L. (In press). Safe handling of patients: What works. *American Nurse Today*.
96. **Sergeev, A. V.** (2010). Persistent organic pollutants and atherosclerosis: Are there sufficient facts to draw the ultimate conclusion? *Kardiologija (Cardiology)*, 50(4), 50-54.
97. **Sergeev, A. V.** (2010). The health care reform in the USA and applicability of the American experience in Russia. In L. A. Bokeria (Ed.), *Atlas of health in Russia* (pp. 245-252). Russia: Moscow.
98. **Sergeev, A. V.**, & Carpenter, D. O. (2010). Exposure to persistent organic pollutants increases hospitalization rates for myocardial infarction with comorbid hypertension. *Primary Prevention Insights*, 2, 1-9.
99. **Sergeev, A. V.**, & Carpenter, D. O. (2010, October 12). Geospatial patterns of hospitalization rates for stroke with comorbid hypertension in relation to environmental sources of persistent organic pollutants: Results from a 12-year population-based study. *Environmental Science and Pollution Research*. [Epub ahead of print.] doi: 10.1007/s11356-010-0399-7
100. **Sergeev, A. V.**, & Carpenter, D. O. (2010). Increased hospitalizations for ischemic stroke with comorbid diabetes and residential proximity to sources of organic pollutants: A 12-year population-based study. *Neuroepidemiology*, 35(3), 196-201.
101. **Sergeev, A. V.**, & Carpenter, D. O. (2010). Residential proximity to environmental sources of persistent organic pollutants and first-time hospitalizations for myocardial infarction with comorbid diabetes mellitus: A 12-year population-based study. *International Journal of Occupational Medicine and Environmental Health*, 23(1), 5-13.
102. Sha, D., France, C. R., **Thomas, J. S.** (2010). Mechanical energy expenditures and movement efficiency in full body reaching movements. *Journal of Applied Biomechanics*, 26(1), 32-44.
103. Shacham, E., Reece, M., Ong'or, W., Omollo, O., & **Basta, T.** (2010). A cross-cultural comparison of psychological distress among individuals living with HIV in Atlanta, Georgia and Eldoret, Kenya. *Journal of International Association of Physicians in AIDS Care*, 9(3), 162-169.
104. Simoes, G., Moreira, S., **Kushnick, M.**, Simoes, H., & Campbell, C. (2010). Post-resistance exercise blood pressure reduction is influenced by exercise intensity in type-2 diabetics and non-diabetic individuals. *Journal of Strength and Conditioning Research*, 24(5), 1277-84.

105. **Spjeldnes, S.**, Koeske, G., & Sales, E. (2010). Teacher support as a buffer between interparental conflict and child social skills. *Early Child Development and Care*, 180(3), 335–346. doi:10.1080/03004430801908327
106. Stanforth, B., **Krause, A.**, **Starkey, C.**, **Ryan, T. J.** (2010). Prevalence of community-associated Methicillin-resistant staphylococcus aureus in high school wrestling environments. *Journal of Environmental Health*, 72(6), 12-16.
107. **Starkey, C.** (Consulting Ed., Athletic Training, Sports Medicine, Orthopedics, Rehabilitation, Computers, and Miscellaneous Section). (In press). *Taber's cyclopedic medical dictionary* (22nd ed.). Philadelphia, PA: FA Davis.
108. **Thomas, J. S.**, Ross, A., **Russ, D. W.**, & Clark, B. C. (2010). Time to task failure of the trunk extensor muscles differs with load type. *Journal of Motor Behavior*, 43(1), 27-29.
109. Wapner, A., Bianco, J., Lustic, M., **Kushnick, M.**, **Brannan, G.**, Shubrook, J. (2010). TAKE ACTION: A community-based approach to childhood obesity. *Childhood Obesity*, 6(4), 270-276.
110. Warren, A., & **Denham, S. A.** (2010). Relationships between formalized preceptor orientation and student outcomes. *Teaching and Learning in Nursing*, 5(1), 4-11.
111. Weckman, G., **Paschold, H.**, Dowler, J., Whiting II, H., Young, W. (2010). Using neural networks with limited data to estimate manufacturing cost. *Journal of Industrial and Systems Engineering*, 3(4), 257-274.
112. Wilson, M. G., **Basta, T.**, Hoffman, E. DeJoy, D., Vandenberg, R., & Dishman, R. K. (2010). Do intervention fidelity and dose influence outcomes? Results from the Move To Improve worksite physical activity program. *Health Education Research*, 25(2), 294-305.
113. Windsor, J., **Benigno, J. P.**, Wing, C., Carroll, P. J., Koga, S. F., Nelson, C. A., Fox, N. A., & Zeanah, C. H. (in press). *Effects of foster care on young children's language learning*. *Child Development*.
114. Zhou, N., **Xu, L.**, & Lee, C.-Y. (2010). The effects of basal spectral shift on consonant confusion. *Journal of the Acoustical Society of America*, 128, 401-409.
115. Zhou, N., Xu, L., & **Lee, C.-Y.** (2010). The effects of frequency-place shift on consonant confusion in cochlear implant simulation. *Journal of the Acoustical Society of America*, 128, 401-409.

Presentations in Calendar Year 2010

(Includes platform and poster presentations, published abstracts of platform and poster presentations; workshops; and, as well as invited/keynote speeches at state, regional, national, and international conferences).

1. Austin, A., Patterson, S., **Kushnick, M.**, Knutson, M., & McGlynn, M. (2010, March). *Relationships between resting lipids and cardiovascular reactivity over time* [Abstract]. Paper session presented at the American Psychosomatic Society's Conference, Portland, OR. *Psychosomatic Medicine*, 72, 2010.
2. Anjum, J., & **Hallowell, B.** (2010, November). *Need for novel methods to capture priming effects in adults*. Paper session presented at the Annual Convention of the American Speech-Language-Hearing Association, Philadelphia, PA.
3. Anjum, J., Kumar, V., & **Hallowell, B.** (2010, May). *Research and clinical interactions with people from India with aphasia: A primer for North Americans*. Paper session presented at the Clinical Aphasiology Conference, Isle of Palms, SC.
4. **Andreano, M. A.** (2010, October). *Implementing nursing research in a non-academic rural hospital*. Paper session presented at the North Carolina Nurses Association Annual Convention, Winston-Salem, NC.
5. **Basta, T.** (2010, July). *HIV-related stigma and knowledge among individuals living in rural Appalachian Ohio*. Paper session presented at the World AIDS Conference, Vienna, Austria.
6. **Basta, T.**, & Barman, C. R. (2010, March). *An application of the "learning cycle" in health education*. Paper session presented at the American Alliance for Health, Physical Education, Recreation and Dance Annual's Meeting, Indianapolis, IN.
7. **Basta, T.**, Sherman, K., Clesi, M., & Ressa, H. (2010, July). *Integrated family planning: An intervention designed to increase integrated HIV testing in family planning clinics in the Midwestern United States*. Paper session presented at the World AIDS Conference, Vienna, Austria.
8. **Basta, T.**, & Vance, R. (2010, October). *HIV-related knowledge among individuals living in rural Appalachian Ohio* [Abstract]. Paper session presented at the annual meeting of the American Public Health Association, Denver, CO. **This abstract received Honorable Mention for the Excellence in Abstract Submission among New Investigators.**
9. **Berryman, D. E.**, Lubbers, E., List E. O., & Kopchick, J. J. (2010, June). *Total and high molecular weight (HMW) adiponectin levels in mice with altered GH signaling*. Paper session presented at the 92nd annual meeting of the Endocrine Society, San Diego, CA.
10. Blischak, J. D., List, E.O., **Berryman, D. E.**, Shen, K., Wright-Piekarski, J., Zacharias, A., Kennedy, A., Grier, M., Davis, C., & Kopchick, J. J. (2010, June). *Changes in hepatic gene expression following GH or IGF-1 treatments in mice with diet-induced nonalcoholic fatty liver disease*. Paper session presented at the 92nd annual meeting of Endocrine Society, San Diego,

CA.

11. **Bowen, M.** (2010, July). *Evidence based mentoring of family nurse practitioner students in rural underserved Appalachia*. Paper session presented at the 21st STTI International Nursing Research Congress, Orlando, FL.
12. **Bowen, M.** (2010, April). *Implementation of peer mentoring in rural underserved Appalachia in a culturally sensitive advance practice nursing curriculum*. Paper session presented at the 36th annual meeting of the National Organization of Nurse Practitioner Faculties, Washington, DC.
13. **Brannan, R. G.** (2010, July). *Effect of N-acetyl-cysteine on liposomal and muscle model oxidation induced by ROS and RNS*. Poster session presented at the annual meeting of the Institute of Food Technologists, Chicago, IL.
14. Brown, K. A., & **Holben, D. H.** (2010, November). *Development of an organic gardening workshop for registered dietitians, dietetic technicians registered, students, and community members in rural, Appalachian Ohio* [Abstract]. Paper session presented at the 2010 American Dietetics Association Food and Nutrition Conference & Expo, Boston, MA. *Journal of the American Dietetics Association*, 110, A102.
15. Carlson, E. A., Andrews, A., Rodriguez, C., & **Krause, B. A.** (2010, May). *Neuromuscular responses to a ten day controlled ankle immobilization*. Poster session presented at the Ohio Athletic Trainers' Association, Dublin, OH.
16. Chen, J.-Y., Su, J.-J., **Lee, C.-Y.**, & Lee, Y.-F. (2010, October). *Chinese-English bilinguals' sensitivity to the time of an action event is related to the extent of their experience with English*. Paper session presented at the Donostia Workshop on Neurobilingualism, Donostia-San Sebastián, Spain.
17. **Chleboun, G. S.**, Murray, H., Root, K. J., Amway, A. J., & Hill, J. G. (2010, August). *Measurement of segmental lumbar spine flexion and extension using ultrasound imaging* Paper session presented at the Mechanical Diagnosis and Therapy Conference of the Americas, Baltimore, MD.
18. Chou, M. -S., Chung, H. -K., Wang, C. -Y., **Jeng, F. -C.**, Lin, C. D., & Tsai, M. -H. (2010, November). *Early maturation of frequency-following response to voice pitch in normal-hearing infants* [Abstract]. Paper presented at the 89th annual meeting of the Taiwan Otolaryngological Society. Taipei, Taiwan. (Abstract #B15, p. 139). **This presentation received "Outstanding Research Award" at the meeting.**
19. Clark, B. C., McGinley, M. P., Hoffman, R. L., Thomas, J. S., & **Russ, D. W.** (2010, May). *Age-related differences in cortical excitability* [Abstract]. *Medicine and Science in Sports Exercise*, 42(5), 629.
20. Clark, B. C., Taylor, J. L., Dearth, D. J., Hoffman, R. L., & **Thomas, J. S.** (2010, February). *State-dependent adaptations in cortical excitability following 3 weeks of cast immobilization* [Abstract]. Paper session presented at the Combined Sections Meeting of the American Physical Therapy Association, San Diego, CA.

21. **Cox, A., & Andreano M.A.** (2010, April). *Reclaiming time for the nurse informatics educator: Training super-users for nursing school faculty*. Poster session presented at the ANIA-Caring Annual International Conference, Boston, MA.
22. Crespo, R., **Denham, S. A.**, Barker, L., & Leib, R. (2010, April). An Appalachian community dissemination and evaluation project. Paper session presented to the Centers for Disease Control & Prevention Diabetes Translation Conference, Kansas City, MO.
23. Dalne, S., **Sindelar, B.**, & Cotton, J. (2010, August). Finite element simulation of a porcine temporomandibular joint. Paper session presented to the American Society of Biomechanics, Providence, RI.
24. Damron, L. A., Dearth, D. J., **Thomas, J. S.**, Taylor, J. L., Hoffman, R. L., & Clark. (2010, February). *Cast immobilization decreases central activation, increases spinal excitability and reduces la synaptic transmission* [Abstract]. Paper session presented at the Combined Sections Meeting of the American Physical Therapy Association, San Diego, CA.
25. **Denham, S. A.** (2001, April). *Addressing the diabetes problem in Appalachia—A population in need*. Panel session presented to the Centers for Disease Control & Prevention Diabetes Translation Conference, Kansas City, MO.
26. **Denham, S. A.** (2010, April). *Nursing practice in the 21st century*. Invited paper presented to the Minnesota State University Mankato School of Nursing, Mu Lambda Chapter, Mankato, MN.
27. **Denham, S. A.** (2010, May). *Thinking Appalachia: Think family-focused care*. Invited paper presented at the Holzer Hospital Certification Awards Dinner, Gallipolis, OH.
28. **Denham, S.A.** (2010, August). *Dissemination and evaluation of a culturally sensitive diabetes program and toolkit*. Paper session presented to the American Association of Diabetes Educators, San Antonio, TX.
29. **Denham, S. A.** (2010, September; October). *Unique health care needs for regional people*. Invited paper presented at Nationwide Children’s Hospital, Columbus, OH.
30. **Denham, S. A.** (2010, October). *Diabetes: A family matter*. Invited paper presented at the Appalachian Coalition Meeting, Abingdon, VA.
31. **Denham, S. A.** (2010, October). *Diabetes: A family matter*. Invited paper presented at the West Virginia University 10th Diabetes Symposium, Charleston, WV.
32. **Denham, S. A.** (2010, November). *Diabetes in Appalachia: A family matter*. Invited paper presented at the Women’s Health Conference, Chillicothe, OH.
33. **Denham, S. A.** (2010, December). *Diabetes: A problem for Appalachia*. Invited paper presented at the YMCA Diabetes Conference, Chillicothe, OH.

34. Dickman, B. M., **Jeng, F.-C., Hallowell, M. B., & Sergeev, A.** (2010, March). *Glycemic excursions correlate to auditory P300 potentials in patients with type 1 diabetes mellitus* [Abstract]. Paper session presented at the annual meeting of the American Auditory Society, Scottsdale, AZ. *Abstracts of American Auditory Society Annual Meeting*, 17, 53.
35. **DiGiovanni, J. J.**, Prewitt, J. M., & Moates, D. R. (2010, November). *The relative contribution to speech intelligibility from consonants and vowels using synthesized and naturally spoken sentences*. Paper session presented at the 2nd Pan-American/Iberian Meeting on Acoustics, Cancun, Mexico.
36. **DiGiovanni, J. J.**, Rutledge, J. C., & Umble, C. S. (2010, April). *Phonemically-targeted speech processing used in conjunction with combination compression and combination linear gain (Coliga) processing*. Paper session presented at Joint Meeting of the Acoustical Society of American and NOISE-CON, Baltimore, MD.
37. Dominguese, D., & **Krause, B. A.** (2010, May). *Musculoskeletal clinical knowledge among graduate athletic training students*. Poster session presented at the Ohio Athletic Trainers' Association, Dublin, OH.
38. Dominguese, D. J., **Seegmiller, J. G., Clevidence, M. W., & Krause, B. A.** (2010, May). *A single session of repeated bouts of muscle fatigue caused alterations in peak ground reaction force during 60 cm drop landing*. Poster session presented at the annual meeting of American College of Sports Medicine, Baltimore, MD.
39. Galletta, E., **Hallowell, B.**, Coslett, B., & Barrett, A. (2010, November). *Aphasia evaluation and intervention: Spatial neglect considerations*. Paper session presented at the annual convention of the Ohio Speech-Language-Hearing Association, Columbus, OH.
40. Grossmann, A., **Ries, D. T.**, & Hamilton, T. (2010, April). *The effects of intervening interference on working memory for sound location*. Paper session presented at the Acoustical Society of America and Noise-Con 2010, Baltimore, MD.
41. **Haberkorn, J.**, & Gilmore, T. (2010, March). *Globalization and Native American tribal governance: A case study of the Lumbee Indians of North Carolina*. Paper session presented at the 40th annual meeting of the Urban Affairs Association, Honolulu, HI.
42. **Haberkorn, J.**, & Justice, J. (2010, April). *Can those who teach also do diversity?* Paper session presented at the American Society of Public Administration, San Jose, CA.
43. **Hallowell, B.** (2010, January). *Addressing confounding factors in the assessment of language abilities in individuals with neurological disorders*. Paper session presented at the annual conference of the Indian Speech and Hearing Association, Bangalore, India.
44. **Hallowell, B.** (2010, January). *International collaboration in research on aphasia and related disorders*. Paper session presented at the National Institute of Mental Health and Neurosciences, Bangalore, India.
45. **Hallowell, B.** (2010, October). *Workshop I: Career development for research and creative activity workshop series for exceptional faculty*. Paper session presented at the Flora Stone Mather Center for Women, Case Western Reserve University, Cleveland, OH.

46. **Hallowell, B.** (2010, December). *Acquired neurogenic communication disorders in adults*. Paper session presented at the Vietnam National University of Social Sciences and Humanities, Ho Chi Minh City, Vietnam.
47. **Hallowell, B.** (2010, December). *US-Malaysian collaborations in communication sciences and disorders and other health-related research*. Paper session presented at the University Kabangsaan Malaysia, Kuala Lumpur, Malaysia.
48. **Hallowell, B.** (2010, December). *US-Malaysian collaborations in gerontology*. Paper session presented at the University Tecknologi MARA, Kuala Lumpur, Malaysia.
49. **Hallowell, B.** (2010, December). *US-Malaysian collaborations in health-related research and faculty development*. Paper session presented at the Malaysian Ministry of Higher Education, Kuala Lumpur, Malaysia.
50. **Hallowell, B.** (2010, December). *US-Vietnamese collaborations in health-related research and faculty development*. Paper session presented at the Vietnam National University of Social Sciences and Humanities, Ho Chi Minh City, Vietnam.
51. **Hallowell, B.,** Crombie, P., Roche, L., Vargas, J., & Boyer, E. (2010, November). *Enhancing education on acquired neurogenic communication disorders through personal narratives*. Paper session presented at the annual convention of the American Speech-Language-Hearing Association, Philadelphia, PA.
52. **Holben, D. H.** (2010, April). *A sustainable, local food system*. Paper session presented at the ECOhio Garden Project Organic Gardening Workshop, Athens, OH.
53. **Holben, D. H.** (2010, November). *Dietetics as a career choice attracting and keeping male interest*. Paper session presented at the American Dietetics Association Food and Nutrition Conference and Expo, Boston, MA.
54. **Holben, D. H.,** Wang, Y., & Taylor, C. A. (2010, November). *Differences in rates of obesity and central adiposity in U.S. adolescents by food security status* [Abstract]. Paper session presented at the Food and Nutrition Conference and Expo, American Dietetics Association, Boston, MA. *Journal of the American Dietetics Association, 110, A109.*
55. Hopkins, L. C., & **Holben, D. H.** (2010, April). *Community gardeners in rural Appalachian Ohio: A pilot study*. Paper session presented at the Ohio Dietetic Association Annual Meeting, Columbus, OH.
56. Hopkins, L. C., & **Holben, D. H.** (2010, November). *Community gardening is positively associated with improved produce intake and decreased food spending among rural food insecure households* [Abstract]. Paper session presented at the 2010 Food and Nutrition Conference and Expo, American Dietetics Association, Boston, MA. *Journal of the American Dietetics Association, 110, A68.*
57. **Howe, C. A.** (2010, December). *Empirically-developed physical activity interventions for the prevention of pediatric obesity*. Invited paper session presented at the 2nd International Joint Meeting on Obesity Research, Edison Biotechnical Institute, Ohio University, Athens, OH.

58. **Howe, C. A.**, Freedson, P. S., Feldman, H. A., & Osganian, S. K. (2010, May). *Children's simulated recess program: Measures of energy cost and enjoyment* [Abstract]. Poster session presented at national conference of the American College of Sports Medicine. *Medicine and Science in Sports and Exercise*, 42(5), 1893.
59. **Howman, J. L.**, Pacheco, D., & Hutyera, M. (2010, February). *Effects of anonymity on student ratings of clinical instructors*. Poster session presented at the Combined Sections Meeting of the American Physical Therapy Association, San Diego, CA.
60. Hu, J., & **Jeng, F. -C.** (2010, March). *Frequency-following responses to voice pitch in Chinese neonates* [Abstract]. Abstracts of American Auditory Society Annual Meeting, page 57 (#35), Scottsdale, AZ.
61. Ivanova, M. V., & **Hallowell, B.** (2010, May). *An eye-tracking method to investigate working memory in individuals with and without aphasia*. Paper session presented at the Clinical Aphasiology Conference, Isle of Palms, SC.
62. Ivanova, M. V., **Hallowell, B.**, & Shklovsky, V.M. (2010, June). *Assessment of working memory using an eye-tracking method: Data from persons with and without aphasia*. Paper session presented at the Fourth Biennial Conference on Cognitive Science, Tomsk, Russia.
63. **Jeng, F. -C.**, Lin, C. -D., Wang, C. -Y., Hu, J., & **Li, X.** (2010, March). *Frequency-following responses to voice pitch: How many sweeps are enough* [Abstract]? *Abstracts of American Auditory Society Annual Meeting*, page 58 (#37), Scottsdale, Arizona.
64. Johnson, M. E. Kimberly, A. F., & **Sindelar, B. J.** (2010, March). *Material properties of pig lateral TMJ capsule under tensile loading* [Abstract]. Poster session presented to 39th annual meeting of the American Association for Dental Research, Washington DC. *Journal of Dental Research*, 89(Spec Iss A), 1152.
65. Johnson, M. E., McCallum, A., Sabo, B., & **Thomas, J. S.** (2010, February). *Does hip flexibility influence lumbar spine and hip joint excursions during forward bending and reaching tasks*. Paper session presented at the Combined Sections Meeting of the American Physical Therapy Association, San Diego, CA.
66. **Johnson, M.** (2010, March). *The return of study hall: The influence of teacher/student interaction outside the classroom on student academic success*. Poster session presented at the Ohio League of Nurses Conference, Columbus, OH.
67. **Johnson, M.** (2010, April). *Development of team skills in novice nurses through an athletic coaching model*. Poster session presented at the Ohio Coalition for Associate Degree Nurse Educators Conference, Columbus, OH.
68. **Johnson, M.** (2010, May). *Pharmacology update on common pediatric conditions: Allergies, asthma, acne and a nasty bug called MRSA. Are you using current evidence-based guidelines in your practice?*. Paper session presented at the WV Advanced Nursing Practice Conference, Huntington, WV.

69. **Johnson, M.** (2010, November). *The negative effects of energy drinks and performance enhancing supplements in children and teens*. Paper session presented at the 16th Annual Safe and Healthy Schools and Students Conference, Louisville, KY.
70. **Johnson, M.** (2010, June-July). *The negative effects of energy drinks and performance enhancing supplements in children and teens*. Paper session presented at the 42nd annual conference of the National Association of School Nurses, Chicago, IL.
71. **Johnson, M.,** & Blankenship, M. B. (2010, March). *Drowning in a sea of students? Innovative teaching strategies for large student groups*. Paper session presented at the Ohio League of Nurses Conference, Columbus, OH.
72. **Jurich, J.,** & Myers-Bowman, K. (2010, November). *How twilight facilitates mother-daughter discussion about relationships*. Poster session presented at the annual meeting of the National Council on Family Relations, Minneapolis, MN.
73. Keller, D. C., Nguyen, L., Jobe, L., & **Sindelar, B. J.** (2010, March). *Preliminary data on periodontal disease treatment using topical oxidizing agents* [Abstract]. Poster session presented to 39th annual meeting of the American Association for Dental Research, Washington DC. *Journal of Dental Research*, 89(Spec Iss A), 1151.
74. **Kim, Y.** (2010, September). *Dysphagia 101*. Invited instructional course presented at the 4th World Voice Congress, Seoul, Korea.
75. **Kim, Y.** (2010, September). *Temporal measurement of triggering pharyngeal swallowing in poststroke patients*. Paper session presented at the 4th World Voice Congress, Seoul, Korea.
76. **Kim, Y.,** Oommen, E., & Park, T. (2010, November). *Upper esophageal sphincter opening in poststroke patients*. Poster session presented at the annual convention of the American Speech-Language-Hearing Association, Philadelphia, PA.
77. **Kim, Y.,** Oommen, E., & Park, T. (2010, September). *Videofluoroscopic examination of swallowing: Clinical implication of temporal and biomechanical measurements*. Invited panel session presented at the 4th World Voice Congress, Seoul, Korea.
78. Knight, M., **Holben, D. H.,** Murray, T., & Shubrook, J. (2010, November). *A multi-disciplinary lifestyle intervention program decreases cardiovascular disease risk in adults after 100 days of treatment*. Paper session presented at the American Dietetics Association Food and Nutrition Conference and Expo, Boston, MA.
79. Knight, M., **Holben, D. H.,** Murray, T., & Shubrook, J. (2010, November). *A multi-disciplinary lifestyle intervention program decreases cardiovascular disease risk in adults after 100 days of treatment* [Abstract]. Paper presented at the American Dietetics Association Food and Nutrition Conference and Expo, Boston, MA. *Journal of the American Dietetic Association*, 110, A89.
80. Knutson, M., McGlynn, M., Timothy, A., & **Kushnick, M.** (2010, June). *Postprandial lipemia and aerobic fitness status* [Abstract]. Paper session presented at the annual meeting of the American College of Sports Medicine's, Baltimore, MD. *Medicine and Science in Sports and Exercise*, 42(5), 532.

81. **Krause, B. A.**, & Curfman, S. (2010, May). *Athletic trainers' perceived knowledge and competence with mental health conditions and issues*. Poster session presented at the Ohio Athletic Trainers' Association, Dublin, OH.
82. **Kushnick, M.**, Guiler, M., Knutson, M., McGlynn, M., Manini, T., Hoffman, R., & Clark, B. (2010, June). *Fibrinogen, D-dimer and tPA antigen concentrations following acute and chronic blood flow restricted resistance exercise* [Abstract]. Paper session presented at the American College of Sports Medicine's annual meeting, Baltimore, MD. *Medicine and Science in Sports and Exercise*, 42(5), 740-741.
83. **Kushnick, M.**, Kruse, N., Barr, M., Barta, B., Galli, D., Kaya, R., Knutson, M., & Wilson, M. (2010, October). *Substrate utilization during recovery from exercise after ingestion of a carbohydrate meal* [Abstract]. Paper session presented at the 2010 regional conference of the Midwest American College of Sports Medicine, Indianapolis, IN. *Proceedings of the Midwest Chapter of the American College of Sports Medicine Program*; 2010, 28.
84. **Lee, M.** (2010, June). *What do we need for "signature pedagogy" in field education?*. Paper session presented at the 6th Interdisciplinary Clinical Supervision Conference, Garden City, NY.
85. **Lee, M.** (2010, October). *Anger management skills as on-off switch in school problems*. Poster session presented at the 56th annual program meeting of the Council on Social Work Education, Portland, OR.
86. Li, X., & **Jeng, F. -C.** (2010, March). *Effects of broad-band noise on frequency-following responses to voice pitch* [Abstract]. Paper session presented at the annual meeting of the American Auditory Society, Scottsdale, AZ. *Proceedings of the American Auditory Society*, page 61 (#53).
87. List, E. O., **Berryman, D. E.**, Bower, B., Blischak, J. D., Wright-Piekarski, J., Lubbers, E., Malgor, R., & Kopchick, J. J. (2010, June). *The effects of GH, IGF-1 or combined GH/IGF-1 therapies on type 2 diabetes and nonalcoholic fatty liver disease*. Paper session presented at the 92nd annual meeting of the Endocrine Society's, San Diego, CA.
88. List, E. O., Wright-Piekarski, J., **Berryman, D. E.**, & Kopchick, J. J. (2010). *The effects of diet cycling on longevity*. Paper session presented at the annual meeting of the American Society of Nutrition, Anaheim, CA.
89. Loucks, A. B., Bowman, L., **Clevidence, M. W.**, Dominguese, D. J., Benseler, J. S., Daniher, L. A., & Hayes, R. M. (2010, June). *Induction of tibial marrow edema by exercise and low energy availability in young men*. Paper session presented at the 92nd annual meeting of the Endocrine Society, San Diego, CA.
90. Lubbers, E., Miles, D. B., List, E. O., & Kopchick, J. J. (2010). *Total and high molecular weight adiponectin levels in mice with altered GH signaling*. Paper session presented at annual meeting of the American Society of Nutrition, Anaheim, CA.
91. Madden, B., Sykes, C., Swanton, J., Wines, A., Zyla, L., Thomas, J. S., & **Chleboun, G. S.** (2010, February). *The effect of resistance training on biceps femoris fascicle length*. Paper session presented at the Combined Sections Meeting of the American Physical Therapy Association, San Diego, CA.

92. **Marinellie, S. A.** (2010, November). *School-age children's knowledge and awareness of morphologically complex words*. Poster session presented at the annual conference of the American Speech-Language-Hearing Association, Philadelphia, PA.
93. McCallum, A., Johnson, E., Sabo, B., Motter, S., & **Thomas, J. S.** (2010, February). *The effect of initial posture on the performance of multi-joint reaching tasks: A comparison of joint excursions between individuals with and without chronic low back pain*. Paper session presented at the Combined Sections Meeting of the American Physical Therapy Association, San Diego, CA.
94. **McCarthy, J.** (2010, November). *Using electronic discussion boards to supplement in-class graduate SLP instruction*. Paper session presented at the annual meeting of the American Speech-Language-Hearing Association, Philadelphia, PA.
95. **McCarthy, J., Ries, D., & DiGiovanni, J.** (2010, November). *Redesigning scanning with animation and sound cues*. Paper session presented at the annual meeting of the American Speech-Language-Hearing Association, Philadelphia, PA.
96. **McCarthy, J.** & Smucker, L. (2010, July). *Changing attitudes toward individuals with complex communication needs*. Paper session presented at the biennial meeting of the International Society for Augmentative and Alternative Communication, Barcelona, Spain.
97. **McCarthy, J.,** Strauss, J., & Donofrio-Horwitz, L. (2010, July). *The use of animation in aided AAC displays*. Paper session presented at the biennial meeting of the International Society for Augmentative and Alternative Communication, Barcelona, Spain.
98. Miewald, C., **Holben, D. H.,** & Hall, P. V. (2010, May). *What difference does the good food box make? An examination of the role of a food box program on nutrition and food security*. Paper session presented at the conference of the Canadian Association for Food Studies, Montreal, Quebec, Canada.
99. Miller, C., Vance, R., & Leadingham, C. (2010, March). *Wireless headset technology enhances communication and workflow efficiency*. Paper session presented at Ohio League for Nursing Education Summit, Columbus, OH.
100. Moates, D. R., **Lee, C. -Y.,** & Bond, Z. S. (2010, June). *Feature distance effects in spoken word recognition*. Paper session presented at Mental Lexicon 7, Windsor, Ontario.
101. **Morrone,** (2010, February). *Environmental literacy and higher education curriculum. (invited panelist)*. Paper session presented at the Southwest Ohio Consortium on High Education, Dayton, OH.
102. **Morrone,** (2010, February). *Greening the curriculum*. Invited speaker at the Southwest Ohio Consortium on High Education, Dayton, OH.
103. **Morrone,** (2010, April). *Sustainability across campus: From facilities to curriculum*. Invited panelist at the University System of Ohio Sustainability Conference, Columbus, OH.

104. **Morrone**, (2010, May). *Environmental justice in Appalachia Ohio: Addressing cancer health disparities in Appalachia*. Invited panelist at the Ohio State University Research Seminar.
105. **Morrone**, (2010, September). *Creating a community vision at the Portsmouth gaseous diffusion plant*. Invited speaker at the Southeast Ohio Environmental Health Association, Portsmouth, OH.
106. Nagaraj, N., & **DiGiovanni, J. J.** (2010, April). *Relative contribution of adaptation and temporal integration to the forward masking phenomenon*. Paper session presented at the Joint Meeting of the Acoustical Society of American and NOISE-CON 2010, Baltimore, MD.
107. Oh, H.-J., & **Rana, S. R.** (2010, June). *Physical activity across body composition and sex in low income Mexican and white American youth* [Abstract]. *Medicine and Science in Sports and Exercise*, 42(5; suppl 1), 526.
108. Oommen, E., & **Kim, Y.** (2010, March). *Effects of bolus consistency and bolus volume on temporal measurements of pharyngeal swallowing in poststroke patients*. Poster session presented at the annual conference of the Dysphagia Research Society, San Diego, CA.
109. Parker, V., Kauffman, L., Penn, N., **Buchman, S.**, & McManus, C. (2010, April). *Use of simulation as a collaborative teaching method in an A.D. curriculum*. Poster session presented at the 26th annual conference of OOADN/OCADNEA: Evidenced Based Practices for Redesigning Your Nursing Curriculum, Columbus, OH. **This poster presentation won an award for Second Place.**
110. Parker, V., Kauffman, L., Penn, N., **Buchman, S.**, & McManus, C. (2010, March). *Use of simulation as a collaborative teaching method in an A.D. curriculum*. Paper session presented at Simulation in Healthcare: Where No One has Gone Before, Fort Lauderdale, FL.
111. **Paschold, H.** (2010, October). *Humans and vibration*. Paper session presented at the American Society of Safety Engineers Central Ohio Chapter monthly meeting, Pickerington, OH.
112. **Paschold, H.** (2010, June). *Knowledge gaps in whole-body vibration*. Paper session presented at the proceedings of the 3rd American Conference on Human Vibration, Iowa City, IA.
113. **Paschold, H.** (2010, March). *Occupational whole-body vibration*. Paper session presented at the Ohio Bureau of Worker Compensation–Ohio Safety Congress 2010, Columbus, OH.
114. **Paschold, H.** (2010, April). *Ethics for the safety profession*. Paper session presented at the Ohio Bureau of Worker Compensation–Ohio Safety Congress 2010, Columbus, OH.
115. **Pennington, J. N.** (2010, September). *DNP evidence-based change project: Preventing the negative health effects of energy drinks*. Paper session presented at the Chatham University, Pittsburgh, PA.
116. **Pennington, J. N.** (2010, June). *Energy drinks: A new health hazard for adolescents*. Paper session presented to the 42nd annual conference of the National Association of School Nurses, Chicago, IL.

117. **Pennington, J. N.** (2010, October). *Energy drink hazards: An evidence-based change project*. Paper session presented at the Kentucky Center for School Safety Annual Conference, Louisville, KY.
118. **Pennington, J. N.** (2010, May). *Improvisation in the classroom*. Paper session presented at the Teaching Professor Conference, Cambridge, MA.
119. **Pennington, J. N.** (2010, October). *Pediatric head injury protocols for school nurses*. Paper session presented at the Kentucky Association of School Nurses, Lexington, KY.
120. **Pennington, J. N.** (2010, March). *Study halls in associate degree nursing programs*. Poster session presented at the Ohio League for Nursing, Columbus, OH.
121. **Pennington, J. N.** (2010, April). *Using a team approach to teaching large groups in associate degree nursing programs*. Poster session presented at the Ohio Coalition for Associate Degree Nurse Educators, Columbus, OH.
122. Raffle, H., Ware, L., Ruhil, A., Hamel-Lambert, J., & **Denham, S. A.** (2010, November). *Predictors of successful diabetes self-management in Appalachia*. Paper session presented at the 138th annual conference of the American Public Health Association, Denver, CO.
123. **Ragan, B. G.**, & Dompier, T. P. (2010, June). *Readability statistics and the appropriateness of commonly used region specific outcomes surveys* [Abstract]. Paper session presented at the annual meeting and clinical symposium of the National Athletic Trainers' Association, Philadelphia, PA. *Journal of Athletic Training*, 45(3), S56.
124. **Rana, S.**, Guenther, E., **Bullard, S.**, & **Gilders, R.** (2010, July). *Prediction of one repetition maximum bench press from push-ups in college-aged females*. Poster session presented at the national conference of the National Strength and Conditioning Association, Orlando, FL.
125. Ressa, H., **Basta, T.**, Sherman, K., & Clesi, M. (2010, November). *Integrated family planning: An intervention designed to increase integrated HIV testing in family planning clinics*. Paper session presented at the annual meeting of the American Public Health Association, Denver, CO.
126. **Russ D. W.**, Grandy, J., Badenhop, M., Toma, K., & MacIntosh, S. (2010, May). *Force relaxation and calcium handling in aged skeletal muscle* [Abstract]. *Medicine and Science in Sports and Exercise* 42(5):580.
127. **Ryan, T. J.** (2010, June). *Community associated MRSA occurrence in S.E. Ohio high school athletic facilities*. Paper session presented at the 74th annual educational conference & exhibition of the National Environmental Health Association, Albuquerque, NM.
128. Sackmann, S. L., Munn, R. D., Lubbers, E. R., **Berryman, D. E.**, & Kopchick, J. J. (2010, June). *Subcutaneous adipose tissue displays major phenotypic and proteomic differences from intra-abdominal fat*. Paper session presented at the 92nd Annual Meeting of the Endocrine Society, San Diego, CA.

129. **Sergeev, A. V.** (2010, September). *Stroke mortality outside the stroke belt: Analysis of racial and rural-urban disparities*. Paper session presented at the annual meeting of the American College of Epidemiology (ACE), San Francisco, CA. *Annals of Epidemiology*, 20(9), 709. (Abstract)
130. **Sergeev, A. V.**, & Carpenter, D.O. (2010, March). *Metabolic syndrome and environmental exposure to organic compounds: Can the link be explained racial disparities?* Paper session presented at the American Heart Association (AHA) Joint Conference: the 50th Cardiovascular Disease and Prevention & Nutrition, Physical Activity, and Metabolism Conference, San Francisco, CA.
131. Simon, J. E., **Krause, B. A.**, **Rana, S.**, & Dominguese, D. (2010, May). *Mechanomyography and electromyography responses during single-leg hopping in participants with functional ankle instability*. Poster session presented at the Ohio Athletic Trainers' Association, Dublin, OH.
132. Snook, E. M., & **Ragan, B. G.** (2010, June). *Development of a Rasch-based ambulation symptom scale*. Paper session presented at the annual meeting of the 2010 Consortium of Multiple Sclerosis Centers, San Antonio, TX.
133. Snook, E. M., & **Ragan, B. G.** (2010, June). *Validation of the accuracy of the symptom inventory short-form*. Paper session presented at the 2010 ACTRIMS meeting, San Antonio, TX.
134. Snook, E. M., Scott, C. B., **Ragan, B. G.**, Morand, A. M., & Sackau, T. (2010, November). *Combining GPS and accelerometer data as a new functional outcome measure for Multiple sclerosis: A case comparison study of the movement and activity in physical space [MAPS] score*. Paper session presented at the 2010 mHealth Summit Conference, Washington D.C.
135. **Sparks, A.** (2010, January). *Do TANF recipients benefit from a relationship awareness and communication skills program? An implementation study of 'Within my reach.'* Poster session presented at Society for Social Work and Research Annual Conference, San Francisco, CA.
136. **Sparks, A.** (2010, March). *Financial social work online symposium*. Invited speaker for an online symposium sponsored by The Center for Financial Social Work and The University of Maryland School of Social Work, Baltimore, MD.
137. **Sparks, A.** (2010, April). *Within my reach: A parenting and relationship education program for low income parents*. Workshop presented at the Ohio Healthy Relationship Conference, Columbus, OH.
138. **Sparks, A.** (2010, October). *Bringing financial literacy into your agency*. Workshop presented at the A Call to Action for Financial Literacy "Train the Trainer" program sponsored by The Ohio Treasurer of State and The Governor's Office of Faith Based and Community Initiatives, Athens, OH.
139. **Spjeldnes, S.**, & Yamatani, H. (2010, October). *Saving the criminal justice system: Benefits of a social service collaborative*. Paper session presented at the annual conference of the Council on Social Work Education, Portland, OR.
140. **Starkey, C.** (2010, May). *Education Forum*. Paper session presented to the Ohio Athletic Trainers' Association, Columbus, OH.

141. **Starkey, C.** (2010, November). *MRSA in the athletic environment*. Paper session presented at the 24th Annual Jose I Ricard Family Medicine and Sports Medicine Conference, Huntington, WV.
142. Stone, K. J., & **Ryan, T. J.** (2010, June). *Functionality testing of community carbon monoxide detectors*. Paper session presented at the 74th annual educational conference & exhibition of the National Environmental Health Association, Albuquerque, NM.
143. **Stretton, D.** (2010, November). *EHR adoption in Rural long-term care facilities* [Abstract #230119]. Poster session presented to the *American Public Health Association*, Denver, CO.
144. **Stretton, D.** (2010, November). *EHR adoption in rural physician practices* [Abstract #230094]. Poster session presented to the *American Public Health Association*, Denver, CO.
145. Tanda, H., Kelder, B., **Berryman, D. E.**, Okada, S., Tarnowski, M., List, E. O., & Kopchick, J. J. (2010, June). *Effects of transgenic human CIDE-A expression on body composition and lipid accumulation in mice*. Paper session presented at the 92nd annual meeting of the Endocrine Society, San Diego, CA.
146. Taylor, C. A., Shirk, B., Wang, Y., & **Holben, D. H.** (2010, November). *Differences in rates of Metabolic syndrome in U.S. adolescents by participation in the Supplemental nutrition assistance program*. Paper session presented at the American Dietetics Association Food and Nutrition Conference and Expo, Boston, MA.
147. Taylor C. A., Shirk, B., Wang, Y., & **Holben, D.H.** (2010). *Differences in rates of Metabolic syndrome in U.S. Adolescents by participation in the supplemental nutrition assistance program* [Abstract]. *Journal of the American Dietetics Association*, 110, A106.
148. **Tennant, K.** (2010, November). *Physiological status related to quality of life in older adults*. Paper session presented at the annual scientific meeting of the Gerontological Society of America, New Orleans, LA.
149. **Tennant, K.** (2010, April). *The lived experience of an RN-BSN student in cyberspace*. Paper session presented at conference of the Association for University Regional Campuses of Ohio (AURCO), Kent State University, Kent, OH.
150. **Tennant, K.** (2010, November). *The lived experience of unexplained fatigue in rural elderly*. Collaborative, interdisciplinary research accepted for presentation at the annual scientific meeting of the Gerontological Society of America, New Orleans, LA.
151. **Thomas, J.**, Ross, R., Russ, D. W., Clark, B. C., Cowen, J., Pickett, R., & Linsenmayer, M. (2010, November). *Trunk muscles respond to task specific fatigue in an opposite manner as appendicular muscles* [Abstract]. Society for Neuroscience Online, Neuroscience Meeting Planner, Program No. 381.5.
152. Tonn, K., & **Ryan, T. J.** (2010, June). *MRSA prevalence in college residential halls*. Paper session presented at the 74th annual educational conference & exhibition of the National Environmental Health Association, Albuquerque, NM.

153. Trent, A., & **Kim, Y.** (2010, March). *Penetration-aspiration scale for different bolus consistencies in poststroke patients*. Poster session presented at the annual conference of the Dysphagia Research Society, San Diego, CA.
154. Vance, R., & **Basta, T.** (2010, November). *Stigmatizing attitudes toward individuals living with HIV/AIDS: Results from rural Appalachian Ohio*. Paper session presented at the annual meeting of the American Public Health Association, Denver, CO.
155. Vance, R., **Basta, T.**, Bute, J., & **Denham, S.** (2010, March). *Health needs in rural Appalachian Ohio: The results of a community health needs assessment*. Paper session presented at the 33rd annual meeting of the Appalachian Studies Association, Dahlenega, GA.
156. Vance, R., **Basta, T.**, Bute, J., & **Denham, S.** (2010, November). *Successes from a community-academic partnership: The identification and prioritization of health needs in rural Appalachian Ohio*. Paper session presented at the 138th annual meeting of the American Public Health Association, Denver, CO.
157. Vargas, J., Boyer, E., & **Hallowell, B.** (2010, March). *The establishment and benefits of a university-led respite volunteer program*. Paper session presented at the annual convention of the Ohio Speech-Language-Hearing Association, Columbus, OH.
158. Wang, S., **Xu, L.**, & Mannell, R. (2010, February). *Contribution of temporal envelope and fine structure in mandarin lexical tone perception for sensorineural hearing-impaired listeners* [Abstract]. Paper session presented at the Association for Research in Otolaryngology, Anaheim, CA. *Abstr ARO Midwinter Meeting*, 33, 150-151.
159. Wang, S., **Xu, L.**, & Mannell, R. (2010, March). *Lexical tone perception in sensorineurally hearing impaired listeners using temporal cues* [Abstract]. Paper session presented at the annual meeting of the American Auditory Society, Scottsdale, AZ.
160. Wilson, K., & **Jurich, J.** (2010, October). *Vacation or civic engagement? How professional development and motivation shape students' international service-learning experiences*. Paper session presented at the annual meeting of the International Association for Research on Service-Learning and Community Engagement, Indianapolis, IN.
161. Wilson, M., McGlynn, M., Knutson, M., & **Kushnick, M.** (2010, October). *An acute bout of exercise alters blood triglycerides differently in men with above versus below average initial concentrations*. Paper session presented at the 2010 regional conference of the Midwest American College of Sports Medicine, Indianapolis, IN.
162. Wright-Piekarski, J., List, E. O, Blischak, J. D., Zacharias, A., Funk, K., Ivins, D., Andrews, G., Walcutt, E., Anderson, N., Leone, R., **Berryman, D. E.**, & Kopchick J. J. (2010, June). *Growth hormone stimulated macrophage infiltration and inflammation in adipose tissue*. Paper session presented at the 92nd annual meeting of the Endocrine Society, San Diego, CA.
163. **Xu, L.** (2010, October). *Contribution of temporal envelope and fine structure in Mandarin lexical tone perception for sensorineural hearing-impaired listeners. Pathology of the inner ear: Mechanisms and treatments*. Paper presented at an International Symposium Celebrating the 50th Anniversary of the Kresge Hearing Research Institute, Ann Arbor, MI.

164. **Xu, L.** (2010, June). *Lexical tone development in prelingually-deafened children with cochlear implants*. Paper session presented at the 6th International Symposium on Hearing Science Research and Clinics, Changsha, China.
165. **Xu, L.** (2010, December). *Lexical tone perception: Temporal envelope and fine structure cues*. Invited paper session presented at the Department of Otolaryngology, Shanghai Sixth People's Hospital, Shanghai Jiatong University, Shanghai, China.
166. **Xu, L.** (2010, June). *Temporal aspects of sine-wave speech*. Invited paper session presented at the Department of Otolaryngology, Shanghai Sixth People's Hospital, Shanghai Jiatong University, Shanghai, China.
167. **Xu, L.** (2010, March). *Temporal aspects of sine-wave speech*. Invited paper session presented at the School of Audiology and Speech Sciences, University of British Columbia, Vancouver, Canada.
168. **Xu, L.** (2010, March). *Temporal aspects of sine-wave speech recognition*. Invited paper session presented at the Department of Speech & Hearing Science, Arizona State University, Tempe, AZ.
169. **Xu, L.** (2010, December). *The make of an SCI paper*. Invited paper session presented at the Department of Otolaryngology – Head & Neck Surgery, Beijing Institute of Otorhinolaryngology, Beijing Tongren Hospital, Capital University of Medical Sciences, Beijing, China.
170. **Xu, L.** (2010, December). *The make of an SCI paper*. Invited paper session presented at the Institute of Speech and Hearing Science, East China Normal University, Shanghai, China.
171. **Xu, L.,** Chen, X., Wang S., Zhou, N., Li, Y., & Han D. (2010, August). *Tone perception and production in pediatric cochlear implants users*. Paper session presented at the Collegium ORLAS Congress, Budapest, Hungary.
172. **Xu, L.,** Zhou, N., Schultz, H., & Mendez, B. (2010, February). *Temporal aspects of sine-wave speech* [Abstract]. Paper session presented at the Association for Research in Otolaryngology, Anaheim, CA. *Abstr ARO Midwinter Meeting*, 33, 152.

Grants and Contracts Awarded⁶

July 1, 2009 to June 30, 2010

1. **Althaus, R. A.** Athens Mental Health Center: Final Years in its Community Context, Ohio University Research Committee, \$7,983, FY2010.
2. **Benigno, J.** Effect of Event Knowledge on Children's Language Production, Ohio University Research Committee, \$7,796, FY2010.
3. **Chleboun, G. S.** Ultrasound imaging of lumbar flexion and extension, Institute for Neuromusculoskeletal Research, Ohio University, \$4,275, FY2010.
4. **Chleboun, G., & Sergeev, A.** Ultrasound Imaging of Lumbar Spine Flexion and Extension, International Mechanical Diagnosis and Therapy Research Foundation, \$10,000, FY2010.
5. Clark, B., Howell, J., **Thomas, J.**, & Walkowski, S. Neurophysiologic Effects of Manipulative Treatment of Individuals with Subacute Back Pain, Osteopathic Heritage Foundation, \$84,871, FY2010.
6. **Denham, S.** Improving Diabetes Outcomes in the Appalachian Region, Ohio Department of Health, \$5,000, FY2010.
7. **Denham, S., Henderson, D.,** Vance, R., Blankenship, M., McManus, C., & Johnson, L. Dissemination and Evaluation of Diabetes: A Family Matter: A Toolkit for the Appalachian Region, Centers for Disease Control and Prevention, \$190,000, FY2010.
8. **Denham, S.** Diabetes Conference, Roche Diagnostics Corp, \$300, FY2010.
9. **Denham, S.** Diabetes Conference, Sanofi-Aventis LLC, \$350, FY2010.
10. **Hallowell, B.** Ohio Master's Network Initiative in Education (OMNIE) MA Internship Program, Ohio Master's Network Initiative in Education (OMNIE), Ohio Department of Education, \$208,000, FY2010
11. **Hallowell, B.** Annual Review of NSF-Sponsored Biomedical Engineering Senior Design Projects to Aid Persons with Disabilities, National Science Foundation, University of Connecticut, \$19,261, FY2010.
12. **Hallowell, B., & Kruse, H. K.** Patent finalization, expedited research, and supplemental postdoctoral support for an invention entailing eyetracking methods to assess comprehension in people with brain injury. Ohio University Technology Gap Fund, \$26,769, FY2010.

⁶ This report is primarily intended to report research and scholarship for year ending December 31, 2010. However, due to the "rolling" nature of grant proposals and awards, this part of the College of Health Sciences and Professions report includes two sections for grants and contracts: (a) July 1, 2009 through June 30, 2010; and, (b) July 1, 2010 through June 30, 2011 (to correspond to the University Office of Research and Sponsored Programs [ORSP] reporting periods). The entries reflect only the extramural and intramural grants and contracts for the College of Health Sciences and Professions (not for those received by academic units that *were relocated to other colleges* as part of university restructuring (effective 7/1/10).

The present College report adopts the convention of the University's ORSP reflecting grants and contracts income from all extramural sources according to the *fiscal year in which the award was made*. In some cases, a multi-year grant will be awarded *entirely in the first year*; in other cases, funding will occur on a *year-to-year basis*. For this reason, depending on the award mechanism, the data do not reflect funding for multi-year projects if the funds were technically credited by ORSP to the College in prior years.

For actual dollar amounts credited to the College (per each investigator's percentage of responsibility), see ORSP's *Annual Award Reports*. Available at: http://www.ohio.edu/research/Award_Reports.cfm

13. **Holben, D.** The ECOhio GARDEN Project: Fulbright, Foundation for Educational Exchange Between Canada and the USA, \$3,750, FY2010.
14. **Holben, D. H.** Food Insecurity and Diabetes Outcomes in a Rural Diabetes Clinic. Diabetes Research Initiative Research Apprenticeship Grant, Ohio University, Athens, Ohio, \$3,000, FY2010.
15. Howard, W. S. & **Adeyanju, M.** Maternal and Child Health in Muslim Africa. U.S. Agency International Development, American Council on Education, \$50,000.00, FY2010.
16. **Jensen-Besaw, D.** Fun and Service Together, Corporation for National and Community Service (CNCS), \$75,000, FY2010.
17. **Jensen-Besaw, D.** Trimble Local School District, 21st Century, U.S. Department of Education, \$177,530, FY2010.
18. **Jensen-Besaw, D.** Athens City Schools, 21st Century, U.S. Department of Education, \$179,969, FY2010.
19. **Jensen-Besaw, D.** Federal Hocking Schools, 21st Century, U.S. Department of Education, \$181,000, FY2010.
20. **Jensen-Besaw, D.** Be Bold: Kids on Campus 2010 Summer Program (Nurse's Station), Sisters of Saint Joseph Charitable Fund, \$7,000, FY2010.
21. **Kim, Y.** Biomechanical Effects of Neuromuscular Electrical Stimulation (NMES) Intervention in Chronic Dysphagia Patients, Ohio University Research Committee, \$7,758, FY2010.
22. Kopchick, J., List, E., & **Berryman, D.** The Somatotropic Axis and Healthy Aging: A Search for Mechanisms. Southern Illinois University. \$332,294 & \$32,294, FY2010.
23. Kreutzer, A. Pi. I., **Akindex, G.**, & Carr, D. Ohio University and Play Soccer Partnership, Bureau of Educational and Cultural Affairs, U.S. Department of State, \$225,000.00, FY2010.
24. LC Technologies, & **Hallowell, B.** Eyetracking Comprehension Assessment System (ECAS): Improving validity of comprehension assessment for people with brain injury. SBIR Award, National Institutes of Health/National Institute on Deafness and Other Communication Disorders, \$670,955, (\$139,978 Year 1), FY2010.
25. **Malawista, M.** Therapy Speech and Hearing, Echoing Meadows, \$760, F 2010.
26. **Malawista, M.** Therapy Speech and Hearing, Morgan County School, \$13,840, FY2010.
27. **Malawista, M.** Therapy Speech and Hearing, Christ United Methodist Preschool, \$264, FY2010.
28. **Malawista, M.** Therapy Speech and Hearing, Redeemer Lutheran School, \$456, FY2010.
29. McAvoy, D. (PI), **Potkanowicz E. S.**, **Hallowell B.**, & Schwerha, D. MRI-R2: Acquisition of a Synergistic Driving Simulator, National Science Foundation (ARRA), \$170,000, FY2010.
30. **Meier, R.**, & **Nance, B.** Community Outreach for Hearing Healthcare Services in Southeast Ohio, Baxter Foundation, \$27,307, FY2010.
31. **Morrone, M.** (P. I., **Ryan, T.**, **Basta, T.**, Miller, S., & Lewis, M. Public Outreach and Support and Solutions to Energy and Environmental Issues at the Gaseous Diffusion Plant in Piketon, Ohio, U. S. Department of Energy, \$450,000, FY2010.
32. **Murray, T.** HeartWorks00A Partnership Between Ohio University WellWorks and O'Bleness Memorial Hospital, O'Bleness Memorial Hospital, \$174,153, FY2010.
33. **Overby, A.** Therapy Physical Therapy, Echoing Meadows Residential Center, \$5,444, FY2010.

34. **Overby, A.** Therapy Physical Therapy, O'Bleness Memorial Hospital, \$571,752, FY2010.
35. **Overby, A.** Therapy Physical Therapy, Athens County Board of MRDD, \$1,374, FY2010.
36. **Overby, A.** Therapy Physical Therapy, Hocking County Board MRDD, \$10,570, FY2010.
37. **Overby, A.** Therapy Physical Therapy, Meigs County Board of MR/DD, \$11,742, FY2010.
38. **Overby, A.** Therapy Physical Therapy, Buckeye Hills BHCC, \$73,733, FY2010.
39. **Ries D.** National Institutes of Health Pediatric Loan Repayment Program, Awarded by the National Institutes of Health, 2 year cycle, \$17,420, 2008 to 2010.
40. **Rose-Grippa, K.** Grow Our Own—Advanced Education Nursing Program, Health Research Services Administration, \$275,832, FY2010.
41. **Russ, D. W.** Sprint-Modeled Electrical Stimulation Training to Enhance Aged Muscle Quality. Baker Fund, Ohio University, \$8,314, FY2010.
42. **Ryan, T. J.** A Pilot Project of M-Learning Efficacy and Assessment Approaches in the Applied Sciences. The Ohio University Foundation (1804 Fund). \$14,573, FY2010.
43. **Sparks, S.** Community Engagement Partnership Grant through Stevens Literacy Center, Ohio Governor's Office of Faith Based and Community Initiatives, \$1,500 FY2010.
44. **Starkey, C.** Athletic Training Services for Area High Schools, Various, \$9,300, FY2010.
45. **Starkey, C.** Athletic Training Services for Area High Schools, Various, \$10,100, FY2010.
46. **Starkey, C.** Athletic Training Services for Area High Schools, Various, \$166,540, FY2010.
47. **Williams, P., Chleboun, G. S., & Williams, E.** Media Enhancement of Graduate Student Instruction and Clinical Research for Observational Movement Analysis. Ohio University 1804 Fund, \$19,100, FY2010.
48. **Xu, L.** Tone Perception and Production and Vocal Singing with HiRes 120 Speech-Processing Strategy in Mandarin-Speaking Children. Advanced Bionics Corporation, \$4,500, FY2010.
49. Zhou, N., & **Xu, L.** Ruth L. Kirschstein National Research Service Award, Music and Tone Perception and Dichotic Stimulation, National Institutes of Health, \$18,408, FY2010.

Grants and Contracts Awarded

July 1, 2010 – June 30, 2011

1. **Basta, T.** NIH Health Disparities Loan Repayment Program Award, National Institutes of Health, National Center on Minority Health and Health Disparities, \$20,000, 2010-2012.
2. **Brannan, R. G.** Food Applications of Multifunctional Dietary Fibers. Z Trim Holdings Research Grant, \$21,000 + \$1,000, FY2011.
3. Clark, B., **Russ, D., Thomas, J., & Wilson, T.** Role of Intracortical Excitability in Mal de Debarquement Syndrome. MdDS Balance Disorder Foundation, \$20,000. FY2011.
4. Clark, B., **Russ, D.,** Heh, V., & **Thomas, J.** Intracortical Mechanisms of Muscle Weakness (ARRA), National Institutes of Health, \$426,122, FY2011.

5. **Denham, S.** Dissemination and Evaluation of Diabetes: A Family Matter, A Toolkit for the Appalachian Region, Centers for Disease Control and Prevention, \$200,000, FY2011.
6. **DiGiovanni, J.** Ohio Master's Network Initiative in Education (OMNIE) MA Internship Program. Ohio Master's Network Initiative in Education, Ohio Department of Education, \$229,200, FY2011.
7. **Galbreath, W.** Child Welfare Workforce Professional Education Program, Ohio Department of Jobs and Family Services, \$123,500, FY2011.
8. Hamel-Lambert, J. & **Nyirati, C.** Patient Centered Medical Home (PCMH) Regional Workgroup of Southeastern Ohio. Ohio Academy of Family Physicians, \$30,000 + \$15,000. FY2011.
9. **Hallowell, B.,** & Kruse, H. Subcontract to LC Technologies, SBIR: Eyetracking Comprehension Assessment System (ECAS): Improving Validity of Comprehension Assessment for People with Brain Injury. LC Technologies, \$127,059 + \$18,194, FY2011.
10. **Holben, D. H.** Improving Produce Intake During the Winter Months of Impoverished Women Living in Central Appalachia through Provision of a Home-delivered Fresh Produce Intervention. American Cancer Society/Scripps College (Ohio University) Partnership, \$5,000, FY2011.
11. **Jensen-Besaw, D.** Summer Intermediate Academy, Ohio Department of Education, \$9,077, FY2011.
12. **Jensen-Besaw, D.** Kids on Campus STEM Afterschool Robotics Initiative. LEGO Children's Fund, \$4,357. FY2011.
13. **Jensen-Besaw, D.** More Active Children, Sisters of Saint Joseph Charitable Fund, \$18,000, FY2011.
14. **Jensen-Besaw, D.** Be Bold: Real Food for Real Kids, Athens Foundation, \$2,843, FY2011.
15. **Jensen-Besaw, D.** 21st Century-Federal Hocking Elementary Schools. U.S. Department of Education/Ohio Department of Education, \$131,000, FY2011.
16. **Jensen-Besaw, D.** 21st Century-Federal Hocking Middle School. U.S. Department of Education/Ohio Department of Education, \$181,000, FY2011.
17. **Jensen-Besaw, D.** 21st Century-Athens City Schools. U.S. Department of Education/Ohio Department of Education, \$130,727, FY2011.
18. **Jensen-Besaw, D.** 21st Century-Trimble Local Schools. U.S. Department of Education/Ohio Department of Education, \$190,000. FY2011.
19. **Jensen-Besaw, D.** 21st Century-Trimble Elementary After School Program. U.S. Department of Education/Ohio Department of Education, \$162,490, FY2011.
20. **Malawista, M.** FY11 Hearing and Speech Contract, Athens County Board of DD, \$240, FY2011.
21. **Malawista, M.** FY Hearing and Speech Contract, Redeemer Lutheran School, \$616, FY2011.

22. **Malawista, M.** FY Hearing and Speech Contract, Christ United Methodist Preschool, \$336, FY2011.
23. **Malawista, M.** Hearing and Speech Contract, Trimble Local School District, \$1,860, FY2011.
24. **Malawista, M.** Hearing and Speech Contract, O'Bleness Memorial Hospital, \$2,100, FY2011.
25. **Malawista, M.** IPAC Organizational Services – SEO-IAT Coordinator, Integrating Professionals for Appalachian Children, \$3,180, FY2011.
26. **Malawista, M.** Hearing and Speech Contract, Echoing Meadows Residential Center, \$720, FY2011.
27. **Malawista, M.** Hearing and Speech Contract, Morgan County Schools, Center, \$4,513, FY2011.
28. **Metzler-Wilson, K.** *Pharmacokinetics and effectiveness of transdermal skin anesthesia.* Ohio University: Ohio University Research Committee, \$8,000, FY2011.
29. **Montgomery, J.** (with J. Evans, R. Gillam). Cognitive Processing and Sentence Comprehension in Specific Language Impairment (SLI). R01 from the *National Institute on Deafness and Other Communication Disorders*. (\$2.9M, FY2011-2015; \$510,705, Year 1).
30. **Murray, T.** Heartworks—A Partnership Between Ohio University WellWorks and O'Bleness Memorial Hospital, O'Bleness Hospital, \$181,162, FY2011.
31. **Nyirati, C.** Advanced Education Nursing Traineeship, U.S Department of Health and Human Services Health Resources and Services Administration (DHHS/HRSA, \$20,433, FY2011.
32. **Overby, A.** Physical Therapy Contract, Athens County Board of DD, \$1,556, FY2011.
33. **Overby, A.** Physical Therapy Contract, Meigs County Board of DD, \$9,514, FY2011.
34. **Overby, A.** Physical Therapy Contract, Washington County Board of DD, \$2,161, FY2011.
35. **Overby, A.** Physical Therapy Contract, Echoing Meadows Residential Center, \$4,472, FY2011.
36. **Overby, A.** Physical Therapy Contract, Perry-Hocking Educational Service Center, \$2,797, FY2011.
37. **Overby, A.** Physical Therapy Contract, Buckeye Hills Career Center, \$84,705, FY2011.
38. **Overby, A.** Physical Therapy Contract, Hocking County Board of DD, \$11,790, FY2011.
39. **Overby, A.** Physical Therapy Contract, O'Bleness Memorial Hospital, \$655,755, FY2011.
40. **Pope, N.** Careers in Aging Week 2011, Association for Gerontology in Higher Education. \$200, FY2011.
41. **Rose-Grippa, M. R.** Grow Our Own—Advanced Education Nursing Program, Health Resources and Services Administration. \$787,831 FY2009-2011; \$246,468, Year 3.

42. **Sindelar, B.**, & Cotton, J. Strength of a Novel Suture Anchor System, New Albany Surgical Hospital Foundation, \$7,558.00, FY2011.
 43. **Starkey, C.** Athletic Training Services for Area High Schools, Colleges and Clinics, Various Local Schools, \$210,500, FY2011.
 44. **Starkey, C.** Athletic Training Services for Area High Schools, Colleges and Clinics. Various Local Schools, \$10,100, FY2011.
-

© Copyright December 31, 2011, College of Health Sciences and Professions, Ohio University,

Send corrections to:
J. Horner,
Associate Dean for Research and Graduate Studies
College of Health Sciences and Professions
W380 Grover Center
Ohio University
740.597.1263
hornerj@ohio.edu