



OHIO
UNIVERSITY

College of Health Sciences and Professions

Office of the Dean

Grover Center W379
Athens, OH 45701-2979
T: 740.593.9336
F: 740.593.0285
www.ouchsp.org

Department of Social and Public Health

Grover Center W324
T: 740.593.4675

School of Applied Health Sciences and Wellness

Grover Center E317
T: 740.566.0470.

School of Nursing

Grover Center E365
T: 740.593.4494

School of Rehabilitation and Communication Sciences

Grover Center W290
T: 740.593.1224

Annual Report:

Faculty Research & Scholarship

(January 1, 2009—December 31, 2009)

THIRD PRINTING SEPTEMBER 24, 2010

Table of Contents

College Organizational Chart

Schools and Departments

Department of Social & Public Health (DSPH)

Undergraduate and Graduate Programs

Accreditation

School of Applied Health Sciences & Wellness

(SAHSW)

Undergraduate and Graduate Programs

Accreditation

School of Nursing (SON)

Undergraduate and Graduate Programs

Accreditation

School of Rehabilitation & Communication Sciences

(SRCS)

Undergraduate and Graduate Programs

Accreditation

Faculty

Group I

Group II

Research Laboratories

Grants & Contracts Awarded

July 1, 2008 to June 30, 2009

July 1, 2009 to June 30, 2010

Scholarship and Creative Activity in 2009

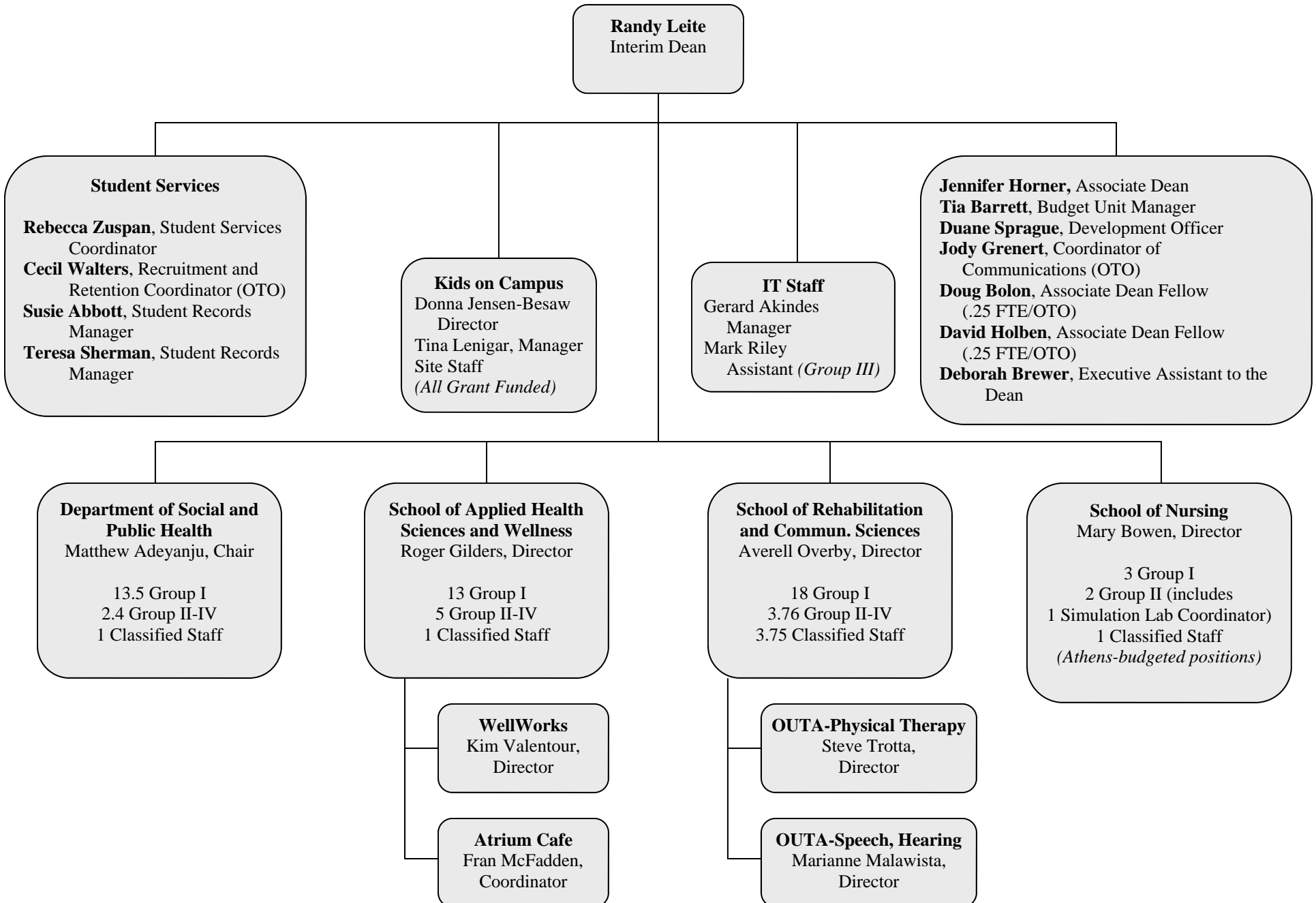
Theses and Dissertations

Publications (articles, chapters, books, proceedings)

Presentations (including published abstracts of posters and presentations)

College of Health Sciences and Professions

August 2, 2010



Schools and Departments

Department of Social and Public Health

This department is distinguished by its breadth of programs addressing community health, environmental and population-level diseases, and health administration. This department has 13.5 Group I faculty; 2.4 Group II-IV, and 1 classified staff member.

Undergraduate programs

Health (BS)—Community Health; Long-Term Care; Health Administration

Environmental Health Sciences (BS[EHI])

Industrial Hygiene (BS[IHI])

Human and Consumer Sciences (BS)—Child and Family Studies

Interdisciplinary Certificate in Gerontology

Graduate programs

Master of Health Administration (MHA)

Online Master of Health Administration (MHA)

Master of Public Health (MPH)

Human and Consumer Sciences (MS)—Family Studies

Human and Consumer Sciences (MS)—Early Childhood Education and Family Studies [Child Life Specialist]

Certificate in African Community Health Services

Certificate in Health Care Services Administration

Certificate in Health Policy

Interdisciplinary Certificate in Gerontology

Accreditation

Industrial Hygiene (bachelor's): Applied Science Accreditation Commission (ASAC), 2004-2010; Accreditation Board for Engineering and Technology (ABET), 2004-2010

Environmental Health (bachelor's degree): National Environmental Health Science and Protection Accreditation Council (NEHSPAC), 2004-2010

Long Term Care Administration (bachelor's degree): National Association of Boards of Examiners for Long Term Care Administrators (NAB), 2005-2010

Public Health (master's degree): Council on Education for Public Health (CEPH), 2003-2009

School of Applied Health Sciences and Wellness

This school includes the WellWorks employee health program, and the Atrium Café, supported by a coherent set of inter-related academic degrees in exercise physiology, nutrition, and athletic training. This school has 13 Group I faculty, 5 Group II-IV faculty, and 1 classified staff member.

Undergraduate programs

Athletic Training (BS)

Physiology of Exercise (BS)

Human and Consumer Sciences (BS)—Nutrition

Human and Consumer Sciences (BS)—Applied Nutrition (major)

Human and Consumer Sciences—Applied Nutrition (minor)

Graduate programs

Athletic Training (MS)

Physiology of Exercise (MS)

Human and Consumer Sciences (MS)—Food and Nutrition

Accreditation

Applied Nutrition (formerly Dietetics) (bachelor's degree): Commission on Accreditation for Dietetics Education (CADE), 2005-2015

Athletic Training (bachelor's degree): Commission on Accreditation of Athletic Training Education (CAATE), 2007-2012

Athletic Training (master's degree): Commission on Accreditation of Athletic Training Education (CAATE), 2008 -2013

School of Nursing

The school is comprised of a comprehensive ladder of nursing programs, from associate degree to Master of Science in Nursing. The RN-to-BSN is an online program with national distribution. On the Athens campus, this School has 6 Group I faculty, 4 Group II-IV faculty (including one simulation lab coordinator), and 2 classified staff members.

Undergraduate programs

Associate Degree in Nursing (ADN)

Bachelor of Science in Nursing (BSN)

Registered Nurse-to-Bachelor of Science in Nursing (RN-to-BSN)

School Nurse License

Graduate programs

Master of Nursing (MSN) with three major areas of concentration:

- *Education,*
- *Administration, and*
- *Family Nurse Practitioner*

Accreditation

Associate Degree: National League for Nursing Accrediting Commission (NLNAC), 2007-2015; and Ohio Board of Nursing (OBN), 2005-2010

RN-to-BSN program: Commission for Collegiate Nursing Education (CCNE), 2001-2011

Bachelor of Science in Nursing (BSN): Commission for Collegiate Nursing Education (CCNE)

Master's of Science in Nursing (MSN): Commission for Collegiate Nursing Education (CCNE), 2007-2012

School of Rehabilitation and Communication Sciences

The School is comprised of the programs of Physical Therapy and Communication Sciences and Disorders. Physical Therapy offers a doctorate, and the Communication Sciences and Disorders program offers bachelor's and master's preparation, as well as both an Audiology Doctorate and Doctor of Philosophy degrees. This school has 18 Group I faculty members, 3.75 Group II-IV faculty members, and 3.75 classified staff members, some of whom staff to OU Therapy Associates (offering physical therapy, and speech, language and hearing services).

Undergraduate Programs

Hearing, Speech and Language Sciences (BS)

Hearing, Speech and Language Sciences (Minor)

Honors Tutorial Program, Hearing Speech and Language Sciences

Graduate programs

Doctor of Physical Therapy (DPT) and transitional DPT

Speech–Language Pathology (MA)

Doctor of Clinical Audiology (AuD)

Hearing Science (PhD)

Speech–Language Science (PhD)

Teacher Certification for Speech–Language Pathology

Accreditation

Physical Therapy (professional doctorate): Commission on Accreditation in Physical Therapy Education (CAPTE), 2009-2019

Speech–Language Pathology (master's degree): Council on Academic Accreditation (CAA) of the American Speech-Language-Hearing Association (ASHA), 2004-2012

Audiology (professional doctorate): Council on Academic Accreditation (CAA) of the American Speech-Language-Hearing Association (ASHA), 2004-2012

Faculty^{1,2}

(Calendar year 2009; listed alphabetically)

Group I

- Matthew O. Adeyanju, PhD, MPH, CHES, FASHA, Professor & Department Chair (DSPH)
- Tania Basta, PhD, MPH, CHES, Assistant Professor (DSPH)
- Joann Benigno, PhD, Assistant Professor (SRCS)
- Darlene Berryman, PhD, RD, LD Associate Professor (SAHSW)
- Doug Bolon, PhD, Associate Professor (DSPH)
- Robert Brannan, PhD, Assistant Professor (SAHSW)
- Mary E. Bowen, RN, DNS, JD, NEA, School Director (SON)
- Susan Bullard, PhD, Assistant Professor (SAHSW)
- Jenny Chabot, PhD, CCLS, Associate Professor (DSPH)
- Gary S. Chleboun, PhD, PT, Professor (SRCS)
- Sharon A. Denham, DSN, RN, Professor (SON)³
- Jeffrey J. DiGiovanni, PhD, Associate Professor (SRCS)
- Roger Gilders, PhD, NSCAcscs, Professor & School Director (SAHSW)
- Brooke Hallowell, PhD, Associate Professor (SRCS)^β
- Deborah E. Henderson, PhD, RN, Professor (SON)
- David H. Holben, PhD, RD, LD, Professor (SAHSW)
- Gregory Janson, PhD, Associate Professor (DSPH)
- Fuh-Cherng [Fuh] Jeng, MD, PhD, Assistant Professor (SRCS)
- Joan Jurich, PhD, Associate Professor (DSPH)
- Youngsun Kim, PhD, Assistant Professor (SRCS)^β
- B. Andrew Krause, PhD, ATC, AT, Assistant Professor (SAHSW)
- Michael Kushnick, PhD, ACSMhfs, Associate Professor (SAHSW)

¹This list includes faculty members who held appointments during calendar year **2009** within those schools that remain in the new College of Health Sciences and Professions (7/1/10 forward).

²The acronym after each entry (in parentheses) indicates the current department or school affiliation: **DSPH:** Department of Social and Public Health; **SAHSW:** School of Applied Health Sciences and Wellness; **SON:** School of Nursing; **SRCS:** School of Rehabilitation and Communication Sciences.

³Subsequently has taken early retirement (fall 2010).

- Chao-Yang Lee, PhD, Assistant Professor (SRCS)
- Gari Lesnoff-Caravaglia, PhD, Professor (DSPH)
- Margaret Manoogian, PhD, Associate Professor
- Sally A. Marinellie, PhD, Associate Professor (SRCS)
- John McCarthy, PhD, Assistant Professor (SRCS)^β
- James W. Montgomery, PhD, Professor (SRCS)
- Michele Morrone, PhD, RS, Associate Professor (DSPH)
- Christina Nyirati, PhD, Assistant Professor (SON)
- Averell S. Overby, DrPH, PT, Associate Professor & School Director (SRCS)
- Helmut W. Paschold, PhD, CIH, CSP, PE (TX), Assistant Professor (DSPH)
- Edward Potkanowicz, PhD, ACSMhfs, Assistant Professor (SAHSW)
- Sharon R. Rana, PhD, ASCMhfs, NSCAcscs, Associate Professor (SAHSW)
- Dennis T. Ries, PhD, Assistant Professor (SRCS)^β
- Kathleen Rose-Grippa, PhD, RN, Professor (SON)
- David Russ, PhD, PT, Assistant Professor (SRCS)
- Tim Ryan, PhD, RS, CIH, Associate Professor (DSPH)
- Anthony M. Sallar, PhD, MPH, MBA, Assistant Professor (DSPH)
- Samuel Scott, PhD, Assistant Professor (SRCS)
- Alexander V. Sergeev, PhD, MD, MPH, Assistant Professor (DSPH)
- Betty Sindelar, PhD, PT, Associate Professor (SRCS)
- Therese Snively, PhD, Assistant Professor (SON)⁴
- Charles [Chad] Starkey, PhD, ATC, AT, Associate Professor (SAHSW)^β
- David V. Stretton, PHD, MBA, CPA, Assistant Professor (DSPH)
- Kathleen Fox Tennant, PhD, APRN, BC, Assistant Professor (SON)
- James Thomas, PhD, PT, Associate Professor (SRCS)
- Li Xu, MD, PhD, Associate Professor (SRCS)
- Selena Yearwood, PhD, Assistant Professor (SON)⁵

⁴ Subsequently, has resigned (spring 2010).

⁵ Subsequently has resigned (spring 2010).

Group II

- RuthAnn Althaus, PhD, MPH, MBA, MSLIS, Professor (DSPH)
- Tina Bookman, MS, Instructor (SAHSW)
- Michael Clevidence, MS, CSCS, CPR/AED, Instructor (SAHSW)
- David Dominguese, MS, AT, CSCS, CPR/AED, Instructor (SAHSW)⁶
- Erin Driscoll, MS, AT, CPR/AED, Instructor (SAHSW)
- Denise Ferrell, MSN, RN, Assistant Professor (SON)
- Janice Howman, PT, MEd, Assistant Professor (SRCS)
- Francis McFadden, MS, Assistant Professor (SAHSW), Manager of the Atrium Café
- Juli L. Miller, MSHA, Instructor (DSPH)
- Marianne Malawista, PhD, Instructor and Clinic Coordinator, Speech-Language-Hearing, OU Therapy Associates (SRCS)
- Deborah Murray, MS, RD, LD, Assistant Professor (SAHSW)
- Davida Parsons, MA, Clinic Coordinator (resigned), Director, Speech-Language-Hearing, OU Therapy Associates (SRCS)⁷
- Jason White, MS, Instructor (SAHSW)⁸
- Petra Williams, PT MS NCS, Assistant Professor (SRCS)
- Lisa J. S. Yehl, MSHA, LNHA, Instructor (DSPH)

β: Faculty who were reviewed favorably for tenure and/or promotion during academic year 2009-2010, effective academic year 2010-2011.

⁶ Received PhD in 2010.

⁷ Resigned mid-year 2009.

⁸ Received PhD in 2010, and accepted a Group I faculty appointment effective September 1, 2010.

Research Laboratories at Grover Center^{9,10}

- Alzheimer's Lab (Samuel Scott) (SRCS)
- Athletic Training Lab (Chad Starkey, Director) (SAHSW)
- Auditory Electrophysiology (Fuh-Cherng [Fuh] Jeng, Director) (SRCS)
- Auditory Prosthesis Lab (Li Xu, Director) (SRCS)
- Auditory Psychophysics and Signal Processing Lab (Jeffrey DiGiovanni, Director) (SRCS)
- Augmentative and Alternative Communication Lab (John McCarthy, Director) (SRCS)
- Biomaterials Lab (Betty Sindelar, Director) (SRCS)
- Developmental Psycholinguistics Lab (James Montgomery, Director) (SRCS)
- Dysphagia Lab (Youngsun Kim, Director) (SRCS)
- Environmental Health / Industrial Hygiene Lab (Tim Ryan, Director) (DSPH)
- Environmental Research Lab (Tim Ryan, Director) (DSPH)
- Exercise Biochemistry Lab (Michael Kushnick, Director) (SAHSW)
- Exercise Physiology Lab (Sharon Rana and Michael Kushnick, Co-Directors) (SAHSW)
- Exercise Science Lab (Sue Bullard, Director) (SAHSW)
- Food Science Lab (Robert Brannan, Director) (AHSW)
- Motor Control Lab (James Thomas, Director) (SRCS)
- Muscle Physiology Lab (David Russ, Director) (SRCS)
- Neurolinguistics Lab (Brooke Hallowell, Director) (SRCS)
- Postural Control Lab (Averell Overby, Director) (SRCS)
- School-Age Language Lab (Sally Marinellie, Director) (SRCS)
- Sensory Analysis Lab (Robert Brannan, Director) (SAHSW)
- Speech Processing Lab (Chao-Yang Lee, Director) (SRCS)
- T.A.L.K. Lab (Joann Benigno, Director) (SRCS)
- Test Kitchen (Robert Brannan, Director) (SAHSW)
- Ultrasound/Muscle Imaging Lab (Gary Chleboun, Director) (SRCS)
- Vicon Motion Analysis Lab (James Thomas, Director) (SRCS)

⁹ Research laboratories listed are the responsibility of faculty in the new College of Health Sciences and Professions (effective 7/1/10), and do not include research laboratories that have been relocated to other colleges as part of university restructuring.

¹⁰ **DSPH:** Department of Social and Public Health; **SAHSW:** School of Applied Health Sciences and Wellness; **SON:** School of Nursing; **SRCS:** School of Rehabilitation and Communication Sciences.

Grants and Contracts Awarded

(July 1, 2008 to June 30, 2009)^{11,12,13}

1. Basta, T., \$7,500, Evaluation Consultant, Region V Family Planning Training Grant. Contract: Health Care Education & Training, Inc. via Department of Health and Human Services, 2009-2011.
2. Basta, T. \$7,000, Project Consultant, Communication Change (C-Change). Sub-contract: Ohio University School of Communication via Academy for Educational Development.
3. Chelboun, G. S., \$4,275, Ultrasound imaging of lumbar flexion and extension. Institute for Neuromusculoskeletal Research, Ohio University.
4. Denham, S., \$5,000, Improving Diabetes Outcomes in the Appalachian Region, Ohio Department of Health, 2009.
5. Denham, S., \$100, Diabetes Conference, Bayer, 2009.
6. Denham, S., \$200, Diabetes Conference, Merck & Co Inc., 2009.
7. Denham, S., \$500, Diabetes Conference, Takeda Pharmaceuticals, 2009.
8. Denham, S., \$750, Diabetes Conference, Novo Nordisk, 2009.
9. Denham, S., \$1,000, Diabetes Conference, Roche Diagnostics Corp, 2009.
10. Denham, S., \$5,000, Diabetes: A Family Matter Conference, Sanofi-Aventis LLC, 2009.
11. DiGiovanni, J., \$8,000, Phonemically Targeted Speech Processing Used in Conjunction with Combination compression and Linear Gain Processing, Ohio University Research Committee, 2009.
12. Dominguese, D. J. & Krause, B. A, \$450. Ohio Athletic Trainers' Association Research Assistant Grant, 2009.

¹¹ This report is primarily intended to report research and scholarship for year ending December 31, 2009. However, due to the "rolling" nature of grant proposals and awards, this part of the College of Health Sciences and Professions report includes two sections for grants and contracts: (a) July 1, 2008 through June 30, 2009; and, (b) July 1, 2009 through June 30, 2010 (to correspond to the University Office of Research and Sponsored Programs [ORSP] reporting periods). The entries reflect only the extramural and intramural grants and contracts for the new College of Health Sciences and Professions not grants and contracts received during the respective periods by academic units that *have been relocated to other colleges* as part of university restructuring (effective 7/1/10).

¹² The present College report adopts the convention of the University's ORSP reflecting grants and contracts income from all extramural sources according to the *fiscal year in which the award was made*. In some cases, a multi-year grant will be awarded *entirely in the first year*; in other cases, funding will occur on a *year-to-year basis*. For this reason, depending on the award mechanism, the data do not reflect funding for multi-year projects if the funds were technically credited by ORSP to the College in prior years.

¹³ For actual dollar amounts credited to the College (per each investigator's portion of the award), see ORSP's *Annual Award Reports*. Available at: http://www.ohio.edu/research/Award_Reports.cfm

13. Dominguese, D.J., \$750, Faculty Enhancement Grant, Ohio University, 2009.
14. Hallowell, B., \$192,700, MA Internship Program, Ohio Master's Network Initiative in Education (OMNIE), 2009.
15. Henderson, D., \$22,500, Undergraduate and Graduate Nursing Curricular Integration of Electronic Health Record and Clinical Tracking Software, 1804 Award, 2009.
16. Holben, D., \$250, 15th International Congress of Dietetics, American Dietetic Association, 2009.
17. Holben, D., \$1,000, Marie and August LePresti Endowment Fund Faculty Development Award, American Dietetic Association, 2009.
18. Taylor, C.A., & Holben, D.H., \$34,444, Assessing the link between food assistance program utilization and obesity, metabolic syndrome and risk for chronic disease in US children. United States Department of Agriculture RIDGE Grant (UC Davis RIDGE Grant Program).
19. Jeng, F.-C., \$5,000, Evoked Responses to Simulation of Cochlear Implants, American Speech-Language-Hearing Association Foundation, 2009.
20. Jeng, F.-C., \$6,286. Neurophysiologic and Psychoacoustic Indices for Hearing Disorders in Type I Diabetes. Diabetes Research Initiative, Appalachian Rural Health Institute, 2009.
21. Kaya, R., Gilders, R., & Kushnick, M., \$600, Does a single session of treadmill walking to expend 500 calories improve insulin sensitivity? The Provost's Undergraduate Research Fund, Ohio University, 2009.
22. Kopchick, J. J. (P.I.), Berryman, D. (co-PI), \$299,181, The Somatotropic Axis and Healthy Aging: A Search for Mechanisms, National Institutes of Health via Southern Illinois University, 2009.
23. Kushnick, M., Gilders, R., Bullard, S., & Rana, S., \$12,500, Acquisition of Advanced Cardiovascular Measurement Devices, House Bill Request, College of Health and Human Services, Ohio University, 2009.
24. Malawista, M., \$23,277, Therapy Speech and Hearing, Holzer Medical Center-Jackson, 2009.
25. Malawista, M., \$13,289, Therapy Speech and Hearing, Alexander Local School District, 2009.
26. Malawista, M., \$15,446, Therapy Speech and Hearing, Morgan County School, 2009.
27. McCarthy, J., \$10,000, Improving Auditory Scanning Interfaces in AAC Devices, American Speech-Language-Hearing Association Foundation, 2009.
28. Morrone, M., \$4,950, Kanawha Environmental Education Project (KEEP), Ohio EPA, 2009.
29. Morrone, M., \$44,550, Kanawha Environmental Education Project (KEEP), Ohio EPA, 2009.
30. Moss, L., \$15,616, Federal Hocking Local School District, 21st Century, 2009.
31. Moss, L., \$127,302, 21st Century Alexander Local Schools, 21st Century via Alexander, 2009.

32. Moss, L., \$160,576, 21st Century Federal Hocking Local Schools, 21st Century via FH, 2009.
33. Moss, L., \$178,699, 21st Century Athens City Schools, 21st Century via Athens, 2009.
34. Moss, L., \$22,428, Summer Intermediate Academy, Ohio Department Education, 2009.
35. Moss, L., \$25,079, Summer Intermediate Academy, Ohio Department Education, 2009.
36. Moss, L., \$126,955, Kids on Campus TANF Expansion Program Athens City School District, Ohio Department Education-TANF via Athens, 2009.
37. Moss, L., \$2,150, 2009 Kids on Campus Summer Woodworking Workshop, Athens Foundation, 2009.
38. Moss, L., \$45,000, Kids on Campus Summer Program CHSE Explorer and Adventure Campus, JP Morgan Chase Foundation, 2009.
39. Murray, T., \$174,153, HeartWorks, O'Bleness Memorial, 2009.
40. Overby, A., \$586,652, Therapy Physical Therapy, O'Bleness Memorial, 2009.
41. Overby, A., \$1,223, Therapy Physical Therapy, Athens County Board of MRDD, 2009.
42. Overby, A., \$10,022, Therapy Physical Therapy, Echoing Meadows Residential Center, 2009.
43. Overby, A., \$10,625, Therapy Physical Therapy, Hocking County Board MRDD, 2009.
44. Overby, A., \$13,746, Therapy Physical Therapy, Meigs County, 2009.
45. Overby, A., \$72,997, Therapy Physical Therapy, Buckeye Hills BHCC, 2009.
46. Parsons, D., \$2,400, Pediatric Medical Specialty Clinics, Ohio Department Health, 2009.
47. Parsons, D., \$252, Therapy Speech and Hearing, Christ United Methodist Preschool, 2009.
48. Parsons, D., \$616, Therapy Speech and Hearing, Redeemer Lutheran School, 2009.
49. Parsons, D., \$4,037, Therapy Speech and Hearing, Appalachian Community Visiting Nurse Association, Inc., 2009.
50. Parsons, D., \$7,581, Therapy Speech and Hearing, Echoing Meadows, 2009.
51. Parsons, D., \$9,740, Therapy Speech and Hearing, O'Bleness Memorial, 2009.
52. Parsons, D., \$22,347, Therapy Speech and Hearing, Doctors Hospital Nelsonville, 2009.
53. Parsons, D., \$54,833, Therapy Speech and Hearing, Hocking Valley Community Hospital, 2009.
54. Parsons, D., \$744, Therapy Speech and Hearing, Athens County Board of MRDD, 2009.
55. Parsons, D., \$4,482, Therapy Speech and Hearing, Meigs County MRDD, 2009.
56. Parsons, D., \$5,925, Therapy Speech and Hearing, Meigs County Department of Health, 2009.
57. Parsons, D., \$8,473, Therapy Speech and Hearing, Vinton County Health Department, 2009.
58. Rose-Grippa, K., \$265,531, Grow Our Own—Advanced Education Nursing Program, HRSA, 2009.

59. Russ, D., \$7,681, Muscular responses to Spring-Analogue Training with Electrical Stimulation, Ohio University Research Committee, 2009.
60. Ryan, T., \$14,573, Pilot Project of M-Learning Efficacy and Assessment Approaches in the Applied Sciences, 1804 Award, 2009.
61. Starkey, C., \$9,250, Athletic Training Services for Area High Schools, Various, 2009.
62. Starkey, C., \$112,187, Athletic Training Services for Area High Schools, Various, 2009.
63. Williams, P., \$19,100, Media Enhancement of Graduate Student Instruction and Clinical Research for Observational Movement Analysis, 1804 Award, 2009.
64. Wilson, M., & Kushnick, M., \$600, Effects of Eating a Low and High Glycemic Index Meal after Exercise on Fat Oxidation, The Provost's Undergraduate Research Fund, Ohio University, 2009.
65. Xu, L. & Zhou, N., \$39,063, Ruth L. Kirschstein National Research Service Award, Music and Tone Perception and Dichotic Stimulation, National Institutes of Health, 2009.
66. Xu, L., \$4,000, Tone Perception and Production and Vocal Singling with HIRes 120 Speech-Processing Strategy in Mandarin-Speaking Children, Advanced Bionics Corp, 2009.

Grants and Contracts Awarded¹⁴

(July 1, 2009 to June 30, 2010)

1. Althaus, R. A., \$7,983, Athens Mental Health Center: Final Years in its Community Context, Ohio University Research Committee, 2010.
2. Benigno, J., \$7,796, Effect of Event Knowledge on Children's Language Production, Ohio University Research Committee, 2010.
3. Brannan, R., \$21,000. Food Applications of Multifunctional Dietary Fibers, Z Trim Holdings, Inc., 2010.
4. Chleboun, G., \$10,000, Ultrasound Imaging of Lumbar Spine Flexion and Extension, International Mechanical Diagnosis and Therapy Research Foundation, 2010.
5. Clark, B. (PI), Howell, J., Thomas, J., & Walkowski, \$84,871, Neurophysiologic Effects of Manipulative Treatment of Individuals with Subacute Back Pain, Osteopathic Heritage Foundation, 2010.
6. Denham, S., \$5,000, Improving Diabetes Outcomes in the Appalachian Region, Ohio Department of Health, 2010.
7. Denham, S., \$190,000, Dissemination and Evaluation of Diabetes: A Family Matter, Centers for Disease Control and Prevention, 2010.
8. Denham, S., \$300, Diabetes Conference, Roche Diagnostics Corp, 2010.
9. Denham, S., \$350, Diabetes Conference, Sanofi-Aventis LLC, 2010.

¹⁴ See footnotes 10 and 11 above.

10. Hallowell, B., \$208,000, MA Internship Program, Ohio Master's Network Initiative in Education (OMNIE), 2010.
11. Hallowell, B., \$19,261, Annual Review of NSF-Sponsored Biomedical Engineering Senior Design Projects to Aid Persons with Disabilities, National Science Foundation via University of Connecticut, 2010.
12. Holben, D., \$3,750, The ECOhio GARDEN Project: Fulbright, Foundation for Educational Exchange Between Canada and the USA, 2010.
13. Howard, S., \$50,000, Maternal and Child Health in Muslim Africa, American Council on Education, 2010.
14. Jensen-Besaw, D., \$75,000, Fun and Service Together, Corporation for National and Community Service (CNCS), 2010.
15. Jensen-Besaw, D., \$177,530, Trimble Local School District, 21st Century, 2010.
16. Jensen-Besaw, D., \$179,969, Athens City Schools, 21st Century, 2010.
17. Jensen-Besaw, D., \$181,000, Federal Hocking Schools, 21st Century, 2010.
18. Jensen-Besaw, D., \$7,000, Be Bold: Kids on Campus 2010 Summer Program (Nurse's Station), Sisters of Saint Joseph Charitable Fund, 2010.
19. Kim, Y., \$7,758, Biomechanical Effects of Neuromuscular Electrical Stimulation (NMES) Intervention in Chronic Dysphagia Patients, Ohio University Research Committee, 2010.
20. LC Technologies, & Hallowell, B., \$670,955, Eyetracking Comprehension Assessment System (ECAS): Improving validity of comprehension assessment for people with brain injury. SBIR Award, National Institutes of Health/National Institute on Deafness and Other Communication Disorders, 2010.
21. Malawista, M., \$720, Therapy Speech and Hearing, Echoing Meadows, 2010.
22. Malawista, M., \$14,600, Therapy Speech and Hearing, Morgan County School, 2010.
23. Malawista, M., \$264, Therapy Speech and Hearing, Christ United Methodist Preschool, 2010.
24. Malawista, M., \$456, Therapy Speech and Hearing, Redeemer Lutheran School, 2010.
25. Malawista, M., \$720, Therapy Speech and Hearing, Echoing Meadows Residential Center, 2010.
26. Malawista, M., \$14,600, Therapy Speech and Hearing, Morgan County School, 2010.
27. McAvoy, D. (PI), Potkanowicz E. S., Hallowell B., & Schwerha, D. \$170,000, MRI-R2: Acquisition of a Synergistic Driving Simulator, National Science Foundation (ARRA), 2010.
28. Meier, R., \$27,307, Community Outreach for Hearing Healthcare Services in Southeast Ohio, Baxter Foundation, 2010.
29. Morrone, M., \$50,000, Public Outreach and Support and Solutions to Energy and Environmental Issues at the Gaseous Diffusion Plant in Piketon, Ohio, Department of Energy, 2010.
30. Morrone, M., \$450,000, Public Outreach and Support and Solutions to Energy and Environmental Issues at the Gaseous Diffusion Plant in Piketon, Ohio, Department of Energy, 2010.

31. Murray, T., \$174,153, HeartWorks, O'Bleness Memorial, 2010.
32. Oh, H.-J., \$1,500, Physical Activity Patterns and Body Composition in School Youth Living in Rural Areas of Southeastern Appalachian Ohio, Ohio Association for Health, Physical Education, 2010.
33. Overby, A., \$5,444, Therapy Physical Therapy, Echoing Meadows Residential Center, 2010.
34. Overby, A., \$571,752, Therapy Physical Therapy, O'Bleness Memorial, 2010.
35. Overby, A., \$1,374, Therapy Physical Therapy, Athens County Board of MRDD, 2010.
36. Overby, A., \$10,570, Therapy Physical Therapy, Hocking County Board MRDD, 2010.
37. Overby, A., \$11,072, Therapy Physical Therapy, Meigs County, 2010.
38. Overby, Averell, \$73,733, Therapy Physical Therapy, Buckeye Hills BHCC, 2010.
39. Rose-Grippa, K., \$275,832, Grow Our Own—Advanced Education Nursing Program, Health Research Services Administration, 2010.
40. Starkey, C., \$9,300, Athletic Training Services for Area High Schools, Various, 2010.
41. Starkey, C., \$10,100, Athletic Training Services for Area High Schools, Various, 2010.
42. Starkey, C., \$168,500, Athletic Training Services for Area High Schools, Various, 2010.
43. Xu, L., \$18,408, Ruth L. Kirschstein National Research Service Award, Music and Tone Perception and Dichotic Stimulation, National Institutes of Health, 2010.

Scholarship and Creative Activity

THESES AND DISSERTATIONS IN 2009

1. Bissett, Rachel. (M.S. Nutrition). As Assessment of the Research Chefs Association's Core Competencies for Practicing Culinologists. R. G. Brannan (Director), F. Meng, & G. Johansen.
2. Buckner, Porsche. (2009, M.S. Family Studies). Racial Identity of African American Adoptees: A Comparative Study of Adoptees in Caucasian Families and African-American Families. R. Lee (Director), M. M. Manoogian, & J. Weston.
3. Ensign, Kristine. (2009, M.S. Athletic Training). Heterosexual Athletic Trainers' Attitudes Toward Lesbian, Gay Men, and Bisexual Athletes in the National Collegiate Athletic Association. K. White (Director), A. Yiamouyiannis, & D. Ridpath.
4. Finney, Misha. (2009, M.A., Hearing, Speech and Language Sciences). Simulating Specific Language Impairment: Effects of Sentence Length and Input Rate on Complex Sentence Comprehension. J. Montgomery (Director), S. A. Marinellie, & J. Benigno.

5. Guenther (Wilson), Elizabeth. (2009, M.S. Physiology of Exercise). Prediction of One Repetition Maximum Bench Press from Push-Ups in College Aged Females. S. R. Rana (Director), R. Gilders, & S. Bullard.
6. Harwood, Tara Mary. (2009, M.S. Physiology of Exercise). School Based Exercise and Nutrition Intervention: Effects on Health Measures in Rural Children. R. Gilders (Director), D. H. Murray, D. E. Berryman, M. Hagerman, & F.C. Hagerman.
7. Hazen, Crystal. (2009, M.S. Nutrition). Food Security and Produce Intakes and Behaviors of Impoverished Women with Children Living in Appalachian Ohio. D. H. Holben (Director), M. M. Manoogian, & R. G. Brannan.
8. Heuer, Sabine. (2009, PhD, Speech-Language Science). A New Eye-Tracking Method to Assess Attention Allocation in Individuals With and Without Aphasia Using a Dual-Task Paradigm. B. Hallowell (Director), A. V. Sergeev, J. McCarthy, & D. R. Moates.
9. Ivanova, Maria. (2009, PhD, Speech-Language Science). Addressing Confounding Factors in the Study of Working Memory in Aphasia: Empirical Evaluation of Modified Tasks and Measures. B. Hallowell (Director), A. V. Sergeev, J. Montgomery, & D. R. Moates.
10. Luce, Cara. (M.S. Family Studies). Appalachian Women's Expectations and Experiences of Fatherhood in Low-Income Families: A Life Course Perspective. M. M. Manoogian (Director), J. M. Chabot, & F. Dopfer.
11. Lusic, Melissa. (2009, M.S. Nutrition). The Effects of a Nutrition Education and Physical Activity Intervention on Metabolic Syndrome in At-Risk Children in an Appalachian Community. D. E. Berryman (Director), J. Shubrook, & D. H. Murray.
12. Magon, Vishakha. (2009, M.S. Nutrition). Body Composition and Adipokine Production in Growth Hormone Antagonist Mice. D. E. Berryman (Director), S. Okada, & F. Meng.
13. Oommen, Elizabeth. (2009, M.A. Speech-Language-Hearing Sciences). Effects of Bolus Consistency and Volume on Temporal Measurements of Pharyngeal Swallowing in Poststroke Patients. Y. Kim (Director), J. Horner, & J. McCarthy.
14. Teeters, Melissa. (2009, M.S. Nutrition). Obesity and Health Risk Factors for Employees at a Major University in Rural Appalachian Ohio. D. E. Berryman (Director), D. H. Holben, & G. Brannan.
15. Vardell, Marjorie. (2009, M.S. Nutrition). Farm at the Pantry: Improving Access to Fresh Produce by Low-Income, Appalachian Families at Food Pantries in the Region. D. H. Holben (Director), D. E. Berryman, & G. Johansen.
16. Zhai, Yufeng. (2009, M.S. Nutrition). Optimizing Low Carbohydrate Diets to Promote Weight Loss in Mice. D. E. Berryman (Director), E. O. List, S. Okada, & D. H. Holben.
17. Zurmehly, Ashley. (2009, M.S. Nutrition). Use of a Gardening and Nutrition Education Program to Improve the Produce Intake of School Age Children Living in Appalachian Ohio. D. H. Holben (Director), J. M. Chabot, & D. H. Murray.

PUBLICATIONS IN 2009

1. **Basta, T.**, Shacham, E. & Reece, M. (2009). Symptoms of psychological distress: A comparison of rural and urban individuals enrolled in HIV-related mental health care. *AIDS Patient Care and STDs*, 23(12), 1053-1057.
2. **Berryman, D. E.**, List, E. O., Palmer, A. J., Chung, M.Y., Wright-Piekarski, J., Lubbers, E., O'Connor, P., Okada, S., & Kopchick, J. J. (2009, November 9). Two-year body composition analyses of long-lived GHR null mice. *Journals of Gerontology Series A: Biological Sciences and Medical Sciences*. Epub ahead of press PMID: 19901018.
3. Bletzacker, K., **Holben, D. H.**, & Holcomb, J. P. (2009). Poverty and proximity to food assistance programs are inversely related to community food security in an Appalachian Ohio region. *Journal of Hunger and Environmental Nutrition*, 4(2), 172-184.
4. **Brannan, R. G.** (2009). Effect of grape seed extract on descriptive sensory analysis and physical properties of ground chicken during refrigerated storage. *Meat Science*, 81, 589-595.
5. **Brannan, R. G.**, & Salabak, D. E. (2009). Ability of methanolic seed extracts of pawpaw (*Asimina tribloba*) to inhibit n-3 fatty acid oxidation initiated by peroxy radicals and reactive oxygen, nitrogen, and sulfur. *Food Chemistry*, 114, 253-258.
6. Busfield, B., Kharrazi, F. D., **Starkey, C.**, Lombardo, S., & Seegmiller, J. (2009). Performance outcomes of anterior cruciate ligament reconstruction in the National Basketball Association. *Arthroscopy*, 25, 825-830.
7. **Chelboun, G. S.** (2009). Therapists' comments. In R. L. Lieber (Ed.), *Skeletal muscle: Structure, function and plasticity* (3rd ed.). Baltimore: Williams & Wilkins.
8. Clagg, S., Warnock, A. W., & **Thomas, J. S.** (2009). Kinetic analyses of maximal effort soccer kicks in college female athletes. *Sports Biomechanics*, 8(2), 141-153.
9. Clark, B. C., Manini, T. M., Hoffman, R. L., & **Russ, D. W.** (2009). Restoration of voluntary muscle strength following 3-weeks of cast immobilization is suppressed in women compared to men. *Archives of Physical Medicine and Rehabilitation*, 90(1), 178-180.
10. **Denham, S. A.** (2009). Diabetes: A family matter. *Journal of Family Nursing*, 15(3), 400-401.
11. **Denham, S. A.**, & Looman, W. (December, 2009). Chronic illness. In J. R. Kaakinen, V. Gedaly-Duff, D. Coehlo, & S. M. H. Hanson (Eds.), *Family health care nursing: Theory, practice, & research* (4th ed., pp. 235-272). Philadelphia, PA: F.A. Davis, Company.
12. Doeringer, J. R., **Krause, B. A.**, & Hoch, M. A. (2009). Focal ankle cooling facilitates spinal reflex activity in subjects with functional ankle instability. *Athletic Training and Sports Health Care*, 1(2), 59-64.

13. **Driscoll, E.** (2009). Ancillaries and Instructor's Manual. For C. Starkey, S. Brown, & J. Ryan (Eds.). (2009). *Examination of orthopedic and athletic injuries* (3rd ed.). Philadelphia, PA: F. A. Davis, Company.
14. Elliott, J., MacLellan, A., Saini, S. K., Chan, J., **Scott, S. A.**, & Kawaja, M. D. (2009, February 18). Transgenic mice expressing nerve growth factor in smooth muscle cells. *Neuroreport*, *20*(3), 223-227.
15. Enemark, E. A., Seegmiller, J. G., & **Rana, S. R.** (2009). Physiologic profile of women's LaCrosse players. *The Journal of Strength & Conditioning Research*, *23*(1), 39-43.
16. Farrar, M. J., Johnson, B. W., Holloway, V., Easters, M., & **Benigno, J. P.** (2009). Language and theory of mind in preschool children with Specific Language Impairment. *Journal of Communication Disorders*, *42*, 428-441.
17. Gillam, R. B., **Montgomery, J. W.**, & Gillam, S. L. (2009). Attention and memory in children with language disorders. In R. Schwartz (Ed.), *Handbook of language disorders* (pp. 201-215). New York: Psychology Press.
18. **Hallowell, B.**, & Ivanova, M. V. (2009). Development and standardization of a multiple-choice test of auditory comprehension for aphasia in Russian. *Journal of Medical Speech-Language Pathology*, *2*, 83-98.
19. Han, D., Liu B., Zhou, N., Chen, X., Kong, Y., Liu, H., Zheng, Y., & **Xu, L.** (2009). Lexical tone perception with HiResolution and HiResolution 120 sound-processing strategies in pediatric Mandarin-speaking cochlear implant users. *Ear and Hearing*, *30*, 169-177.
20. Harris, G. G., & **Brannan, R. G.** (2009). An evaluation of antioxidant compounds, reducing potential, and radical scavenging of pawpaw (*Asimina tribloba*) fruit pulp from different stages of ripeness. *Lebensmittel-Wissenschaft und -Technologie (LWT): Food Science and Technology*, *42*, 275-279.
21. Heuer, S., & **Hallowell, B.** (2009). Visual attention in a multiple-choice task: Influences of image characteristics. *Aphasiology*, *23*(3), 351-363.
22. Hoch, M. A., & **Krause, B. A.** (2009). Intersession reliability of the H:M ratio is greater than the H-reflex at a percentage of M-max. *International Journal of Neuroscience*, *119*(3), 345-352.
23. Hoch, J., White, K., **Krause, A.**, & **Starkey, C.** (2009). Delegation and empowerment in CAATE accredited athletic training education programs. *Athletic Training Education Journal*, *4*, 139-143.
24. **Horner, J.**, Schwarz, I., Jackson, R., Johnstone, P., Mulligan, M., Roberts, K., & Sohlberg, M. M. (2009). Developing an "essential functions" rubric: Purposes and applications for speech-language-hearing academic programs [Commentary]. *Journal of Allied Health*, *38*, 242-247.
25. Horodyski, M., & **Starkey, C.** (Eds.). (2004). *Laboratory activities for therapeutic modalities* (3rd ed.). Philadelphia: F. A. Davis, Company. (*Laboratory activities for therapeutic modalities* (2009, 3rd ed.) was published in a Taiwanese language version.)

26. Ikeno, Y., Hubbard, G. B., Lee, S., Cortez, L. A., Lew, C. M., Webb, C. R., **Berryman, D. E.**, List, E. O., Kopchick, J. J., & Bartke, A. (2009) Reduced incidence and delayed occurrence of fatal neoplastic diseases in growth hormone receptor/binding protein (GHR/BP) gene disrupted mice. *Journals of Gerontology Series A: Biological Sciences and Medical Sciences*, 64(5), 522-529.
27. Ivanova, M. V., & **Hallowell, B.** (2009). Short form of the *Bilingual Aphasia Test* in Russian: Psychometric data of persons with aphasia. *Aphasiology*, 23(5), 544–556.
28. **Janson, G. R.**, Carney, J.V., Hazler, R.J., & Oh, I. (2009). Bystanders' reactions to witnessing repetitive abuse experiences. *Journal of Counseling and Development*, 87, 319-326.
29. **Jeng, F.-C.**, Abbas, P. J., Hu, N., Miller, C. A., Nourski, K. V., & Robinson, B. K. (2009). Effects of temporal properties on compound action potentials in response to amplitude-modulated electric pulse trains in guinea pigs. *Hearing Research*, 247(1), 47-59. doi: 10.1016/j.heares.2008.10.007
30. Jones, S., **Henderson, D.**, & Sealover, P. (2009). Clickers in the classroom. *Teaching and Learning in Nursing*, 41(1), 2-5.
31. Kaakinen, J. R., Hanson, S. M. H., & **Denham, S. A.** (December, 2009). Family health care nursing: An introduction. In J. R. Kaakinen, V. Gedaly-Duff, D. Coehlo, & S. M. H. Hanson (Eds.), *Family health care nursing: Theory, practice, & research* (4th ed., pp. 3-33). Philadelphia, PA: F.A. Davis, Company.
32. Kanjanawetang, J., Yuniphand, J., Chaiyawat, W., Wu, Y. B., & **Denham, S. A.** (2009). Thai family health routines: Scale development and psychometric testing. *Southeast Asian Journal of Tropical Medicine and Public Health*, 40(3), 629-643.
33. **Kim, Y.** (2009). Temporal and biomechanical measurements of upper esophageal sphincter (UES) opening in normal swallowing. *Korean Journal of Communication Disorders*, 14(1), 108-114.
34. King, M. A., & **Janson, G. R.** (2009) First do no harm: Emotional maltreatment in the classroom. *Early Childhood Education Journal*, 37, 1-4.
35. **Krause, B. A.**, Hoch, M. C., Doeringer, J. R., & Sheets, C. (2009). Hypohydration does not alter the soleus Hoffmann reflex. *International Journal of Neuroscience*, 119, 1693-1704.
36. **Lee, C.-Y.** (2009). Identifying isolated, multispeaker Mandarin tones from brief acoustic input: A perceptual and acoustic study. *Journal of the Acoustical Society of America*, 125, 1125-1137.
37. **Lee, C.-Y.**, Tao, L., & Bond, Z. S. (2009). Speaker variability and context in the identification of fragmented Mandarin tones by native and non-native listeners. *Journal of Phonetics*, 37, 1-15.

38. List, E. O., Palmer, A. J., **Berryman, D. E.**, Bower, B., Kelder, B., & Kopchick, J. J. (2009). Growth hormone improves body composition, fasting blood glucose, glucose tolerance and liver triacylglycerol in a mouse model of diet-induced obesity and type 2 diabetes. *Diabetologia*, *52*(8), 1647-1655.
39. Longo, K. A., **Berryman, D. E.**, Kelder, B., Charoenthongtrakul, S., Distefano, P. S., Geddes, B. J., & Kopchick, J. J. (2009, September 9). Daily energy balance in growth hormone receptor/binding protein (GHR *-/-*) gene-disrupted mice is achieved through an increase in dark-phase energy efficiency. *Growth Hormone & IGF Research*. Epub ahead of print PMID: 19747867.
40. Mah, E., & **Brannan, R. G.** (2009). Reduction of oil absorption in deep-fried, battered, and breaded chicken patties using whey protein isolate as a post-breading dip: Effect on flavor, color, and texture. *Journal of Food Science*, *74*(1), s9-s16.
41. Magimairaj, B., **Montgomery, J., Marinellie, S., & McCarthy, J.** (2009). Relation of three mechanisms of working memory to children's complex span performance. *International Journal of Behavioral Development*, *33*(5), 460-469.
42. **Marinellie, S. A.** (2009). The content of children's definitions: The oral-written distinction. *Child Language Teaching and Therapy*, *25*(1), 89-102.
43. **McCarthy, J.** (2009). Supplementary online material: Potential and precautions. *Augmentative and Alternative Communication*, *25*(1), 4-6.
44. **McCarthy, J. W.** (2009). Grouping AAC symbols by color can influence the performance of children with and without Down syndrome. *Evidence-Based Communication Assessment and Intervention*, *3*(2), 96-101.
45. McDonald, T. G., **Scott, S. A.**, Kane, K. M., & Kawaja, M. D. (2009, February 9). Proteomic assessment of sympathetic ganglia from adult mice that possess null mutations of exonIII or exonIV in the p75 neurotrophin receptor gene. *Brain Research*, *1253*, 1-14.
46. Miller, C. A., Abbas, P. J., Robinson, B. K., Nourski, K. V., Zhang, F., & **Jeng, F.-C.** (2009). Auditory nerve fiber responses to combined acoustic and electric stimulation. *Journal of the Association for Research in Otolaryngology*, *10*, 425-445. doi: 10.1007/s10162-008-0154-7
47. **Montgomery, J., & Evans, J.** (2009). Complex sentence comprehension and working memory in children with specific language impairment. *Journal of Speech, Language and Hearing Research*, *52*, 269-288.
48. **Montgomery, J., Evans, J., & Gillam, R.** (2009). Relation of auditory attention and complex sentence comprehension in children with specific language impairment: A preliminary study. *Applied Psycholinguistics*, *30*, 123-151.
49. **Montgomery, J., Polunenko, A., & Marinellie, S.** (2009). The role of working memory in children's understanding spoken narratives. *Applied Psycholinguistics*, *30*, 485-509.

50. **Morrone, M.** (2009). Book Review [Review of the book *Epidemiologic principles and food safety*, T. Lasky, Ed., 2007]. *Risk Analysis*, 29(5), 780-781. doi: 10.1111/j.1539-6924.2009.01225.x
51. **Morrone, M.**, Stuart, B., McHenry, J. I., & Buckley, G. (2009). The challenges of biofuels from the perspective of small-scale producers In Ohio. *Energy Policy*, 37, 522-530.
52. **Morrone, M.**, Tres, A., & Aronin, R. (2005). Creating effective messages about environmental health. *Journal of Environmental Health*, 68(1), 9-14.
53. Odekar, A., **Hallowell, B.**, Kruse, H., Moates, D. R., & **Lee, C.-Y.** (2009). Validity of eye movement methods and indices for capturing semantic (associative) priming effects. *Journal of Speech, Language, and Hearing Research*, 52(1), 31-48.
54. Oursler, K. K., Katzel, L. I., Smith, B. A., Scott, W. B., **Russ, D. W.**, & Sorkin, J. D. (2009). Prediction of cardiorespiratory fitness in older HIV-infected men: Clinical factors and value of the six-minute walk distance. *Journal of the American Geriatrics Society*, 57(11), 2055-2061.
55. Palmer, A. J., Chung, M. Y., List, E. O., Walker, J., Okada, S., Kopchick, J. J., & **Berryman, D. E.** (2009). Age-related changes in body composition of bovine growth hormone transgenic mice. *Endocrinology*, 150(3), 1353-1360.
56. **Paschold, H. W.**, & **Sergeev, A. V.** (2009). Whole-body vibration knowledge: Survey of US occupational safety and health professionals. *Journal of Safety Research*, 40(3), 171-176.
57. **Potkanowicz, E.**, Hartman-Stein, P., Biermann, J. (2009, September). Behavioral determinants of healthy aging revisited: An update on the good news for the baby boomer generation. *OJIN: Online Journal of Issues in Nursing*, 14(3). doi: 10.3912/OJIN.Vol14No03PPT01
58. Rathbun, A., & **Denham, S. A.** (2009). Evaluating health literacy and information: A study of Appalachian counties [White paper]. Available from *Diabetes: A Family Matter* at <http://www.diabetesfamily.net>
59. **Ries, D. R.**, & **DiGiovanni, J. J.** (2009). Effects of recurrent tonal information on auditory working memory for pitch. *Hearing Research*, 255, 14-21.
60. **Russ, D. W.** (2009). Sex differences in muscle fatigue. In S. Ratel & C. Williams (Eds.), *Human muscle fatigue* (pp. 135-164). London: Routledge Publishing. ISBN # 978-0415453271.
61. **Russ, D. W.**, Ruggeri, R. G., & **Thomas, J. S.** (2009). Central activation and force-frequency responses of the lumbar extensor muscles. *Medicine & Science in Sports & Exercise*, 41(7), 1504-1509.
62. **Ryan, T.** (2009). Environmental health and safety in colleges and universities. In G. Byrns (Ed.), *Hazards recognition and control in institutional settings: A guide for hospitals, universities, and nursing homes* (pp. 335-363). Des Plaines, IL: American Society of Safety Engineers.

63. Shacham, E., **Basta, T.**, & Reece, M. (2009). The relationship of sexual risk factors and psychological distress among HIV-infected individuals at a mental health clinic. *Journal of International Association of Physicians in AIDS Care*, 8(9), 93-99.
64. Schwartz, F., Isaac, S., Ruhil, A., Yoder, R., Shubrook, J., **Denham, S.**, & Simpson, C. (2009). The high prevalence of diabetes mellitus and atherosclerosis in Appalachian Ohio. *Journal of Rural Health*, 25(2), 226-230.
65. Smith, J. L., **McCarthy, J. W.**, & **Benigno, J.** (2009). The effect of high-tech AAC system position on the joint attention of infants without disabilities. *Augmentative and Alternative Communication*, 25(3), 165-175.
66. **Starkey, C.** (2009). Foreword. In K. L. Knight & K. Brumels (Eds.), *Developing athletic training clinical proficiency: A modular approach* (4th ed.). Champaign, IL: Human Kinetics Publishers.
67. **Starkey, C.** (2009). Foreword. In T. Weidner (Ed.). *The athletic trainer's pocket guide to clinical teaching*. Thorofare, NJ: Slack, Inc.
68. **Starkey, C.** (Consulting ed.). (2009). Athletic Training, Sports Medicine, Orthopedics, Rehabilitation, Computers, and Miscellaneous Sections. In D. Venes (Ed.), *Taber's cyclopedic medical dictionary* (21st ed.). Philadelphia: F. A. Davis, Company.
69. **Starkey, C.**, Brown, S. D., & Ryan, J. L. (2009). *Examination of orthopedic and athletic injuries* (3rd ed.). Philadelphia: F. A. Davis. Philadelphia: F. A. Davis, Company.
70. **Starkey, C.**, Brown, S., & Ryan, J. (2009). *Orthopedic and athletic injury evaluation handbook* (2nd ed.). Philadelphia: F. A. Davis, Company.
71. Stephens, J. H., **Sergeev, A. V.**, & Platonova, E. A. (2009). Russia [health systems by country]. In J. A. Johnson & C. H. Stoskopf (Eds.), *Comparative health systems: Global perspectives* (pp.167-185). Boston: Jones and Bartlett Publishers.
72. **Stretton D. V.**, & **Bolon, D. S.** (2009). Recruitment and retention of rural hospital administrators: A multi-faceted approach. *Hospital Topics*, 87(1), 10-14.
73. Tanda, R., & **Denham, S. A.** (2009). Clinical instruction and student outcomes. *Teaching and Learning in Nursing*, 4, 139-147.
74. Thorner, M. O. ... **Berryman D. E.** et al. (2009). Statement by the growth hormone research society on GH/IGF-1 axis in extending health span. *Journals of Gerontology Series A: Biological Sciences and Medical Sciences*, 64(10), 1039-1044.
75. Trost, Z., France, C. R., & **Thomas, J. S.** (2009). Examination of the photographic series of daily activities (PHODA) scale in chronic low back pain patients with high and low kinesiophobia. *Pain*, 141(3), 276-282. PMID: 19131166.
76. Umbel, J. D., Hoffman, R. L., Dearth, D. J., **Chleboun, G. S.**, Manini, T. M., & Clark, B. C. (2009). Delayed-onset muscle soreness induced by low-load blood flow-restricted exercise. *European Journal of Applied Physiology*, 107, 687-695.

77. Venkatachalam, M., **Kushnick, M.**, Zhang, G., & Hamaker, B. (2009). Novel slowly digestible carbohydrate ingredients: Glycemic- and insulinemic response. *Journal of American College of Nutrition*, 28(5), 583-590.
78. Ward, J., Schaal, M., Sullivan, J., **Bowen, M. E.**, Erdmann, J. B., & Hojat, M. (2009). Reliability and validity of the Jefferson Scale of Empathy in undergraduate nursing students. *Journal of Nursing Measurement*, 17(1), 73-88.
79. **Williams, P. S.**, & Clark, B. C. (2009). Electromyography in the 21st century: From voluntary signals to motor evoked potentials. In J. H. Levy (Ed.), *Biomechanics: Principles, trends and applications* (pp. 207-232). Hauppauge, NY: Nova Science Publishers. ISBN: 978-1-60741-394-3.
80. **Xu, L.**, Zhou, N., Chen, X., Li, Y., Zhao, X., Han, D. (2009). Vocal singing by prelingually deafened children with cochlear implants. *Hearing Research*, 255, 129-134.

PRESENTATIONS IN 2009

(Including Published Abstracts of Posters/Presentations)¹⁵

1. **Althaus, R. A.**, Connolly, P., & Brinkman, A. (2009, March). *But what is the other side? Secrets of writing ethics cases*. Paper presented at the meeting of the Association for Practical and Professional Ethics, San Diego, CA.
2. **Althaus, R. A.**, & Rosenbloom, A. (2009, July). *Stakeholder theory as an organizing principle*. Paper presented at the meeting of the World Association for Case Method Research and Application, Vancouver, BC.
3. Argawal, P., Hanson, R., Reece, A., Oommen, B., Vild, T., Gockley, B., & **Benigno, J. P.** (2009, March). *Executive function skills in internationally adopted children*. Poster presented at the annual meeting of the Ohio Speech-Language-Hearing Association, Columbus, OH.
4. **Basta, T.**, Shacham, E., & Reece, M. (2009). Symptoms of psychological distress and sexual orientation: A comparison between LGBT and heterosexual individuals living with HIV/AIDS who self enrolled in HIV-related mental health care. Presented at annual meeting of the American Public Health Association, Philadelphia, PA.
5. **Basta, T.**, Hunt, A., & Sherman, K. (2009). Use of science-based approaches: Results from the Illinois Adolescent Sexual Health Needs Assessment. Presented at the annual meeting of the American Public Health Association, Philadelphia, PA.

¹⁵ Abstracts of posters or presentations are published in conference programs; or, alternatively, in journal supplements (the latter are distinguished in this report by the inclusion of journal name, volume and page number).

6. **Basta, T.** & Della, L. (2009). Negative self-image and diabetes in Appalachian Kentucky: Implications for local public health officials. Presented at the annual meeting of the American Public Health Association, Philadelphia, PA.
7. Bennett, J., Smith, J., **Benigno, J. P.**, & **McCarthy, J. W.** (2009, March). *Individual differences and joint attention in infants without disabilities and AAC systems*. Poster presented at the annual meeting of the Ohio Speech-Language-Hearing Association, Columbus, OH.
8. **Berryman, D. E.** (2009, December 11). *Body composition of GH mouse models as a function of aging*. Invited paper presented at the Pfizer Conference. Athens OH: Edison Biotechnology Institute.
9. **Berryman, D. E.** (2009, May 14). *Body composition changes in mice with altered GH function*. Invited paper presented at the Endo Retreat, Rotterdam, NL: Erasmus Medical Center.
10. **Berryman, D. E.** (2009, May 18). *Body composition changes in mice with altered GH function*. Invited paper presented at the First International Joint Meeting on Obesity Research, Universidad Autonoma de Madrid: Hospital Infantil Universitario Nino Jesus.
11. **Berryman, D. E.** (2009, December 11). *GH mouse models, adipose depot differences, adipokines*. Invited paper presented at the Pfizer Conference. Athens OH: Edison Biotechnology Institute.
12. Bissett, R. L., Cheng, M. S. H., & **Brannan, R. G.** (2009). *An assessment of the research chef's association's core competencies for practicing culinologists*. Paper presented at the Research Chef's Association Annual Conference and Food Expo, Dallas, TX.
13. Bosa, I., & **Althaus, R. A.** (2009, June). *Impact of funding schemes on communication and structure in delivering integrated medical and social services in rural home care: Italy and USA*. Paper presented at the meeting of the European Health Management Association, Innsbruck, Austria.
14. **Bowen, M.** (2009, April 16-19). *Building a healthier nation through cultural competence in nurse practitioner curriculums*. Paper presented to the 34th annual meeting of National Organization of Nurse Practitioner Faculties, Building a Stronger Tomorrow for Nurse Practitioner Education, Portland, OR.
15. **Bowen, M.** (2009, July 13-17). *Evidence based cultural competence in an advance practice nursing curriculum*. Paper presented at the 20th annual meeting of the International Nursing Research Congress Focusing on Evidence Based Practice, Vancouver, CAN.
16. Bower, B., Zhai, Y., Zacharias, A., Blishcak, J. D., Wright-Pierkarski, J., **Berryman, D. E.**, Kopchick, J. J., & List, E. O. (2009). *Growth hormone treatment in lean nondiabetic versus obese type 2 diabetic mice*. Poster presented at the 91st annual meeting of the Endocrine Society, Washington, DC.

17. **Brannan, R. G.** (2009). *Sulfur-centered radicals induce oxidation in 22:6 PC liposomes and skeletal muscle homogenate*. Paper presented at the annual meeting of the Institute of Food Technologists, Anaheim, CA.
18. **Brannan, R. G.**, Mah, E., Schott, M., & Myers, A. S. (2009). *Functional protein solutions from whey and egg inhibit oil pickup in fully fried, battered, and breaded products*. Paper presented at the meeting of the 7th Euro Fed Lipid Congress, Graz, Austria.
19. **Chleboun, G. S.**, McGhee, E. J., Miles, K. A., & Siefker, K. M. (2009). *Vastus lateralis fascicle, muscle-tendon complex, and tendon length during three resistance training exercises* [Abstract]. *Medicine & Science in Sports & Exercise*, 41(5), S413.
20. Cooley, J., **Benigno, J. P.**, & **McCarthy, J. W.** (2009, March). *Introducing augmentative and alternative communication: Effects of communication profile and device placement on children with autism*. Poster presented at the annual meeting of the Ohio Speech-Language-Hearing Association, Columbus, OH.
21. Costello, B., Wilson, M., Hagen, A., Gibb, A., Kaya, R., Knutson, M., McGlynn, M., Guiler, M., Vance, R., Shubrook, J., & **Kushnick, M.** (2009). *Perception of hunger and satiety in response to ingestion of glucose and a novel extended-release carbohydrate*. Paper presented at the Research and Creativity Showcase, Ohio University (May; first place award for presentation, undergraduate); College of Health and Human Services Faculty Showcase, Ohio University (June); Diabetes Research Initiative Meeting, Ohio University (June).
22. Dearth, D. J., Umbelm J., Hoffman, R. L., **Russ, D. W.**, Wilson, T., & Clark, B. C. (2009, May). Influence of fatigue-induced muscle afferent stimulation on motor evoked potentials [Abstract]. *Medicine & Science in Sports & Exercise*, 41(5), 354.
23. Della, L. & **Basta, T.** (2009). Primary diabetes prevention research: Exploring cultural barriers to prevention behavior in rural Appalachia. Presented at the Annual Centers for Disease Control and Prevention Diabetes Conference, Long Beach, CA.
24. de Groot, M., Shubrook, J., **Kushnick, M.**, McGlynn, M., Doyle, T., Merrill, J., & Schwartz, F. (2009, June). *Program ACTIVE: A combination approach to depression treatment among Appalachians with type 2 diabetes* [Abstract]. Paper presented at the meeting of the American Dietetic Association, New Orleans, LA.
25. **Denham, S. A.** (2009, April 23). *Diabetes: A family matter: A toolkit for Appalachia*. Paper presented at the Centers for Disease Control & Prevention Diabetes Translation Conference, Long Beach, CA.
26. **Denham, S. A.** (2009, June 2). *Conceptualization and development of a targeted toolkit*. Symposium conducted at the 9th International Family Nursing Conference, Reykjavik, Iceland.
27. **Denham, S. A.** (2009, July 14). *Translating diabetes evidence into a targeted culturally sensitive toolkit*. Paper presented at the 20th annual International Research Congress, Sigma Theta Tau International, British Vancouver.

28. **Denham, S. A.** (2009, October 29). *Dissemination and evaluation of a community diabetes project*. Paper presented at the West Virginia Diabetes Symposium, Charleston, WV.
29. **Denham, S. A., & Rathbun, A.** (2009, March 27). *Using the arts to deliver health messages*. Paper presented at the Appalachian Studies Association Conference, Portsmouth, OH.
30. **DiGiovanni, J. J.** (2009, October). *Hearing-aid technology and clinical practice*. Invited paper presented at the annual meeting of the Kansas Speech, Language Hearing Association, Wichita, KS.
31. **Dominguese, D. J.** (2009, April). *The effects of muscle fatigue on athletic performance and muscle skeletal injury*. Guest lecture presented at Heidelberg College, Heidelberg, OH.
32. **Dominguese, D. J., & Krause, B. A.** (2009, October). *Musculoskeletal clinical knowledge of graduate athletic training students* [Abstract]. Paper presented at the 32nd annual meeting of the Mid-Western Educational Researcher Association, St. Louis, MO.
33. Doyle, T., de Groot, M., Merrill, J., Rabideau, E., Shubrook, J., **Kushnick, M., & Schwartz, F.** (2009, June). *Program ACTIVE: Combination treatment for depression improves psychosocial outcomes in Appalachians with type 2 Diabetes* [Abstract]. Paper presented at the meeting of the Society of Behavioral Medicine, Montreal, Quebec.
34. Finney, M., & **Montgomery, J.** (2009, November). *Role of sentence rate and sentence length in sentence comprehension*. Paper presented at the annual convention of the American Speech-Language-Hearing Association, New Orleans, LA.
35. Gustwiller, S., Johnson, E., Klewer, M., McCallum, A., & **Thomas, J. S.** (2009). *The effect of discrete versus cyclic full body reaching tasks on spine and extremity joint excursions*. [Abstract]. Paper presented at the Combined Sections Meeting of the American Physical Therapy Association (APTA), Las Vegas NV.
36. **Hallowell, B.** (2009, May). *Control and description of participant characteristics in published aphasia research: 1990-2008*. Paper presented at the annual meeting of the Clinical Aphasiology Conference. Keystone, CO.
37. **Hallowell, B.,** Aarts, N. S., Brello, J., Creaghead, N. Goldstein, H., Nittrouer, S., Petrosini, L., & Visconti, C. F. (2009, March). *Strategies for enhancing collaboration in research in communication sciences and disorders in Ohio*. Paper presented at the annual convention of the Ohio Speech-Language-Hearing Association, Columbus, OH.
38. Harter, L. M., **Manoogian, M. M., & Denham, S.** (2009, November). *Socially constructing diabetes among Appalachian families*. Paper presented at the annual meeting of National Communication Association, Chicago, IL.
39. **Henderson, D.** (2009, March 27). *Getting started in simulation learning: Planning and designing*. Paper presented at the annual conference of the Ohio League for Nursing, Columbus, OH.

40. **Henderson, D.** (2009, March 27). *Implementing and evaluating simulation learning*. Paper presented at the annual conference of the Ohio League for Nursing, Columbus, OH.
41. Herman, J. R., **Gilders, R. M.**, Hagerman, F. C., Hikida, R. S., **Perry-Rana, S. R.**, Ragg, K. E., & Staron, R. S. (2009). Effect of slow-speed vs. traditional speed training regimens on myonuclear domain and satellite cell content [Abstract]. *Medicine & Science in Sports & Exercise*, 41(5), 287.
42. Herman, J. R., **Rana, S. R.**, **Chleboun, G. S.**, Gilders, R. M., Hagerman, F. C., Hikida, R. S., **Kushnick, M. R.**, Ragg, K. E., Staron, R. S., & Toma, K. (2009). *Correlation between muscle fiber cross-sectional area and strength gain using three different resistance-training programs in college-aged women* [Abstract]. Poster presented at the national conference of the National Strength and Conditioning Association. Las Vegas, NV.
43. Heuer, S., & **Hallowell, B.** (2009, May). *Using a novel dual-task eye-tracking method to assess attention allocation in individuals with and without aphasia*. Paper presented at the annual meeting of Clinical Aphasiology Conference, Keystone, CO.
44. Heuer, S., & **Hallowell, B.** (2009, November). *New assessment method of attention allocation in individuals with aphasia*. Paper presented at the annual convention of the American Speech-Language-Hearing Association, New Orleans, LA.
45. **Holben, D. H.** (2009, April 3). *Commission on Dietetic Registration Examination—Hot Topics*. Invited paper presented at the regional meeting of the Dietetic Educators of Practitioners, Indianapolis, IN.
46. **Holben, D. H.** (2009, September 25). *Why eating local is good for your health*. Invited paper presented at the Community Food Initiatives' Harvest Dinner, Athens, OH.
47. **Holben, D. H.** (Moderator & Speaker), & Hodgson, K. (2009, October 18). *The dietitian's role in transforming food environments*. Paper presented at the 2009 Food and Nutrition Conference and Expo, Denver, CO.
48. **Holben, D. H.**, Shirk, B., Wang, Y., & Taylor, C. A. (2009). Differences in rates of obesity and central adiposity in US adolescents by participation in the Supplemental Nutrition Assistance Program [Abstract]. *Journal of the American Dietetic Association*, 109, A97.
49. **Holben, D. H.**, Zurmehly, A., Jackson, L., & Holcomb, J. P. (2009). Food insecurity is associated with increased diabetes risk, obesity, and poorer perceived diet and health among women in rural Appalachian Ohio [Abstract]. *Journal of the American Dietetic Association*, 109, A96.
81. Horner, A. M., **Russ, D. W.**, & Biknevicius, A. R. (2009). Effects of aging on locomotor dynamics and hindlimb muscle force production in the rat [Abstract]. *International Computational Biology*, 49(Suppl 1), E79.
50. Hu, J., & **Jeng, F.-C.** (2009, March 5-7). *An automatic algorithm for detecting human frequency-following response to voice pitch* [Abstract, p. 20, #31]. Paper presented at the annual meeting of the American Auditory Society, Scottsdale, AZ.

51. Ivanova, M. V., **Hallowell, B.** (2009, May). *Development and empirical evaluation of a novel working memory span task for individuals with aphasia*. Paper presented at the annual meeting of the Clinical Aphasiology Conference, Keystone, CO.
52. Ivanova, M. V., **Hallowell, B.** (2009, August). *Improving assessment of working memory in aphasia*. Paper presented at the Sixth Satellite Symposium on Neuropsychological Rehabilitation, Tallinn, Estonia.
53. Jackson, L., **Holben, D. H.**, Zurmehly, A. B., & Holcomb, J. P. (2009). Food security status, gardening behaviors, and produce intake of low income women with children in Appalachian Ohio [Abstract]. *Federation of American Societies for Experimental Biology Journal*, 23, LB478.
54. **Janson, G.**, & McSteen, P. (2009, January). *Effective interventions for student mental health on campus: Collaboration & community*. Paper presented at the conference of the National Association of Student Personnel Administrators' Mental Health, Boston, MA.
55. **Jeng, F.-C.** (2009). *Frequency-following responses to voice pitch: Fundamentals and clinical applications*. Invited presentations at the China Medical University Hospital ENT Research Colloquium (two presentations on December 10 and 24 and a one-week workshop starting December 18-24), Taichung, Taiwan.
56. **Jeng, F.-C.**, Dickman, B., **Hallowell, B.**, **Ries, D.**, **Sergeev, A.**, & Schwartz, F. (2009, April 3-4). *Daily glucose fluctuation correlates to P300 latency in patients with insulin-dependent diabetes mellitus*. Poster presented at Diabetes Research Initiative Spring Retreat [Abstract, p.1, # 16], Athens, OH: Ohio University.
57. **Jeng, F.-C.**, & Schnabel, E. A. (2009, March 5-7). *Frequency-following response to voice pitch in infants* [Abstract, p. 21, #62]. Paper presented at the annual meeting of the American Auditory Society, Scottsdale, AZ.
58. **Jurich, J.** (2009, November). *Daughter and mother perspectives on education and success in low-income African American families*. Poster presented at the annual meeting of the National Council on Family Relations, San Francisco, CA.
59. **Jurich, J.** (2009, November). *Issues in adolescence*. Panel presented at the annual meeting of the National Council on Family Relations, San Francisco, CA.
60. Kelder, B., **Berryman, D. E.**, Okada, S., List, E. O., Tarnowski, M., & Kopchick, J. J. (2009). *Generation and characterization of transgenic mice expressing the human CIDE-A cDNA*. Poster presented at the 91st annual meeting of the Endocrine Society, Washington, DC.
61. **Kim, Y.** (2009). *Introduction to swallowing disorders*. Invited workshop presented at the Department of Speech Pathology, Daegue, South Korea: Daegue University.
62. **Kim, Y.** (2009). *Penetration and aspiration scale*. Invited workshop presented at the Division of Speech Pathology and Audiology, Chunchon, South Korea: Hallym University.

63. Klewer, M., Gustwiller, S., Ruggeri, R., Johnson, E., & **Thomas, J. S.** (2009). *Lumbar pelvic rhythm in discrete versus cyclic forward bending movements in healthy individuals* [Abstract]. Paper presented at the Combined Sections Meeting of the American Physical Therapy Association (APTA), Las Vegas NV.
64. Knutson, M., McGlynn, M., Guiler, M., Wilson, M., Costello, B. A., Hagen, A., Gibb, A., Vance, R., Shubrook, J., & **Kushnick, M.** (2009). *The glycemic and insulinemic response to a standard meal 4-hours after ingestion of glucose and a novel extended release carbohydrate*. Paper presented at the Research and Creativity Showcase, Ohio University (May; first place award for presentation, graduate); College of Health and Human Services Faculty Showcase, Ohio University (June); Diabetes Research Initiative Meeting, Ohio University (June).
65. Knutson, M., McGlynn, M., Costello, B., Wilson, M., Hagen, A., Porter, M., Forshey, J., Traylor, A., Vance, R., Shubrook, J., & **Kushnick, M.** (2009, October). *The glycemic and insulinemic response to a standard meal 4-hours after ingestion of glucose and a novel extended release carbohydrate* [Abstract]. Paper presented at the regional conference of the Midwest Chapter of the American College of Sports Medicine Program, St. Charles, IL.
66. Knutson, M., McGlynn, M., Venkatachalam, M., Zhang, G., Hamaker, B., Shubrook, J., & **Kushnick, M.** (2009, March). *The glycemic and insulinemic response to a standard meal 4-hours after ingestion of glucose and a novel extended release carbohydrate* [Abstract]. Paper presented at the annual meeting of the American College of Osteopathic Family Physicians, Washington, DC.
67. **Kushnick, M.** (2009, November). *Human studies involving slowly digesting starches*. Symposium conducted on Slowly Digesting Starch conducted at Whistler Center for Carbohydrate Research, Purdue University—USDA Extension, West Lafayette, IN.
68. **Kushnick, M.**, Knutson, M., Timothy, A., & McGlynn, M. (2009). *Postprandial lipemia and fitness status* [Abstract]. Paper presented at the regional conference of the Midwest Chapter of the American College of Sports Medicine Program, St. Charles, IL.
82. Lavendar, S. A., Johnson, M., **Thomas, J. S.**, & France, C. R. (2009). Are 3-dimensional spine moments indicative of fear of movement by asymptomatic individuals following a LBP episode? [paper 1811]. In *Transactions of the 55th Annual Meeting of the Orthopaedic Research Society*. Rosemount, IL: Orthopaedic Research Society.
69. List, E. O., Bower, B., **Berryman, D. E.**, & Kopchick, J. J. (2009). *A study comparing the use of growth hormone, metformin and IGF-1 for treating type 2 diabetes in mice*. Poster presented at the 91st annual meeting of the Endocrine Society, Washington, DC.
70. Loucks, A. B., Bowman, L., **Clevidence, M. W.**, **Dominguese, D. J.**, Grandy, J. S., & Hayes, R. M. (2009, May). *Plyometric exercise can overcome the impairment of bone turnover by low energy availability in young men*. Poster presented at the 91st annual meeting of the Endocrine Society, Washington, DC.
71. Magon, V., Palmer, A. J., List, E. O., Okada, S., Kopchick, J. J., & **Berryman, D. E.** (2009). *Body composition and adipokine levels in growth hormone antagonist mice*. Poster presented at the 91st annual meeting of the Endocrine Society, Washington, DC.

72. Martos-Moreno, G. A., Sackmann-Sala, L., **Berryman, D. E.**, Blome, D. W., & Kopchick, J. J. (2009). *Proteomic analysis of human subcutaneous adipose tissue in distinct anatomical locations*. Poster presented at the 91st annual meeting of the Endocrine Society, Washington, DC.
73. **McCarthy, J.** (2009, March). *Visual scenes in AAC: What, why, when, and how*. Paper presented at the annual meeting of the Ohio State Speech-Language-Hearing Association, Columbus, OH.
74. McCullough, G., & **Kim, Y.** (2009). *Effects of Mendelsohn maneuver on swallow physiology poststroke*. Paper presented at the annual conference of the Dysphagia Research Society, New Orleans, LA.
75. Meadows, A., Aston, M., Beight, C., & **Sindelar, B.** (2009, February). *Upper quadrant range of motion in patients with headaches* [Abstract #2225]. Paper presented to the Combined Sections Meeting of the American Physical Therapy Association (APTA), Las Vegas, NV.
76. Miles, D. B., List, E. O., Okada, S., Kopchick, J. J., & **Berryman, D. E.** (2009). *Depot-related differences in receptors in C57Bl/6J mice*. Poster presented at the 91st annual meeting of the Endocrine Society, Washington, DC.
77. Montgomery, K., **Krause, A., Starkey, C., & Ryan, T.** (2009, May 16). *Assessment of athletic training room surfaces for MRSA communicable pathogens*. Poster presented at the meeting of the Ohio Athletic Trainers Association. King's Island, OH.
78. Myers, A., & **Brannan, R. G.** (2009). *Egg white solutions used as a pre-treatment before frying inhibits lipid absorption in fried chicken patties*. Paper presented at the meeting of the annual meeting of the Institute of Food Technologists, Anaheim, CA.
79. Myers, A. S., Schott, M., & **Brannan, R. G.** (2009). *Efficacy of protein solutions as lipid absorption barriers during frying of fried chicken patties*. Paper presented at the meeting of the 7th Euro Fed Lipid Congress, Graz, Austria.
80. Oh, S.-H., Kim B.J., Chang, S.-A., & Xu, L. (2009). Relative effects of spectral and temporal cues for Korean phoneme recognition [Abstract #950]. *2009 Abstracts of the Association for Research in Otolaryngology (ARO) MidWinter Meeting*, 32, 157. Available from the Search ARO Abstracts Web site, <http://www.aro.org/abstracts/abstracts.html>
81. Park, J., Oh, J., & **Kim, Y.** (2009). *Effortful swallow combined with electrical stimulation in poststroke dysphagic patients*. Poster presented at the annual conference of the Dysphagia Research Society, New Orleans, LA.
83. **Paschold, H.** (2009, July 1). *Whole-body vibration*. Paper presented at the professional development conference and exposition of the American Society of Safety Engineers National, San Antonio, TX.

84. **Paschold, H.** (2009, June 2). *Whole-body vibration occupational exposure assessment for US workers*. Paper presented at the 4th International Conference on Whole Body Vibration Injuries, Montreal, CAN.
82. Rabideau, E., de Groot, M., Doyle, T., Merrill, J., Shubrook, J., **Kushnick, M.**, & Schwartz, F. (2009, June). *Participant satisfaction with Program ACTIVE: A depression treatment study for adults with type 2 diabetes*. Paper presented at the Ohio University Research and Creative Activity Exposition, Athens, OH.
83. Ruggeri, R., Gustwiller, S., **Russ, D.**, & **Thomas, J. S.** (2009). *Characterization of central activation and contractile properties of lumbar extensor muscles* [Abstract]. Paper presented at the Combined Sections Meeting of the American Physical Therapy Association (APTA), Las Vegas NV.
85. Ruggeri, R. G., **Russ, D. W.**, Gustwiller, S. M., & **Thomas, J.** (2009). Characterization of central activation and contractile properties of the lumbar extensor muscles [Abstract]. *Clinical Electrophysiology & Wound Management*, 23(1), 10.
84. Sackmann-Sala, L., **Berryman, D. E.**, Kopchick, J. J. (2009). *Depot-specific proteomic analysis of mouse adipose tissue*. Poster presented at the 91st annual meeting of the Endocrine Society, Washington, DC.
85. Sackmann-Sala, L., **Berryman, D. E.**, Kopchick, J. J. (2009). *Differences in adipose tissue protein profiles from GHR-/- and wild type mice*. Poster presented at the 91st annual meeting of the Endocrine Society, Washington, DC.
86. Salabak, D. E., **Brannan, R. G.** (2009). *Characterization of lipid, moisture, and antioxidant capacity of pawpaw pulp*. Paper presented at the annual meeting of the Institute of Food Technologists, Anaheim, CA.
87. Sano, Y., **Manoogian, M. M.**, & Ontai, L. (2009, November). *Creating stability in fragile partnerships in rural low-income families*. Paper presented at the annual meeting of National Council on Family Relations, San Francisco, CA.
88. Schnabel, E. A., & **Jeng, F.-C.** (2009, March 5-7). *Pitch-contour following responses in infants* [Abstract, p. 49, #28]. Paper presented at the 63rd annual convention of the Ohio Speech-Language-Hearing Association, Columbus, OH.
89. Smith, S. & **Manoogian, M. M.** (2009, November). *Daughter and mother perspectives on education and success in low-income African American families*. Poster presented at annual meeting of National Council on Family Relations, San Francisco, CA.
90. Steitz, K., & **Holben, D. H.** (2009, April 2). *Bright Ideas* [Invited]. Outstanding Dietetic Educators Share. Paper presented at the regional meeting of the Dietetic Educators of Practitioners, Indianapolis, IN.
91. **Russ, D. W.**, Hans, M. A., Clark, B. C., Gau, J. T. (2009, October). Age-related declines in parathyroid hormone receptor expression mammalian skeletal muscle [Abstract]. *The Gerontologist*, 49(Suppl 2), 141.

92. **Russ, D. W.**, Horner, A., Biknevičius, A. R., & Ward, C. W. (2009, May). Hindlimb muscle quality and ambulation in old rats [Abstract]. *Medicine & Science in Sports & Exercise*, 41(5), 483.
93. **Sallar, A. M.** (2009, November 7-11). *HIV prevention in Ghana: The need to include MSM as a subpopulation*. Poster presented at the 137th annual meeting of the American Public Health Association, Philadelphia, PA
94. **Sallar, A. M.** (2009, November 7-11). *Water water everywhere yet no drop to drink*. Poster presented at the 137th annual meeting of the American Public Health Association, Philadelphia, PA.
95. **Scott, S. A.**, Williams, S. N., Saini, J. K., Hoffman, B., & Kawaja, M. D. (2009). NGF overexpression in the transgenic murine superior cervical and superior mesenteric ganglia: A stereological analysis [Abstract]. *Society for Neuroscience Abstracts*. Available from http://www.sfn.org/index.aspx?pagename=abstracts_am2009
96. **Sergeev, A. V.**, & Carpenter, D. O. (2009). Myocardial infarction in populations exposed to organic compounds: Understanding Black-White and gender disparities, 1993-2004 [Abstract from the 2009 Joint Conference—Nutrition, Physical Activity and Metabolism and 49th Cardiovascular Disease Epidemiology and Prevention]. *Circulation*, 119(10), E364.
97. **Sergeev, A. V.**, & Carpenter, D. O. (2009, May 11-13). *Exposure to persistent organic pollutants further increases risk of ischemic stroke in the diabetes population: An environment-related public health problem*. Paper presented at the Ohio Public Health Conference, Columbus, OH.
98. Shelton, S. B., **Scott, S. A.**, & Crutcher, K. A. (2009). Absence of genotypic effects on functional recovery or neuropathology within human APOE-targeted-replacement mice [Abstract]. *Society for Neuroscience Abstracts*. Available from http://www.sfn.org/index.aspx?pagename=abstracts_am2009
99. Shelton, S. B., **Scott, S. A.**, Crutcher, K. A. (2009, March 11-15). *Lack of genotypic differences in brain pathology in human APOE-targeted-replacement mice*. Poster presented at the 9th International Alzheimer's Disease and Parkinson's Disease Conference, Prague, Czech Republic.
100. **Starkey, C.** (2009, January 29). *'Playing House': Clinical decision-making in athletic training*. Paper presented at the meeting of the Southwest Athletic Trainers' Association, San Antonio, TX.
101. **Starkey, C.** (2009, March 31). *Research: It's not just for geeks anymore...* [William E. Newell Keynote Address]. Keynote address presented at the meeting of the Great Lakes Athletic Trainers' Association, Fort Wayne, IN.
102. **Starkey C.** (2009, May 15). *Speaking a common language*. Paper presented at the meeting of the Ohio Athletic Trainers' Association, King's Island, OH.

103. **Starkey, C.** (2009, June 18). *Survivor-athletic training educator: Keys to success*. Paper presented at the annual business meeting and symposium of the National Athletic Trainers' Association, San Antonio, TX.
104. **Stretton, D.** (2009). *A multi-faceted approach to identification, recruitment and retention of health administrators*. Paper presented at the annual meeting of the American Public Health Association, Philadelphia, PA.
105. **Stretton, D.** (2009). *Information technology and physician's practice*. Paper presented at the annual meeting of the American Public Health Association, Philadelphia, PA.
106. **Stretton, D.** (2009). *Colleges of osteopathic medicine and ever changing reimbursement environment*. Paper presented at the annual meeting of the American Association of Colleges of Osteopathic Medicine, Washington, DC.
107. Taylor, C. A., **Holben, D. H.**, Shirk, B., & Wang, Y. (2009). Rates of obesity and central adiposity in US adolescents by school breakfast and lunch program participation [Abstract]. *Journal of the American Dietetic Association*, 109, A98.
108. Teeters, M. L., **Berryman, D. E.**, **Holben, D. H.**, & **Brannan, R. G.** (2009). *Obesity and health risk factors for employees at a major university in rural Appalachian Ohio*. Poster presented at the annual meeting of American Society of Nutrition, Experimental Biology Section, New Orleans, LA.
109. Teeters, M. L., **Berryman, D. E.**, **Holben, D. H.**, & **Brannan, G.** (2009). Obesity and health risk factors for employees at a major university in rural Appalachian Ohio [Abstract]. *Federation of American Societies for Experimental Biology Journal*, 23, 735.7.
110. **Thomas, J. S.** (2009, February 11). *Fear avoidance behavior: A state-of-the-art review*. Paper presented at the Combined Sections Meeting of the American Physical Therapy Association (APTA), Las Vegas NV.
111. **Thomas, J. S.**, Gustwiller, S., Johnson, E., Klewer, M., McCallum, A., & Ruggeri, R. (2009). *The influence of chronic low back pain on trunk muscle onset latencies in full body reading tasks* [Abstract]. Paper presented at the Combined Sections Meeting of the American Physical Therapy Association (APTA), Las Vegas NV.
112. Varadhan, R., Horska, A., **Russ, D.**, Weiss, C., Walston, J. D., & Fried, L. P. (2009, October). Dynamics of phosphocreatine recovery in the skeletal muscle of frail older women [Abstract]. *The Gerontologist*, 49(Suppl 2), 292.
113. Vardell, M., **Holben, D. H.**, & Holcomb, J. P. (2009). Farm at the pantry: A produce intervention program implemented to improve the produce access, intake, and health of low-income, Appalachian families in the region participating in food pantries [Abstract]. *Federation of American Societies for Experimental Biology Journal*, 23, 736.17.
114. Wright, K., Harter, L. **Denham, S. A.**, & **Manoogian, M.** (2009, November 12). *Communicating diabetes: A roundtable discussion of the social construction of a disease*. Roundtable panel discussion at the 95th convention of the National Communication Association, Chicago, IL.

115. **Xu, L.** (2009, January 8). *Lexical tone production and singing proficiency in prelingually deaf children with cochlear implants*. Paper presented at the Department of Otolaryngology–Head & Neck Surgery, Indiana University School of Medicine.
116. **Xu, L.** (2009, September 16). *Temporal aspects of sine-wave speech recognition*. Paper presented at the Kresge Hearing Research Institute, University of Michigan, Ann Arbor.
117. **Xu, L.** (2009, September 27). *Temporal aspects of sine-wave speech recognition*. Paper presented at the Department of Otolaryngology, Beijing Tongren Hospital, Capital University of Medical Sciences, Beijing.
118. **Xu, L., Han, D., Liu, B.** (2009). *The lexical tone perception with HiResolution® and HiResolution® 120 sound-processing strategies in Mandarin-speaking children*. Paper presented at the 2nd World Chinese Otorhinolaryngology-Head & Neck Conference, Macau, China.
119. **Xu, L., Zhou, N., Huang, J., Chen, X., Li, Y., Zhao, X., & Han, D.** (2009). *Lexical tone development in prelingually-deafened children with cochlear implants*. Paper presented at the Conference on Implantable Auditory Prostheses, Tahoe City, CA.
120. **Xu, L., Zhou, N., Huang, J., Chen, X., Li, Y., Zhao, X., & Han, D.** (2009). *Lexical tone development in prelingually-deafened children with cochlear implants*. Paper presented at the 12th International Symposium on Cochlear Implants in Children, Seattle, WA.
121. **Xu, L., Zhou, N., Rife, K., & Brashears, R.** (2009). Relative contributions of spectral and temporal cues for speech recognition in patients with sensorineural hearing loss [Abstract]. *Journal of the Acoustical Society of America*, 125(4), 2632-2633.
122. Zhai, Y. F., Bower, B., List, E. O., Kopchick, J. J., & **Berryman, D. E.** (2009). *Optimizing protein levels in ketogenic diets to induce weight loss in obese C57BL/6J mice*. Poster presented at the 91st annual meeting of the Endocrine Society, Washington, DC.
123. Zhou, N., & **Xu, L.** (2009). *Vocal singing by prelingually-deafened children with cochlear implants*. Paper presented at the annual meeting of the American Auditory Society, Scottsdale, AZ.
124. Zhou, N., **Xu, L., & Lee, C.-Y.** (2009). Effects of basal spectral shift on consonant confusion: Implications for cochlear implants [Abstract]. *2009 Abstracts of the Association for Research in Otolaryngology (ARO) MidWinter Meeting*, 32, 242. Available from the Search ARO Abstracts Web site, <http://www.aro.org/abstracts/abstracts.html>
125. Zhou, N., Wang, W., & **Xu, L.** (2009). *Musical and lexical pitch perception by cochlear implant recipients*. Paper presented at the Conference on Implantable Auditory Prostheses, Tahoe City, CA.
126. Zhou, N., Xu, L., & **Lee, C.-Y.** (2009, February). *Effects of basal spectral shift on consonant confusion: Implications for cochlear implants*. Paper presented at the 32nd mid-winter meeting of the Association for Research in Otolaryngology, Baltimore, MD.

127. Zurmehly, A. B., **Holben, D. H.**, Jackson, L., & Holcomb, J. P. (2009). Use of a gardening and nutrition education program to improve the produce intake of school age children living in Appalachian Ohio [Abstract]. *Federation of American Societies for Experimental Biology Journal*, 23, 736.16.
-

© September 2010 College of Health Sciences and Professions
Ohio University
Grover Center W379
Athens, OH 45701

Inquiries or Corrections
J. Horner, Associate Dean
hornerj@ohio.edu