



students faculty/staff alumni parents

you@Ohio  
Entrance Info &  
Apply Online

Search

Google

Ohio.edu Sites  
Name Directory

Find

academics research offices athletics the arts map & tour

# OUTLOOK

Ohio University  
News & Information

Thursday, July 9, 2009

## Landscapes of the mind, earth

### Kennedy exhibit challenges conventional definition

Jul 7, 2009

The Kennedy Museum of Art is drawing upon its permanent collections to create a new exhibition that explores the many possible interpretations of landscape.

In "Scapes: From Landscape to Innerscape," visitors will experience traditional and abstracted landscapes as well as artwork that hints at the inner landscape of a body or mind in a state of a dream and fantasy. The exhibition will challenge established concepts behind traditional and romantic ideas of landscapes, reconsidering such concepts as gravity and weightlessness so that the viewer plunges into an imaginary world or "innerscape." The exhibition will run through Sunday, Sept. 6.

The exhibition explores both the mystery and beauty of the inner landscape or introspection as well as highlighting concrete images of traditional city and landscapes. Cityscapes, landscapes, abstracted 'scapes and innerscapes are represented in a variety of mediums including acrylic on canvas, intaglio, photo lithograph, oil on linen and woodcut, to name a few.

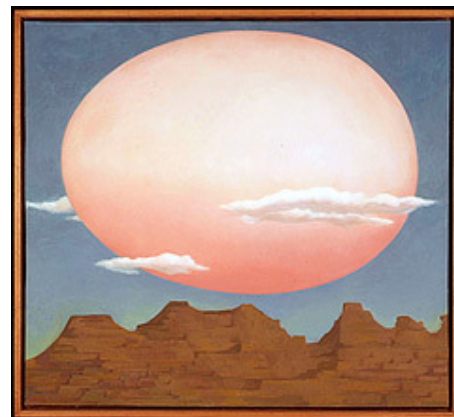
The exhibition includes, but is not limited to, works by Sue Wall, Ross Johnson, Louise Nevelson, Gertrude Greene, Aaron Bohrod and Clarence White. All art displayed in the exhibition belongs to the Kennedy Museum of Art's permanent collections.

Museum hours are Tuesday, Wednesday and Friday from noon to 5 p.m., Thursday from noon to 8 p.m. and Saturday and Sunday from 1 to 5 p.m. The museum is closed on Mondays and holidays. Parking and admission are free. Please call 740-593-1304 or visit [www.ohio.edu/museum](http://www.ohio.edu/museum) for more information.

#### Related Links

Kennedy Museum of Art: <http://www.ohio.edu/museum/>

Published: Jul 7, 2009 8:44 AM



Sue Wall, *Untitled*, c. 1974, acrylic on canvas  
Kennedy Museum of Art Collection

#### Share this story

SHARE

Email To:

Email From:

Send

#### Top stories

Jul 9, 2009

**Werner joins USA Swimming World Championships staff**  
[[ohiobobcats.com](http://ohiobobcats.com)]

**All eyes on OHIO student tonight**

*Jul 8, 2009*

**Coming home**

*Jul 7, 2009*

**University mourns student's death**

*Jul 6, 2009*

**Budget issues discussed on radio show**

*Jul 2, 2009*

**OHIO's links with America's founding fathers [video]**

[Outlook archives](#)



**Outlook welcomes your feedback, news items and story ideas**

[Share comments about the site](#)

[Submit an announcement](#)

[Share a faculty, staff or departmental achievement](#)

[Subscribe to the Outlook listserv](#)

Tel: 740-593-1890 Fax: 740-593-1887 E-mail: [news@ohio.edu](mailto:news@ohio.edu)

Copyright © 2009 [Ohio University](#)

All Rights Reserved