

OU μ CT long term file storage tutorial

Ryan Ridgely and Larry Witmer

Dept. Biomedical Sciences

Version 2.0. August 2007

OU μ CT Work Flow

Object



CT Scanning

Acquisition files (raw data)



Correction phase

Corrected files



Reconstruction
phase

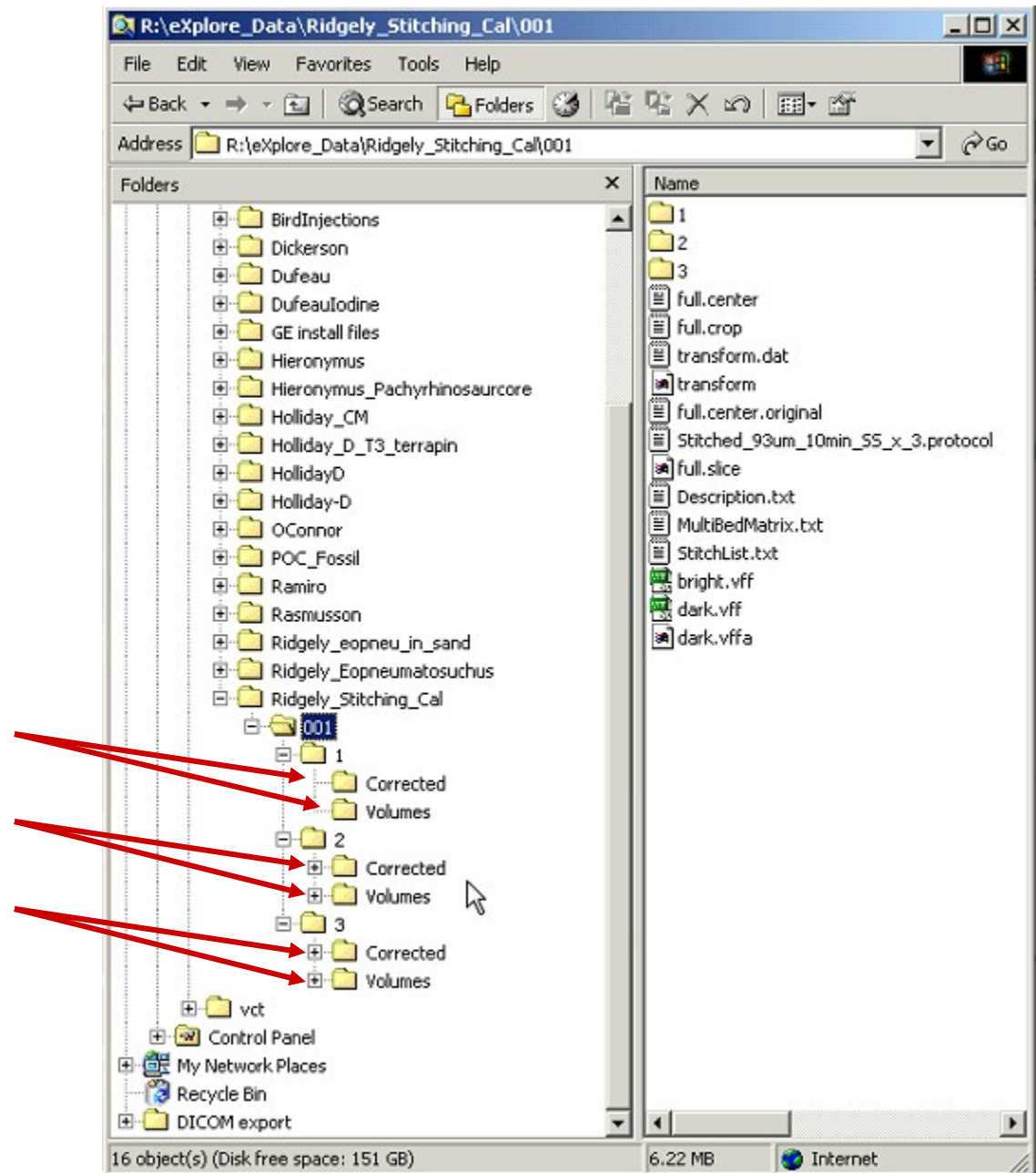
Volumes

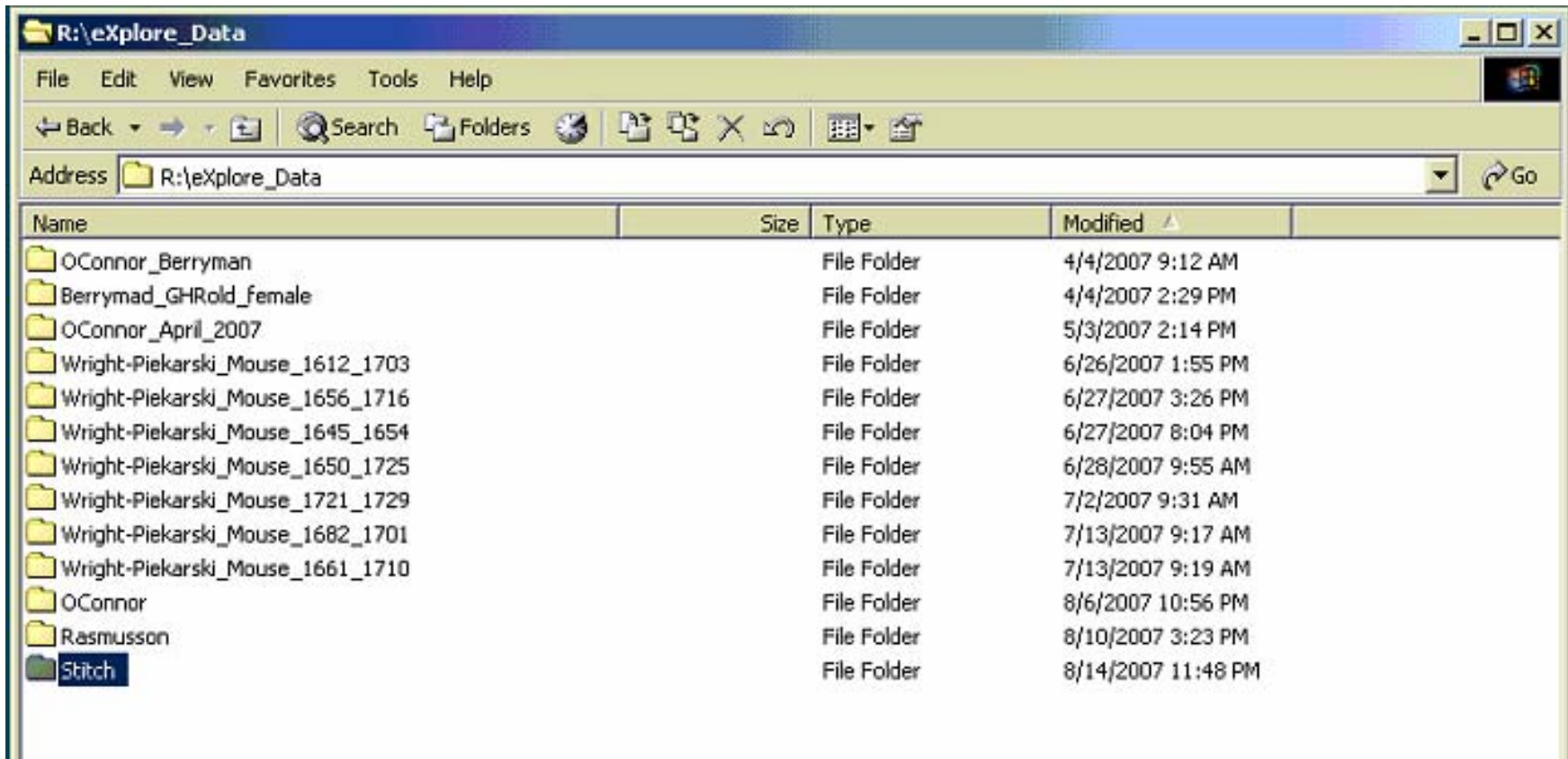
You can delete
these and
regenerate them
later... if you ever
need to!



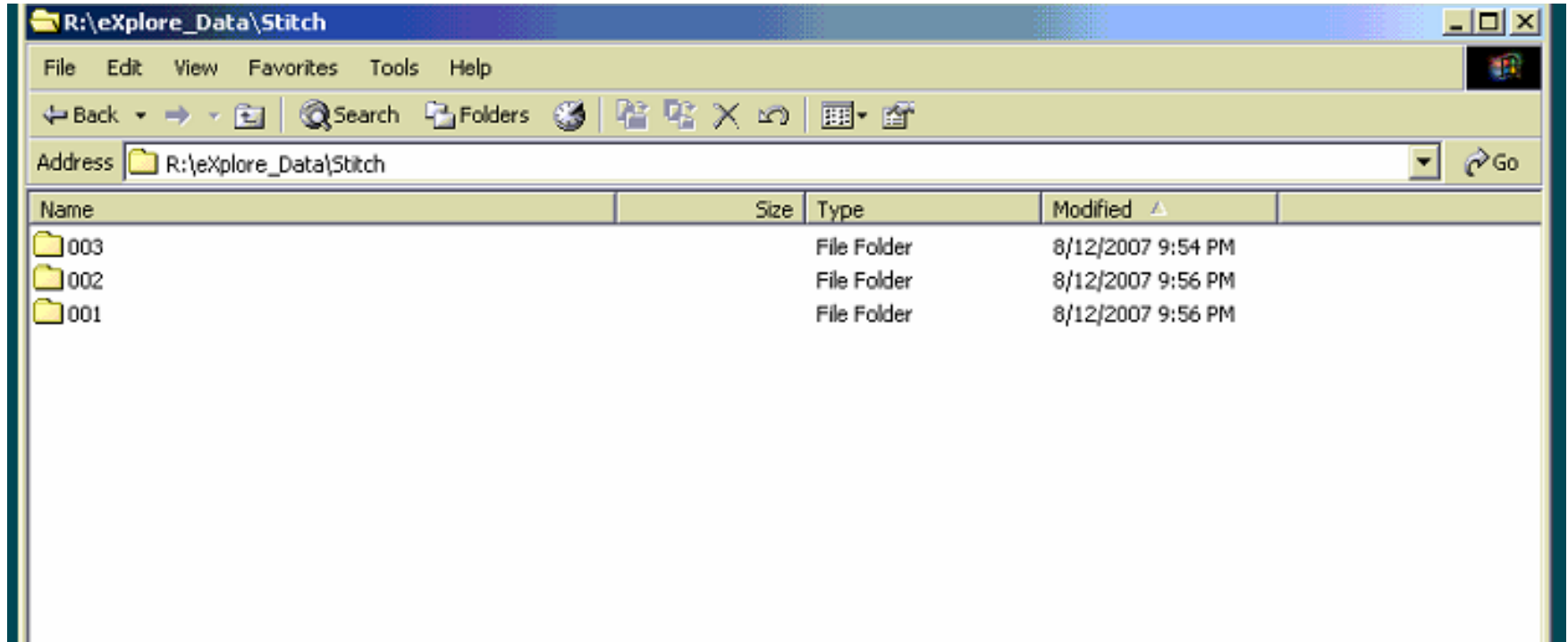
Once you're done with a dataset and have the volumes you need generated and saved (as a folder of DICOM files or a VFF file), you can cut down the size of your data for long term storage by more than 50%

In explorer, simply delete the "Corrected" folders and the individual volumes in the volume folders. If stitching, there will be one set of folders for each "stitch". A quick and dirty technique follows....

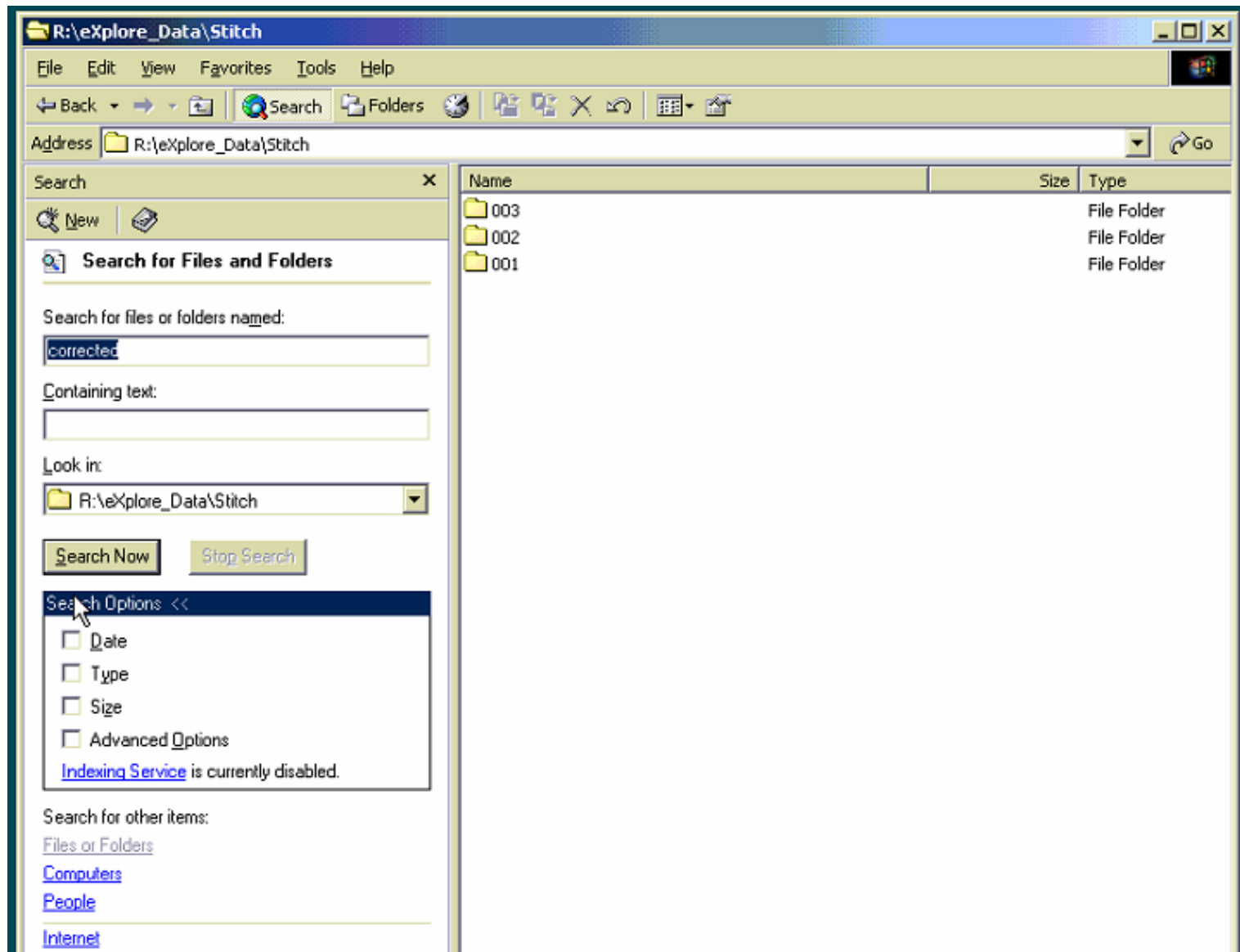




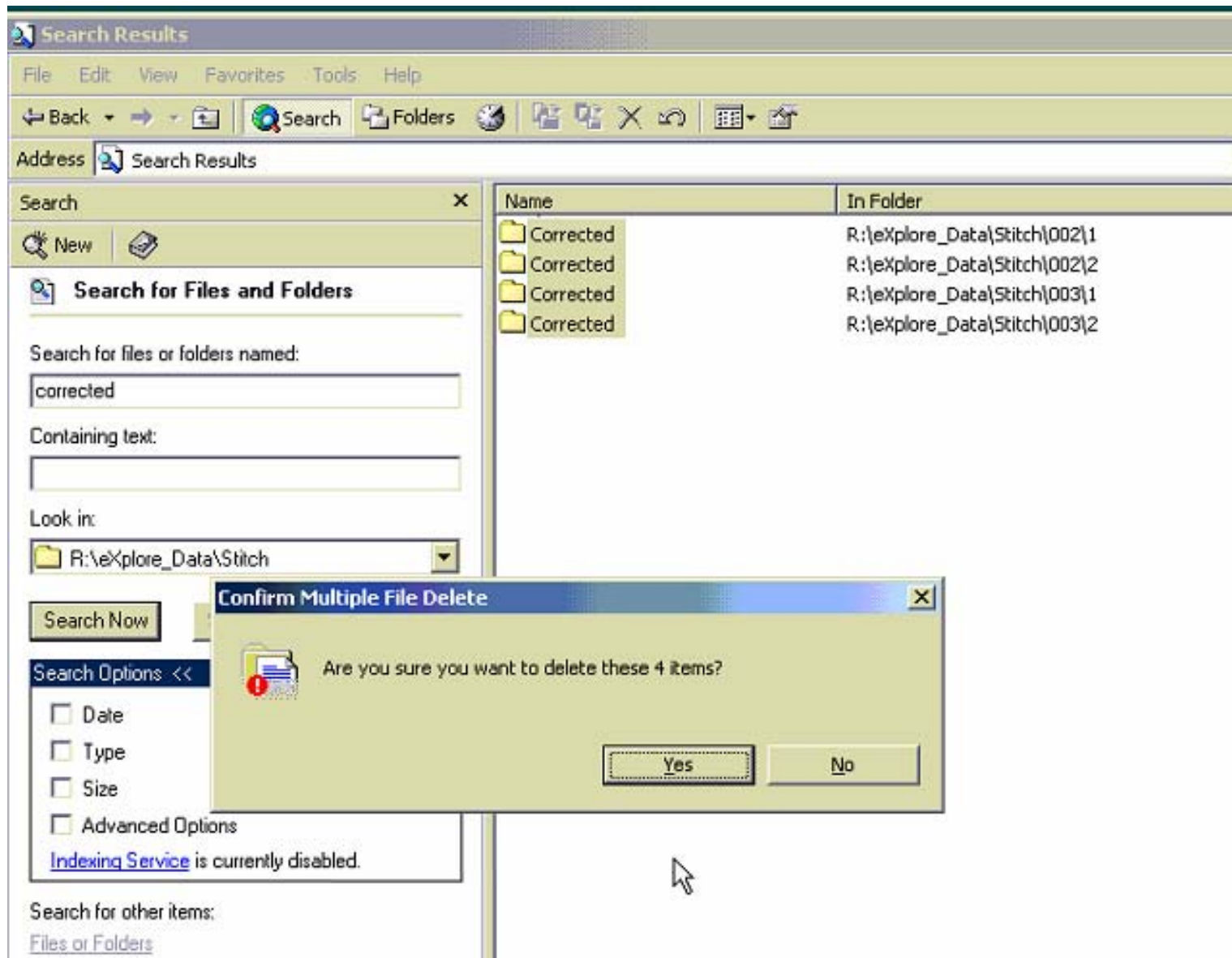
First navigate to the directory that you are looking to condense. Today we're cleaning up what the GE service technician left behind after giving the scanner its yearly physical.



Inside the “Stitch” folder, we see the individual scans. Hit “Control-F”, which brings up Windows’ find/search function.

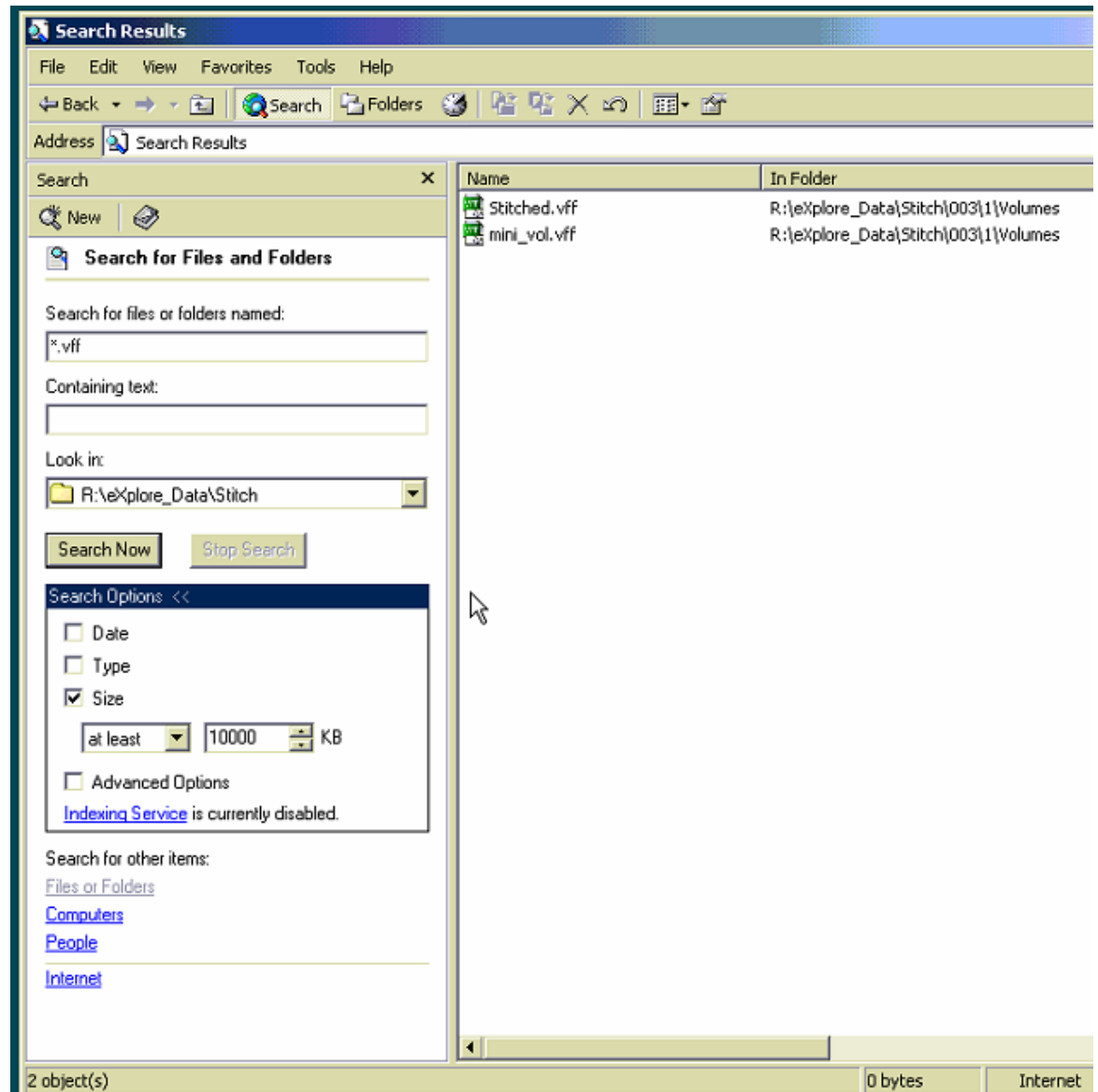


In the search directory, type in "corrected". This will find all of the corrected data.



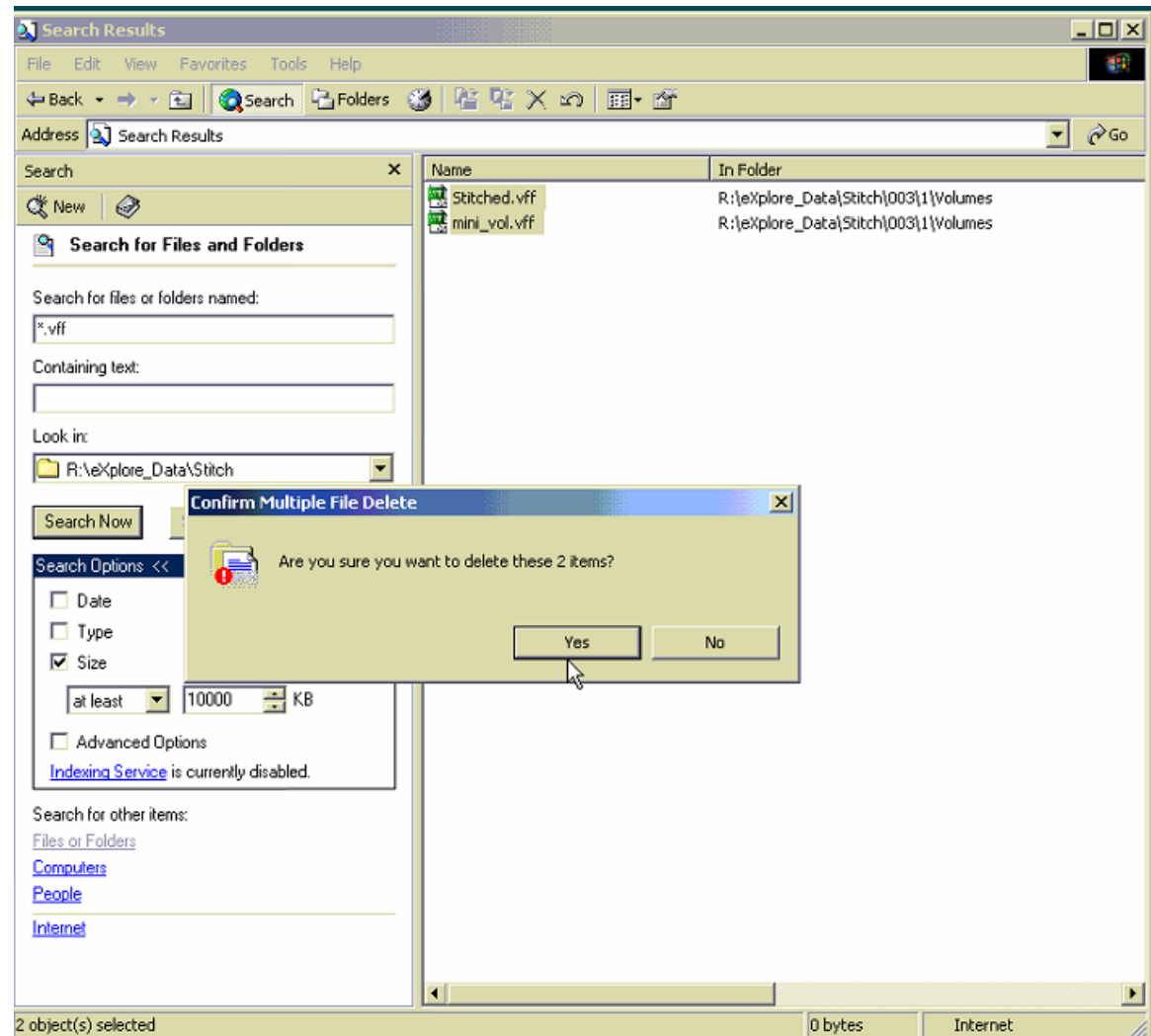
Once it's done searching, simply delete all of the corrected folders

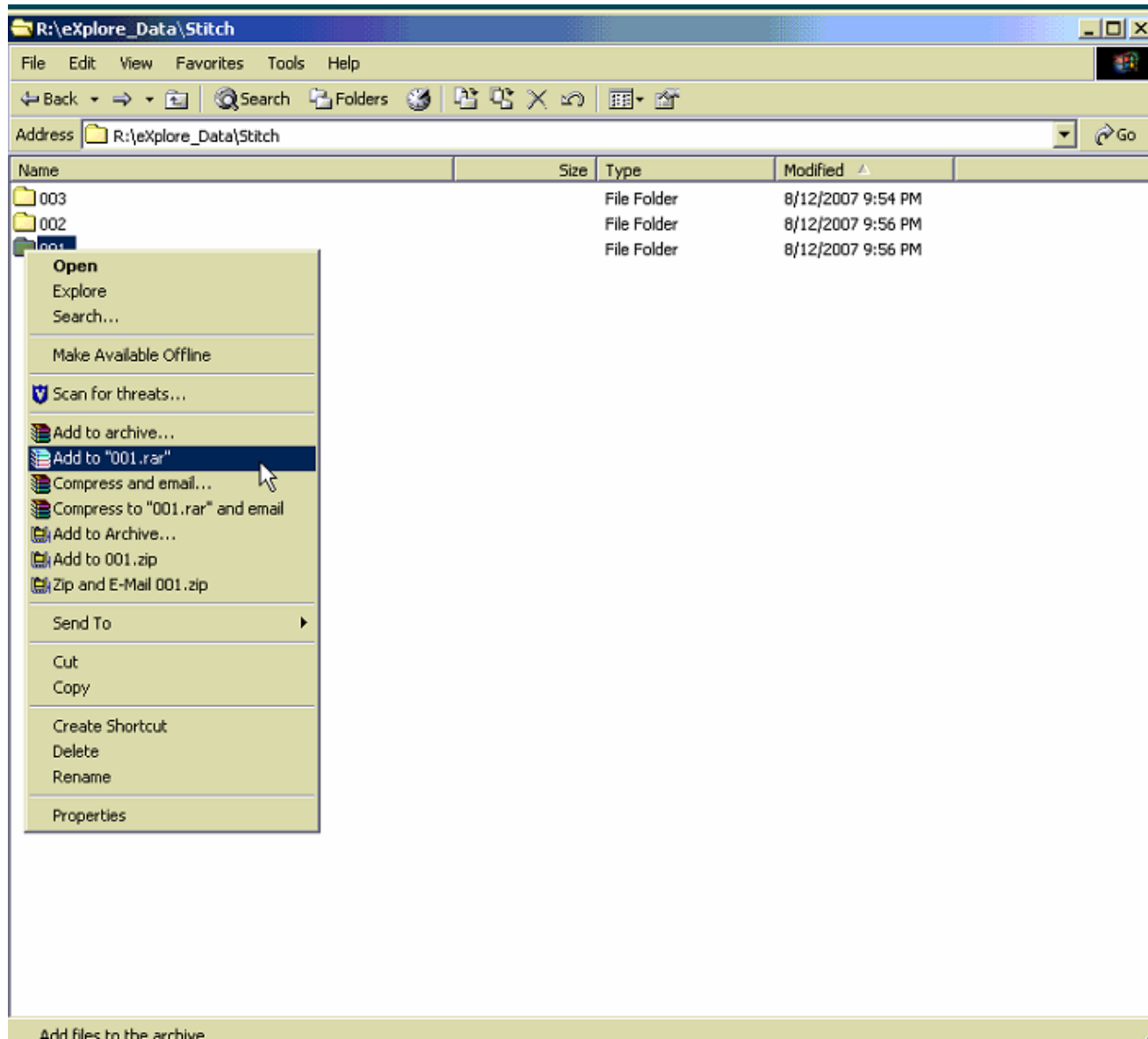
Next step is to find all of the reconstructed volumes. Almost all of the CT related files have the same “*.vff” extension, so it’s a little harder to weed out the volumes. Fortunately, volumes are bigger than anything else. Under “search options”, check “size”, and then find files “at least” 10MB (10,000KB). Most of these will have names like “stitched”, and “mini_vol”.



Delete these!

The next steps are optional. They are for compressing the thousands of remaining files into a handful of bigger files which are smaller in size overall, easier to manage, and faster to move off of the cluster. The winRAR program on the cluster computer is setup to make DVD sized files, and to test the resulting archives.



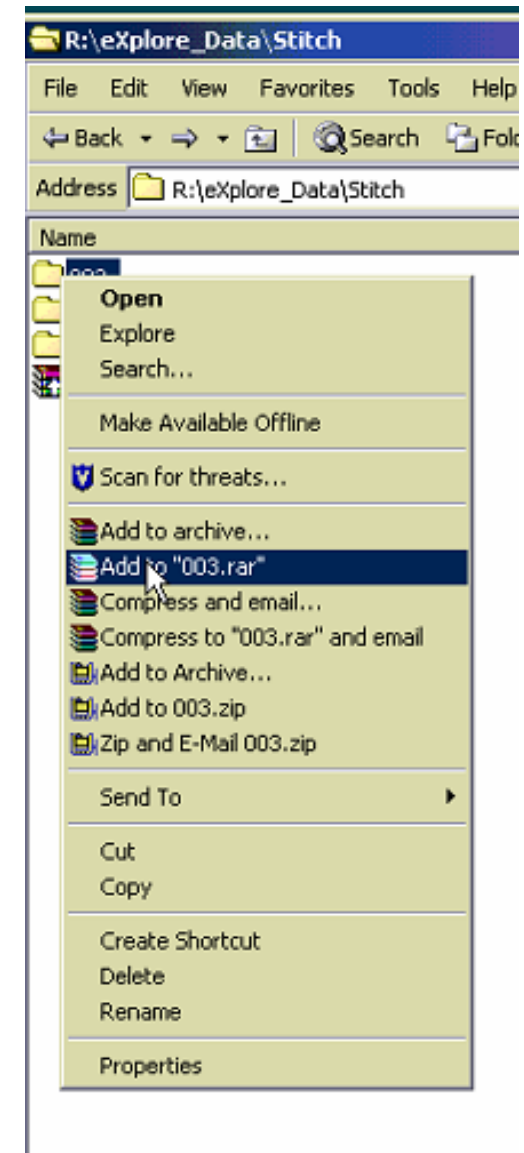
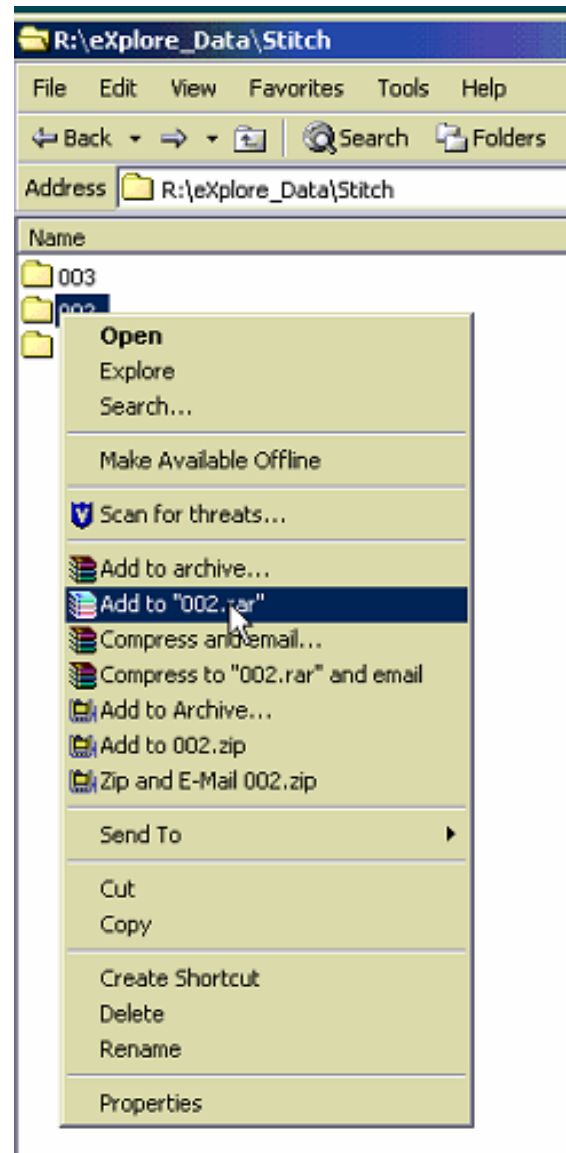


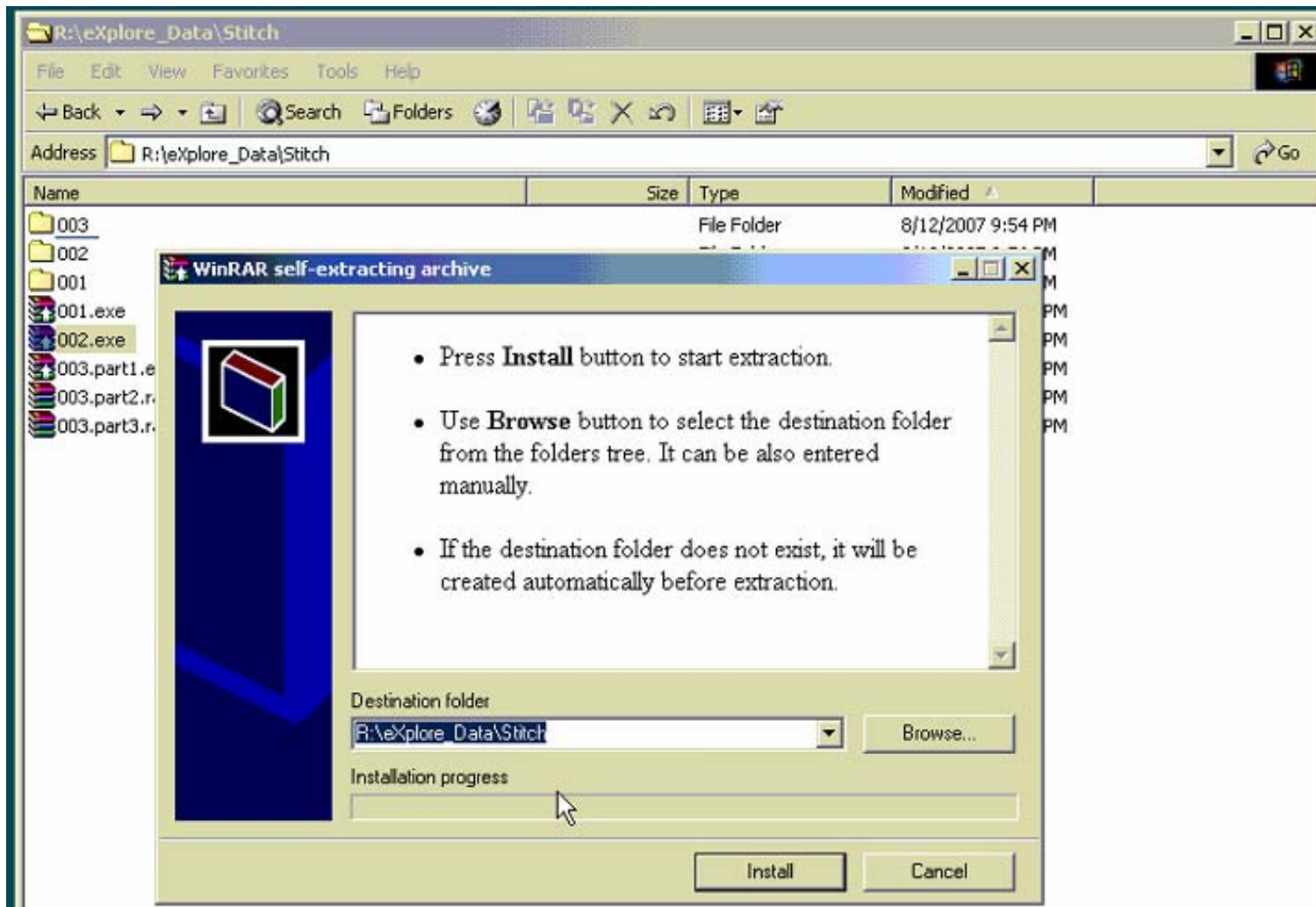
Close the search panel with the little "x". Then right click on the "001" folder, and "add to '001.rar'".

Do the same with all of the other numbered folders.

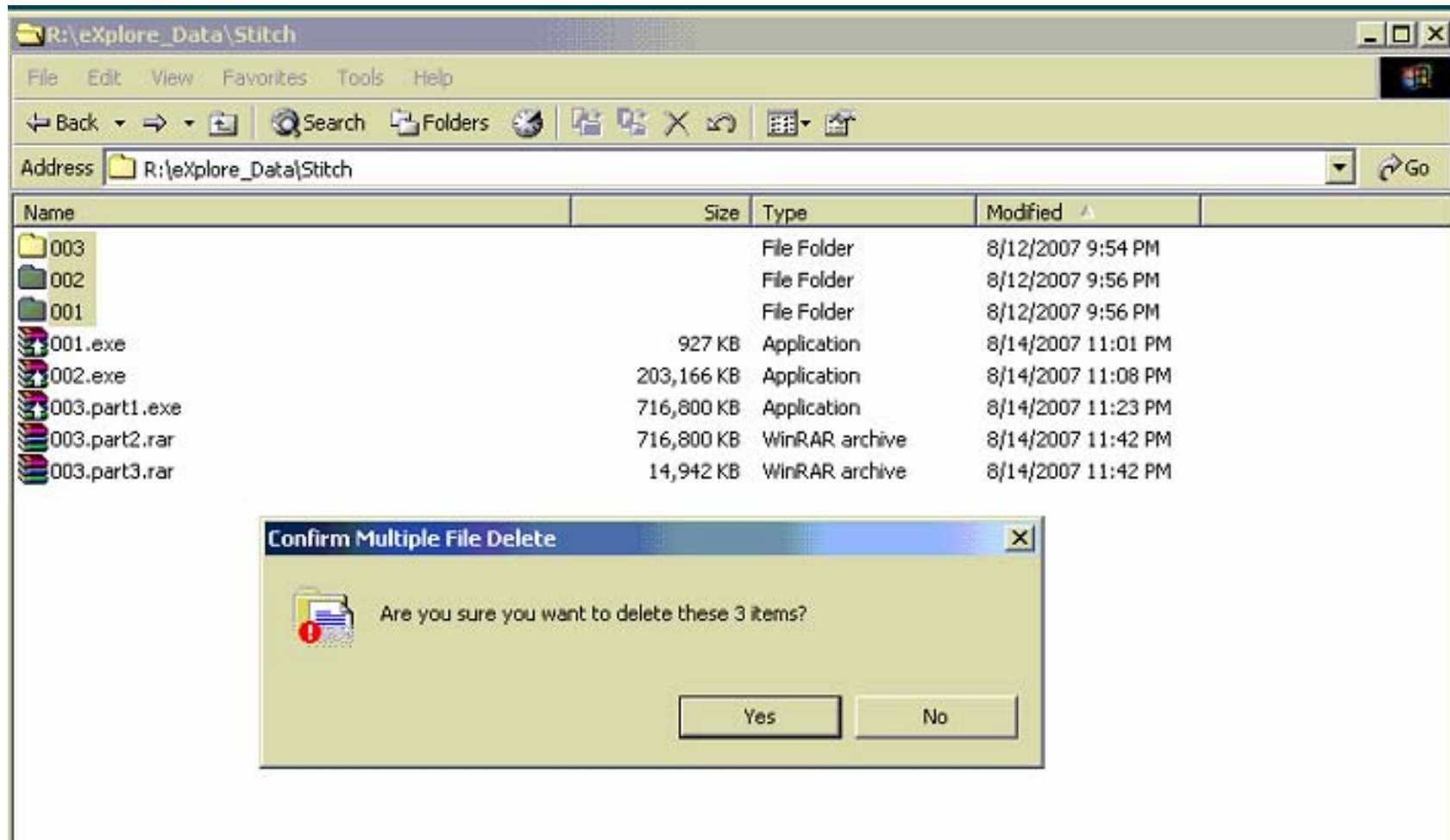
It takes a good, long time to archive everything. You won't run into errors if you do three or four directories at a time.

This is a good time to grab lunch and get some errands done...

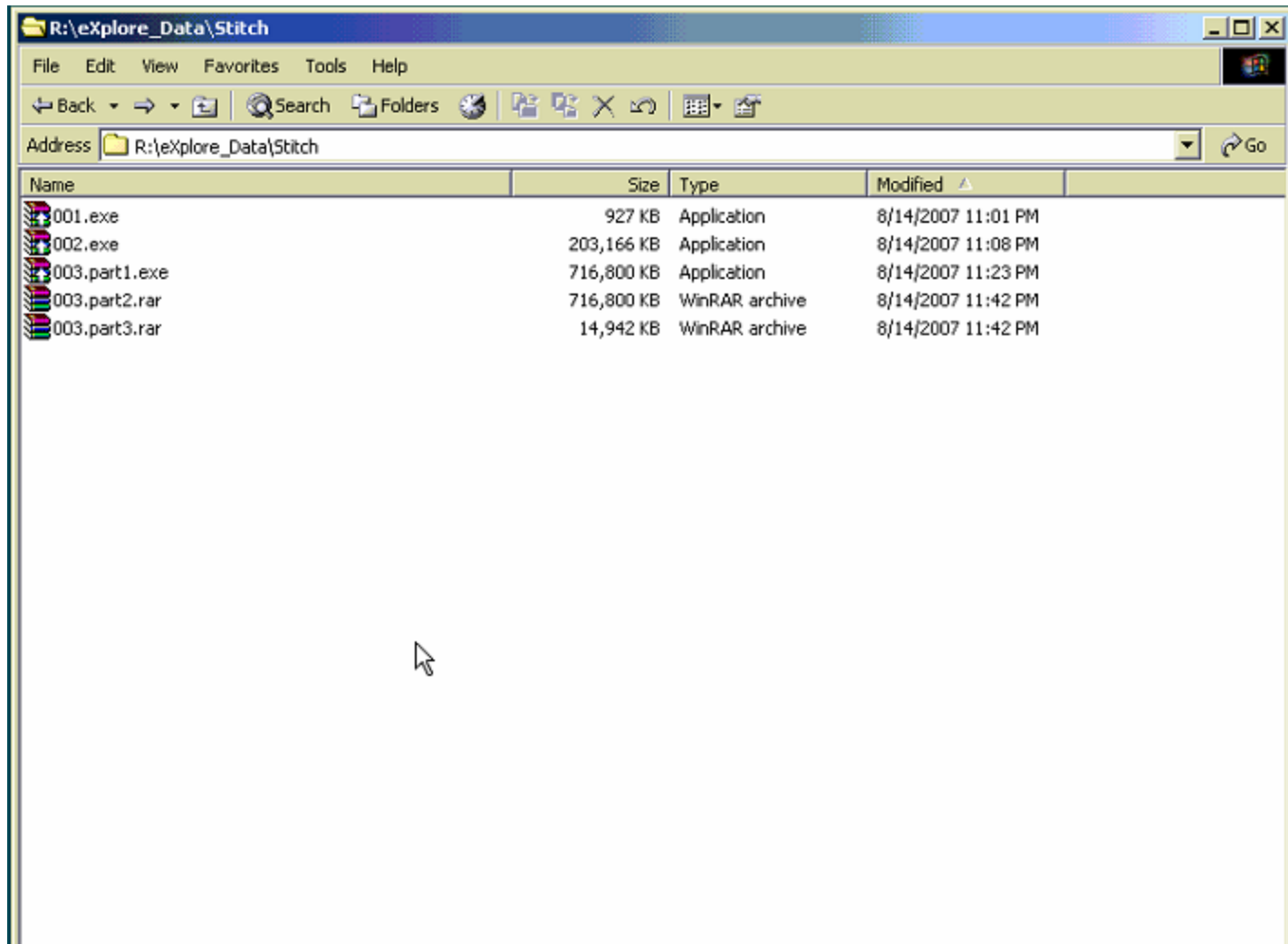




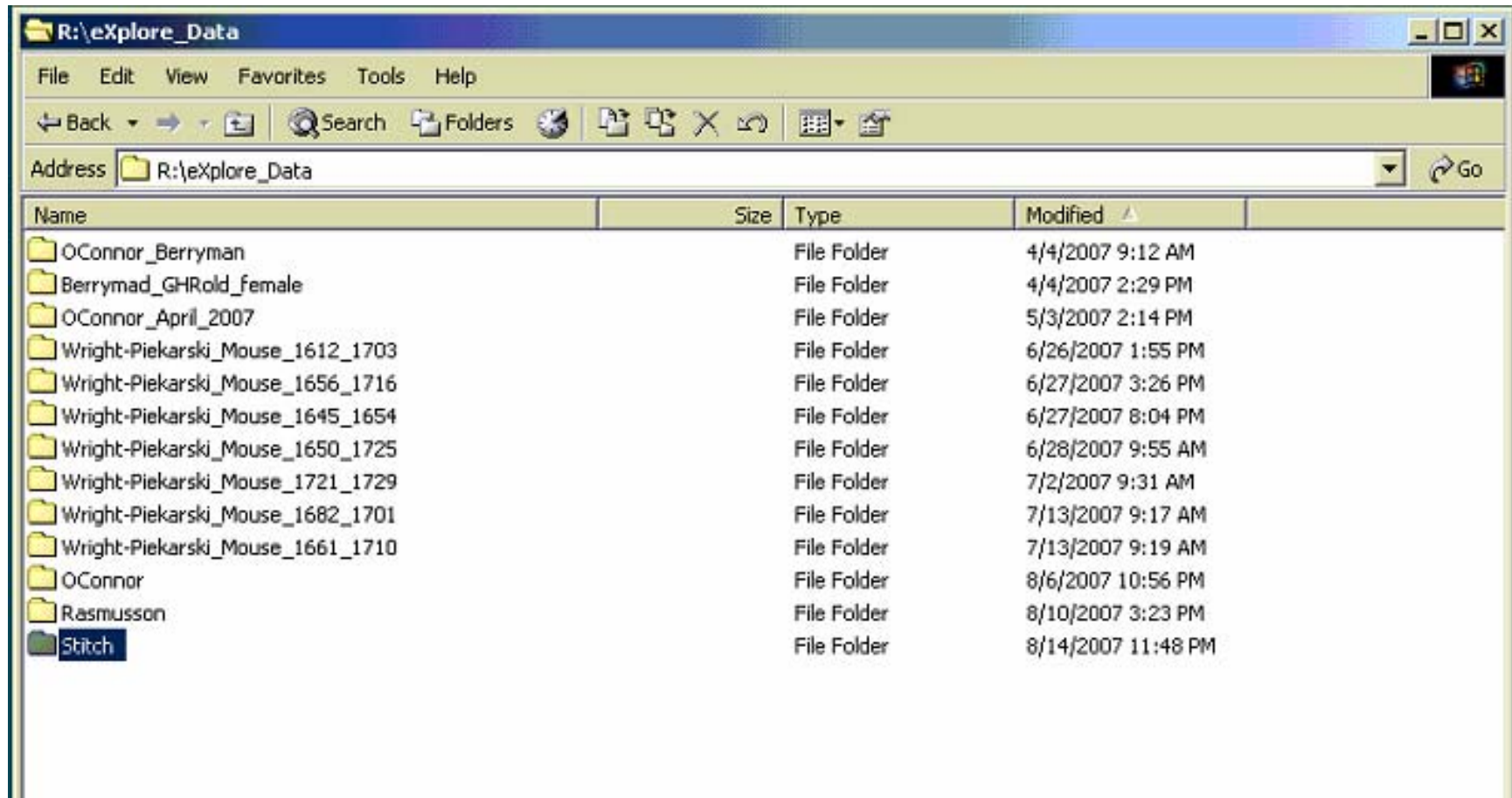
Once all of the archive files are created, a final test is to open each “.exe” files by double clicking on them to see if they open. If you see a window like this, you’re all set. Just click cancel, and check the other files.



If all of your EXE files check out OK, you can take a deep breath and delete the numbered folders



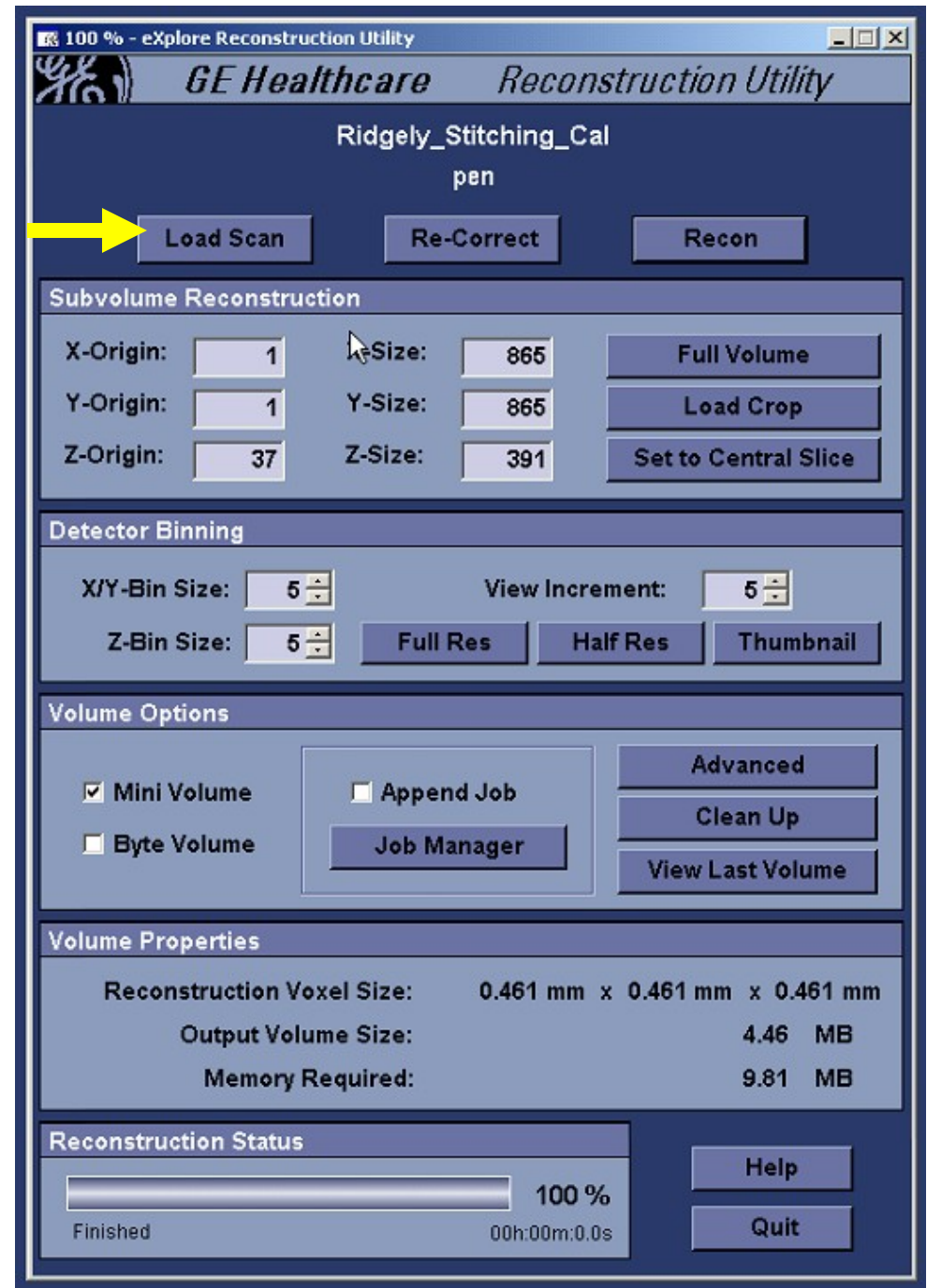
The final product looks like this, and.....



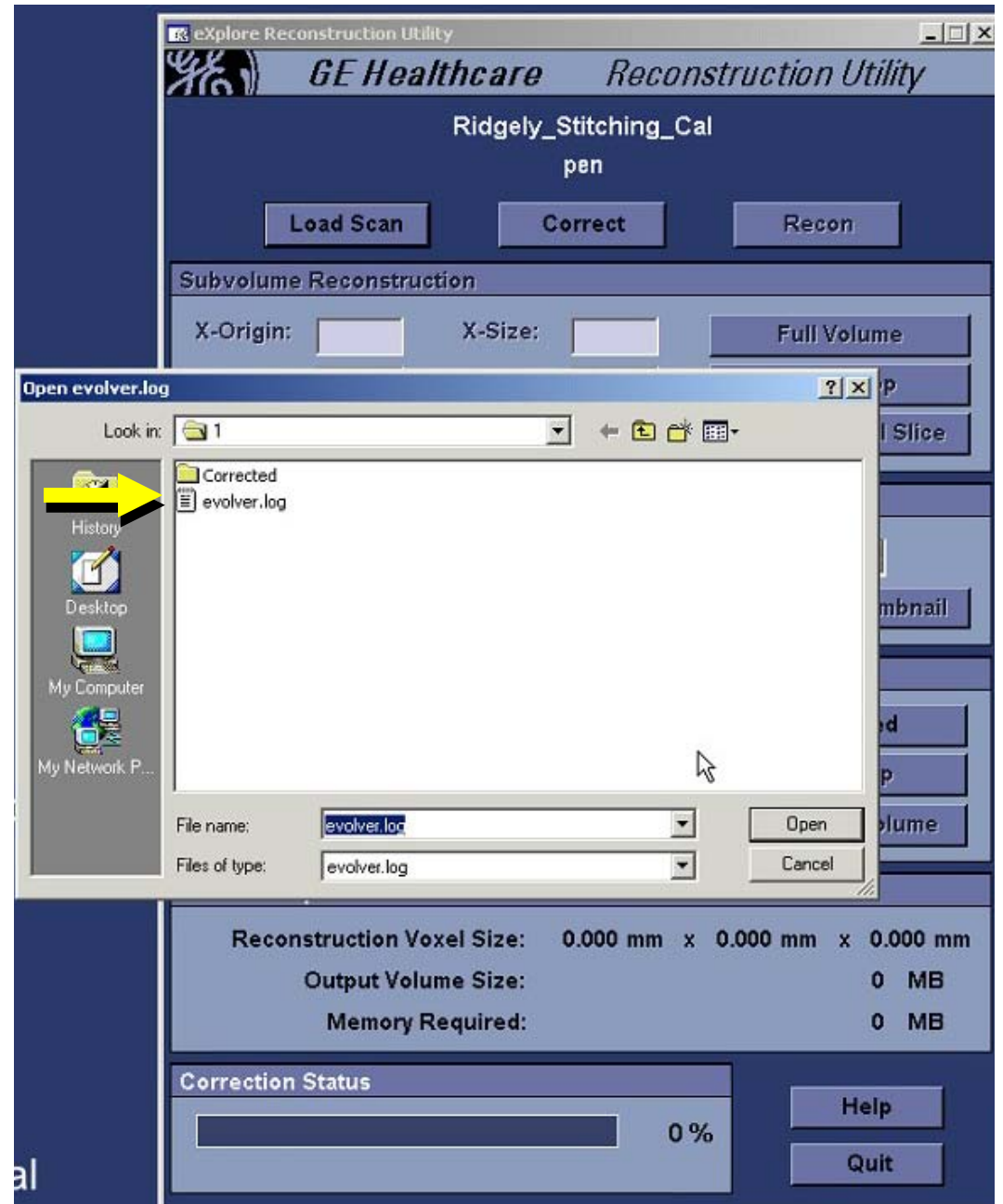
...our "Stitch" data are now ready to be removed from the cluster and to a long-term storage device, such as a USB drive. These drives are now very inexpensive and can store reams of data. If these data need to be revisited in the future, you can copy them back onto the cluster for processing.

Next, we'll cover how to recreate all of the deleted files in the future, once you double click on the EXE file to unpack the winRAR data.

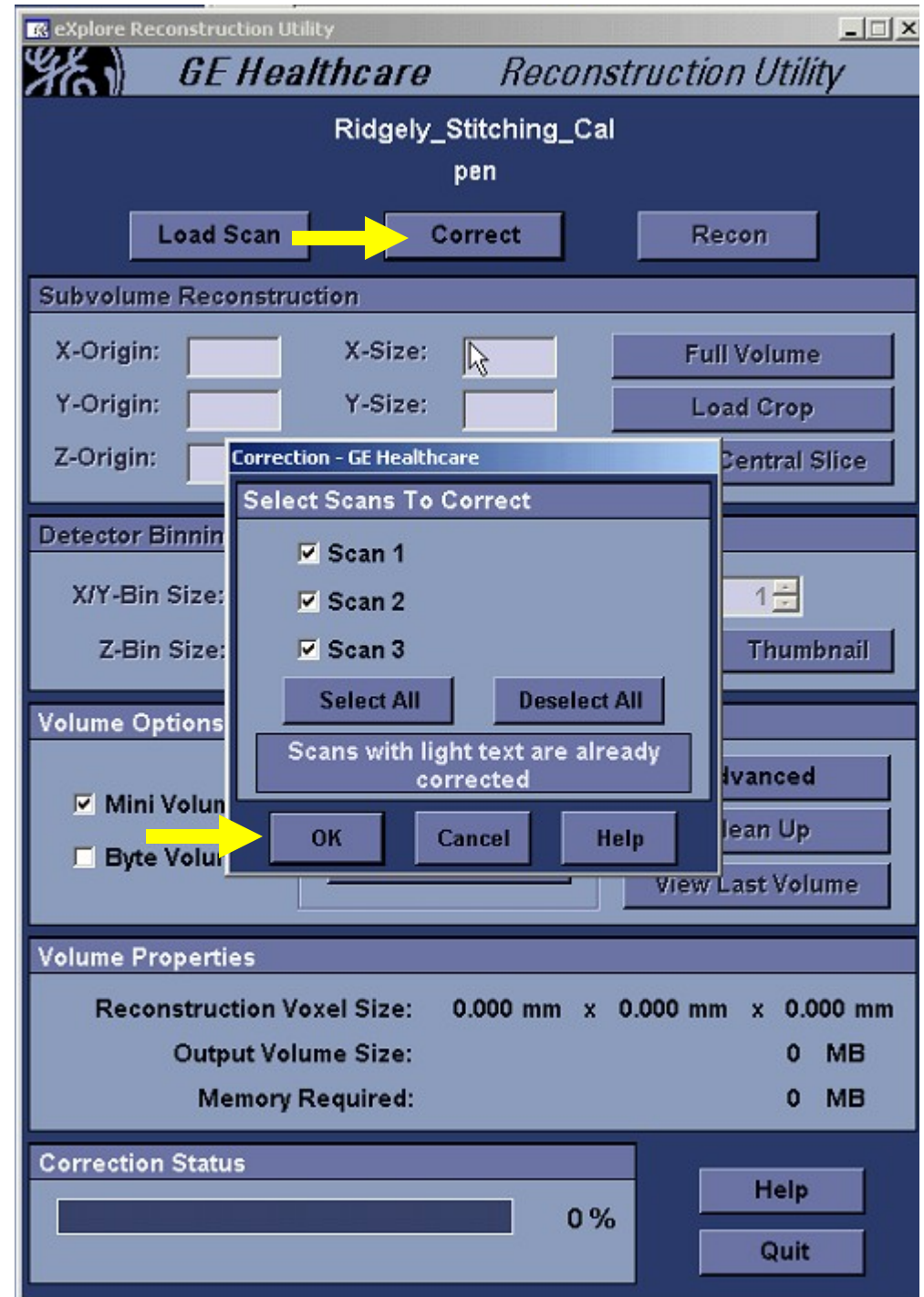
To regenerate new volumes from the raw acquisition files down the road, open the reconstruction utility, and click “Load Scan”...



Load the file, “evolver.log”...



Then click "Correct". If stitching, be sure all scans are selected, and then click "OK"



Click “Thumbnail”, and then “Recon”, and then you’re right back to where you were after you scanned the specimen originally....

