

POS 1	A. M.
POS 2	STANDBY
POS 3	C. W.

BAND SWITCH SELECTOR	
POS 1	550KC-1500KC
POS 2	1.5MC-4.0MC
POS 3	9.0MC-30.0MC

- NOTES:
1. ALL RESISTORS ARE 1/2W, 10% AND ALL CAPACITORS ARE IN MICROFARADS UNLESS OTHERWISE SPECIFIED.
 2. BAND SWITCH SHOULD BE SHOWN AS SHOWN IN EXTREME COUNTERCLOCKWISE POSITION.
 3. FUNCTION SWITCH SHOWN IN A.M. POSITION AS VIEWED FROM KNOB END.

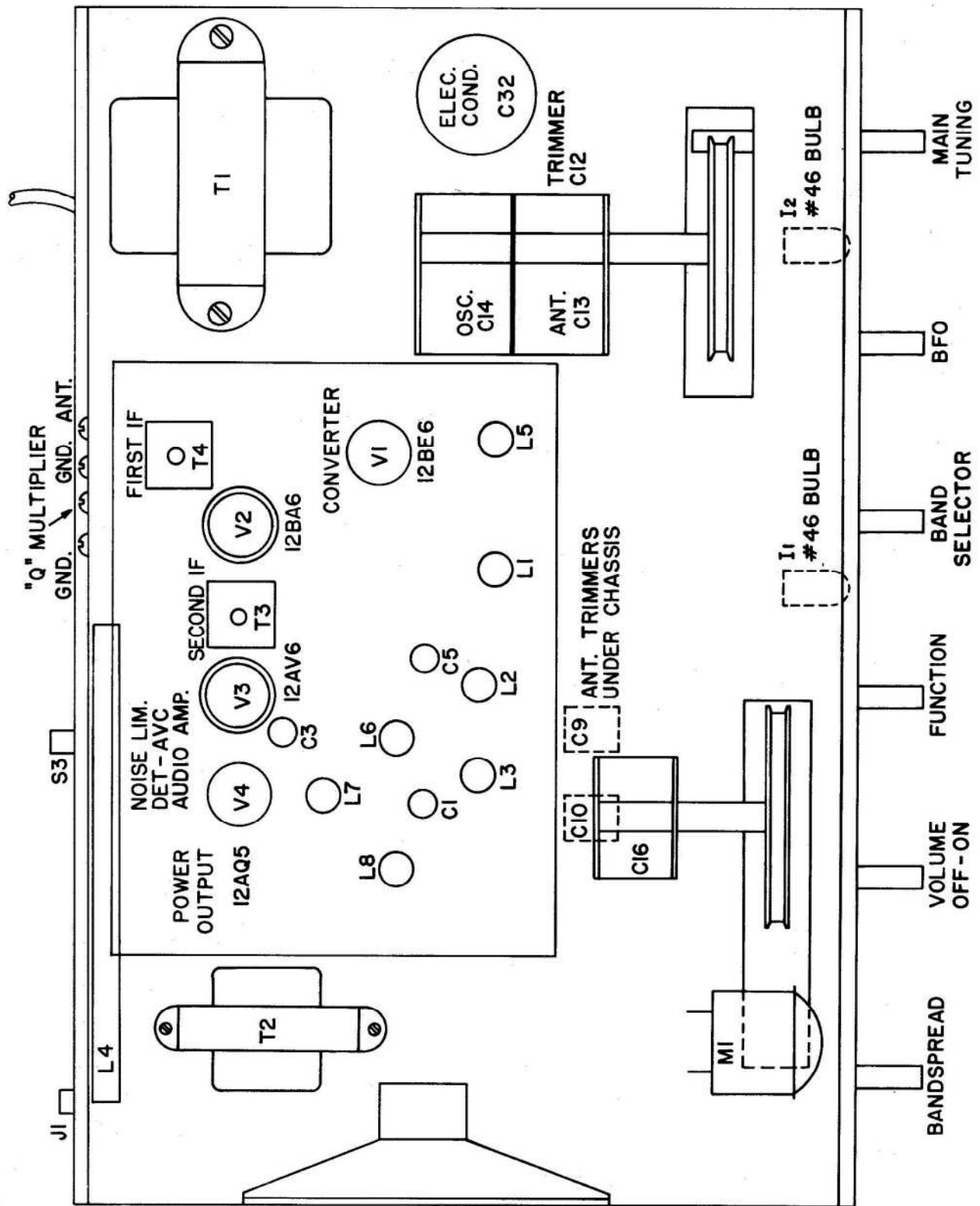


FIGURE 4