

OHIO UNIVERSITY CONFINED SPACE ENTRY INFORMATION

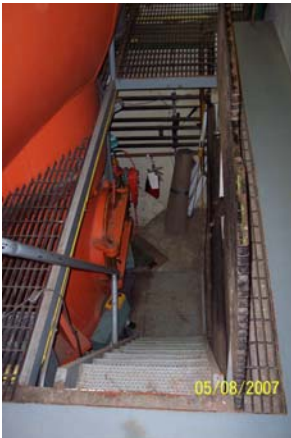
Building: Edwards Accelerator
Location: First Floor
Purpose: Accelerate Ions
Description: Van de Graff Tandem Accelerator
Confined Space Number: 314

Space Characteristics

Holding: Belt, Stainless Steel Ball, Coils
Shape: Multi Cylinder
Portal: 2
Dimensions (ft): 22 x 10 x 17
Portal Dimensions: 5 x 3

Hazards

Mechanical: Belt
LOTO: Yes
Electrical: Yes
Fluid Lines: Water runs through space
Visible Internal Hazards: Configuration
Heat or Cold Stress: No
Physical Hazards: Radiation
Electrical LOTO Possible: Yes
Engulfment Possible: No



Atmospheric Hazards

Carbon Monoxide: No
Explosive Gas: No
Hydrogen Sulfide: No
Oxygen Deficiency: Yes (SF6)

Entry Information:

Reason for Entry: Maintenance
Responsible Department: Physics
Evaluator:
Average # of Entries/Yr: 4-6
Written Department Procedure: Yes
Comments: Voltage can get up to 15,000.

Special Procedures:

LOTO: Manual and electrical LOTO. Gas lines must be locked out. Gas is taken out of the accelerator and moved to a different tank. The accelerator is then vacuumed out and ventilated.
PPE Required: Harnesses are used when entering through the portal on the top. Continuous atmospheric testing is necessary.

