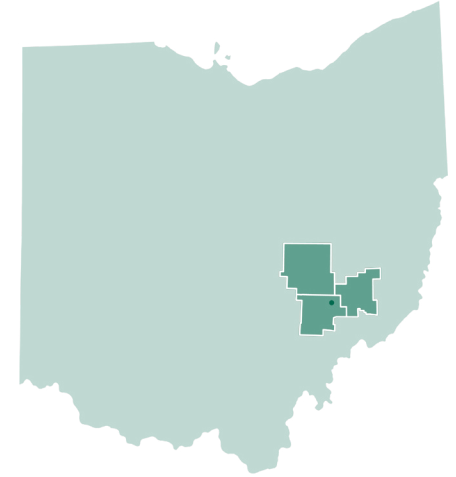


ECONOMIC IMPACTS OF JESSE OWENS STATE PARK



Jesse Owens State Park is a success story in environmental stewardship, conservation, and reclaiming land for outdoor recreation. Located in Morgan County and surrounded by acres of land, it offers boating, camping, fishing, and hunting activities.

- In 2020, Jesse Owens State Park hosted **4,409 visitors**, primarily from Ohio and West Virginia.
- In 2021, Jesse Owens State Park hosted **4,922 visitors**, primarily from Ohio and West Virginia.
- Each year, Jesse Owens State Park on average contributes nearly **\$3.3 million to the regional economy.**
- For every **4 employees at Jesse Owens State Park, 1 additional full-time job is supported** in the regional economy through supply chain effects and the spending of income.
- Almost **\$2.45 million in wages** are paid to workers as a result of Jesse Owens state Park's activity.
- Jesse Owens State Park helps support several jobs in **other key regional industries** such as restaurants, real estate, retail-sporting goods, gasoline and convenience stores, and educational services, among others.

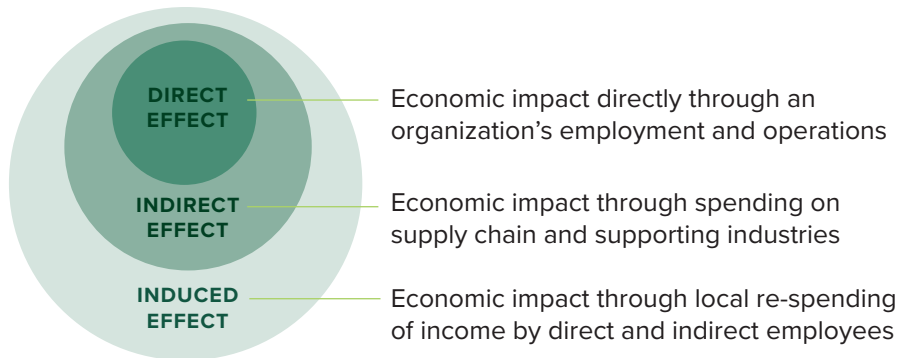


The total economic impact of Jesse Owens State Park in 2020 and 2021 was **\$6,528,397.**



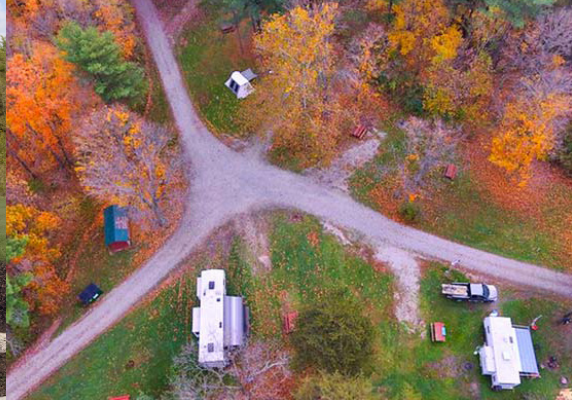
QUICK FACTS

- Located in Morgan County, OH, Jesse Owens State Park is surrounded by thousands of acres of land available for public use.
- Open from 6:00 a.m.–11:00 p.m. daily
- Popular recreational activities include boating, camping, fishing, and hunting.
- The Park offers four no-fee campgrounds that operate on a first-come, first-serve basis.
- Park is adjacent to Jesse Owens Wildlife Area and Appalachian Hills Wildlife Area.



Voinovich School of Leadership and Public Service

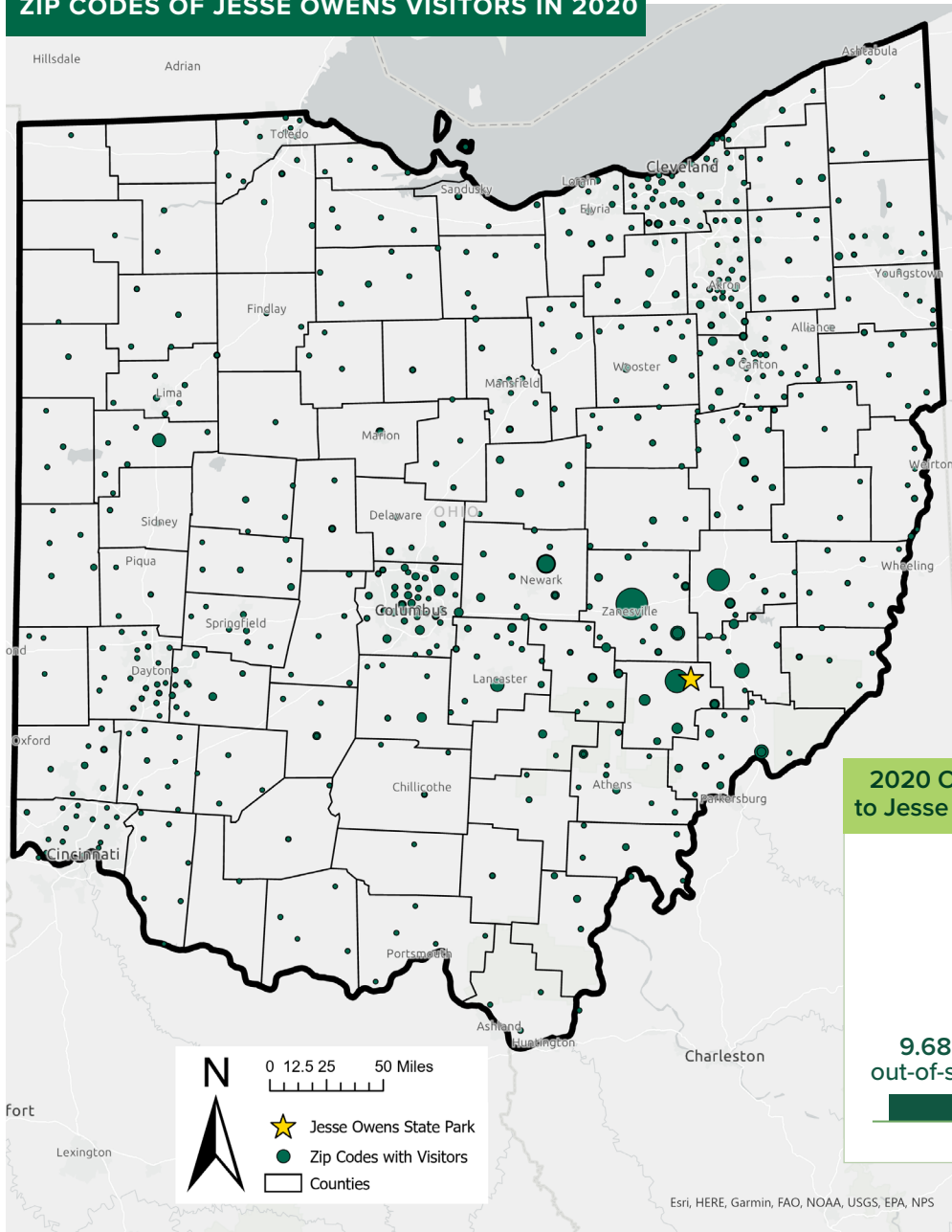
Developed by Elham Erfanian, Ph.D., Eric Belleville, MPA., and Clara Bone, MPA. Ohio University's Voinovich School of Leadership and Public Service. Prepared for Ohio Department of Natural Resources Division of Mineral Resources Management as part of a research grant project.



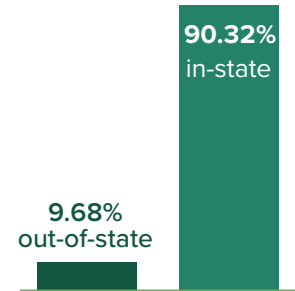
ECONOMIC SUMMARY OF JESSE OWENS STATE PARK (2020 AND 2021)

Impact Type	Employment	Labor Income	Value Added	Economic Impact
Direct Effect	53.13	\$1,828,095	\$2,516,962	\$4,410,299
Indirect Effect	8.21	\$357,818	\$561,525	\$1,237,583
Induced Effect	5.53	\$265,798	\$512,462	\$880,514
Total Effect	66.87	\$2,451,712	\$3,590,949	\$6,528,397

ZIP CODES OF JESSE OWENS VISITORS IN 2020



2020 Overnight Visitors to Jesse Owens State Park

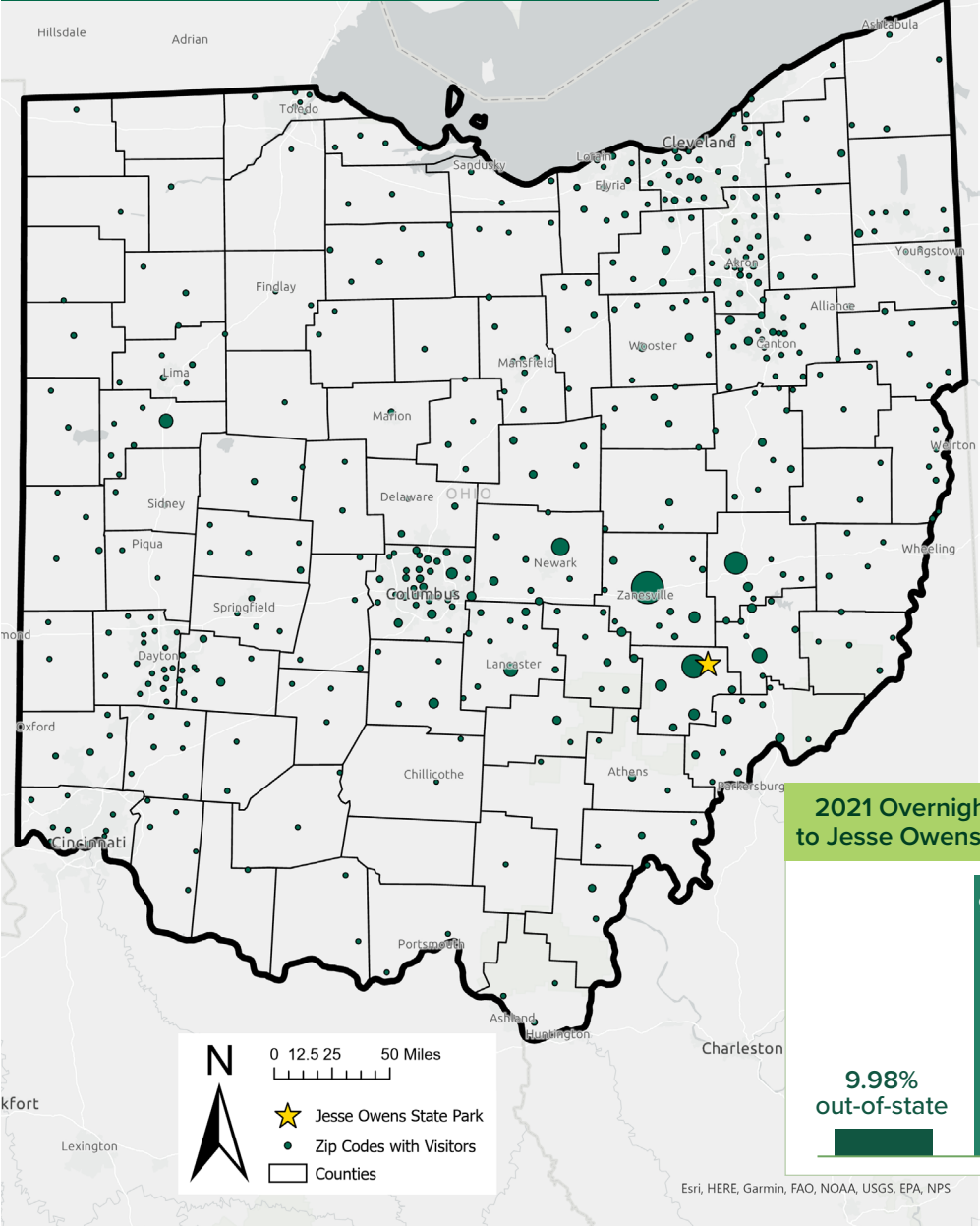




YEARLY ECONOMIC BENEFITS OF JESSE OWENS STATE PARK CAMPSITE IMPROVEMENT

Impact Type	Employment	Labor Income	Value Added	Economic Impact
Direct Effect	6.04	\$243,331	\$312,689	\$510,515
Indirect Effect	0.90	\$39,027	\$59,992	\$129,408
Induced Effect	0.88	\$38,786	\$72,904	\$129,905
Total Effect	7.83	\$321,145	\$445,586	\$767,829

ZIP CODES OF JESSE OWENS VISITORS IN 2021



2021 Overnight Visitors to Jesse Owens State Park

90.02%

in-state

9.98%

out-of-state

Esri, HERE, Garmin, FAO, NOAA, USGS, EPA, NPS