



General Ledger Chart of Accounts: Organization Segment

The Organization identifies who administers the funds, such as a Planning Unit or a department within a Planning Unit.

- **Organization is the lowest level value of University structure.**
- **Planning Units can consist of multiple Departments and Departments can consist of multiple organizations**



Organization Structure

6 digit value defined as:

— —

Planning unit = first 2 digits

- 10 – A&S
- 14 – Engineering
- 25 - HCOM

—

Location = third digit

- 0 – Athens
- 1 – Dublin
- 2 – Cleveland
- 9 – Regionals
- Primarily tracks activities of extension campuses

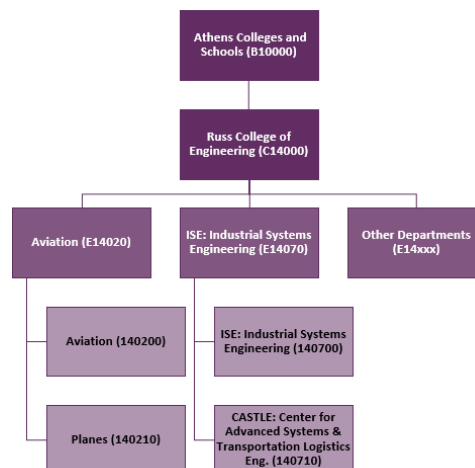
— — —

Department & orgs = last 3 digits

- Numbered and summarized by planning units

Organization Hierarchy Example

- Executive (A & B level) University
- Planning Unit (C Level)
- Extension Campus (D Level) *If applicable*
- Departments (E level)
- Organization values



Organization Segment: Quick Reference Guide

Organization Segment Hierarchy

A10000 PROVOST - ACADEMIC

B10000 ATHENS COLLEGES & SCHOOLS

C10000 ARTS AND SCIENCES
C11000 BUSINESS
C12000 COMMUNICATION
C13000 EDUCATION
C14000 ENGINEERING
C15000 FINE ARTS
C16000 HEALTH SCIENCES
C17000 HONORS TUTORIAL COLLEGE
C18000 OFFICE OF GLOBAL AFFAIRS & INTL STUDIES
C19000 UNIVERSITY COLLEGE
C20000 VOINOVICH

B25000 COLLEGE OF MEDICINE

C25000 COLLEGE OF MEDICINE

B30000 REGIONAL CAMPUSES

C30000 EXEC DEAN REGIONAL CAMPUSES
C31000 EASTERN
C32000 CHILLICOTHE
C33000 SOUTHERN
C34000 LANCASTER
C36000 ZANESVILLE

A50000 PROVOST - ADMINISTRATIVE

B50000 PROVOST - ADMINISTRATIVE

C50000 PROVOST
C51000 INSTRUCTIONAL INNOVATION
C52000 LIBRARY
C53000 VP OF RESEARCH
C54000 ENROLLMENT MANAGEMENT
C59000 INFORMATION TECHNOLOGY

B55000 PROVOST - ACADEMIC SUPPORT UNITS

C55010 WELLWORKS
C55020 WOUB
C55030 KENNEDY MUSEUM
C55040 MARCHING 110
C55050 ATHENA

A60000 PRESIDENT

C60000 PRESIDENT
C61000 VP FOR DIVERSITY & INCLUSION
C62000 LEGAL AFFAIRS
C63000 GOVERNMENT RELATIONS
C64000 INTERNAL AUDIT
C65000 UCM
C66000 ATHLETICS

A70000 VP ADVANCEMENT

C70000 VP OF ADVANCEMENT

A75000 VP STUDENT AFFAIRS

C75000 VP STUDENT AFFAIRS
C76000 HOUSING
C77000 CULINARY SERVICES
C79000 STUDENT ORGANIZATIONS

A80000 VP FINANCE & ADMINISTRATION

C80000 VP OF FINANCE & ADMINISTRATION
C81000 VPFA - AUXILIARIES
C82000 VPFA - FACILITIES
C83000 VPFA - FINANCE
C84000 VPFA - HR

A95000 CENTRAL ACCOUNTING

C95000 CENTRAL ACCOUNTING
C96000 INTERNAL BANK